

## 9<sup>th</sup> Young Surveyors Conference

### ***NEXT-GEN GEOSPATIAL PROFESSIONALS: DRIVING A DIGITALLY ENABLED FUTURE***



#### **LOGISTICS AND REGISTRATIONS NOTE**

9<sup>th</sup> Young Surveyors Conference entitled ***NEXT-GEN GEOSPATIAL PROFESSIONALS: DRIVING A DIGITALLY ENABLED FUTURE*** will be held from 5<sup>th</sup> April 2025 – 6<sup>th</sup> of April 2025 in Brisbane, Australia. The main aim of this document is to provide the relevant information about the registrations and logistics during stay in Brisbane, Australia.

## 1. Visa Information

### Visa Requirements:

All travellers who wish to participate in the conference must have a valid passport. It's a participant's responsibility to secure their visa before travelling to an event. If you need any supporting documents/letters to facilitate your visa application, please reach out to the organising committee via email at .....

**Visa Processing:** Visa processing times may vary. The organising committee highly recommend applying visa early through <https://www.homeaffairs.gov.au/>

To find out about visa processing. Please see <https://immi.homeaffairs.gov.au/visas/getting-a-visa/visa-processing-times>

To find out more about visas . Please see <https://immi.homeaffairs.gov.au/visas/getting-a-visa/visa-finder>

**Note:** To find more information about visas . Please see <https://immi.homeaffairs.gov.au/entering-and-leaving-australia/entering-australia>

## 2. Transportation

### Airport Transfers

- **From Brisbane International Airport:**
  - ❖ **Train:** Trains are available from Brisbane International Airport to Brisbane City. To know more about the train schedules and timing please visit <https://translink.com.au/>
  - ❖ **Taxi:** Taxis are available outside of the Brisbane International Airport. The fare ranges from USD \$ 28 to USD \$ 34.
  - ❖ **Cab App: *Uber*** is a commonly used cab app in Brisbane.

### Public Transportation Around Brisbane City

- **Public bus and Trains:** Public bus is frequently available to travel across the Brisbane city. For more information, please visit <https://translink.com.au/> access via Gocard as per Brisbane public transport guideline.
- **Uber:** Uber are also commonly used means of transportation to travel across the Brisbane city.
- **Ferries:** Ferries are available across the city centre operating on the Brisbane River. Entry via Gocard as per Brisbane public transport guideline.

## 4. Sponsorships

Participants must register through the provided conference link, and their participation is subject to approval by the organizers. Participants traveling to Brisbane from other locations are expected to manage their own visa, transportation, and accommodation arrangements, along with covering any related expenses, unless these are handled by their employers. Please be aware that sponsorship opportunities are limited to select representatives.

## 5. Health and Safety Information:

In case of a health emergency, there are several hospitals and medical services in Brisbane city. The commonly preferred hospital is: Royal Brisbane and Women's Hospital, Princess Alexandra Hospital, Brisbane Private Hospital, The Wesley Hospital, and Mater Hospital Brisbane.

The standard pharmacy is from 7:00 AM to 6:00 PM/8:00/11 PM. Perhaps, there are few available 24 hrs pharmacies too.

For more information, Please see attached

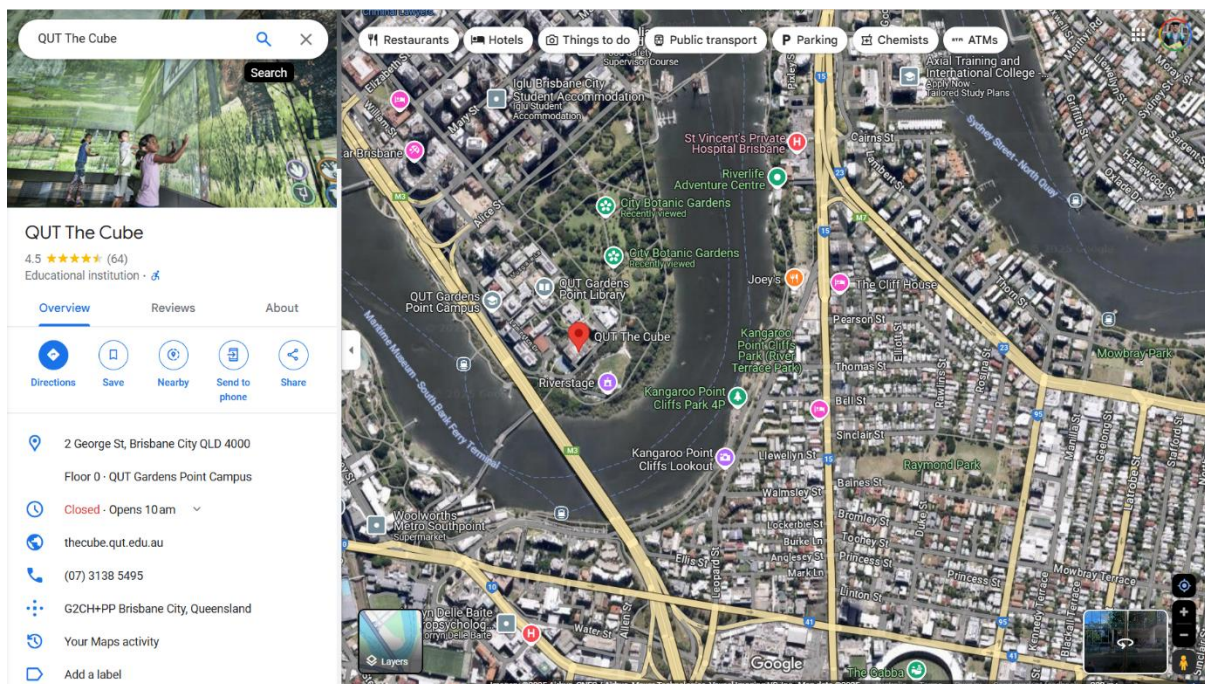
<https://www.healthdirect.gov.au/australian-health-services/search/brisbane-city-4000-qld/pharmacy/310080006>

## 6. Venue:


**Location:** QUT The Cube [Link](#)

**Address:** 2 George St, Brisbane City QLD 4000

### Location map



## 8. Other Details

<b>Emergency Contact Numbers</b>	Triple Zero (000).  For more information, please visit below websites  <a href="https://www.qld.gov.au/emergency/emergencies-services/assistance">https://www.qld.gov.au/emergency/emergencies-services/assistance</a>  <a href="https://www.qld.gov.au/emergency/emergencies-services/response">https://www.qld.gov.au/emergency/emergencies-services/response</a>
<b>Internet Availability</b>	Free Wi-fi will be available around conference locations.
<b>Accommodation</b>	Recommend platform <b>Booking.Com</b>
<b>Weather</b>	Overall, in April Autumn season is in Brisbane. For weather forecast please visit below link  <a href="https://www.weatherzone.com.au/">https://www.weatherzone.com.au/</a>  <a href="http://www.bom.gov.au/?ref=logo">http://www.bom.gov.au/?ref=logo</a>
<b>Time Zone</b>	Australian Eastern Standard Time. Time zone in Brisbane QLD (GMT+10)
<b>Electricity plug</b>	  The standard plug type is Type I.
<b>Official and Conference Language</b>	English
<b>Currency and Credit Cards</b>	The local currency in Australia is Australian Dollar (AUD)  1 USD = 1.59 AUD  There are banks and exchange shops for currency conversion.
<b>Payment methods</b>	Using the credit/debit cards such as visa or Mastercard