

FIG Commission 7 Annual Meeting

Session 1: 20 Oct 2020

**“State-of-Play and Future Directions
in the Land Sector”**



**Land Equity
International**

Land Equity International Pty Limited

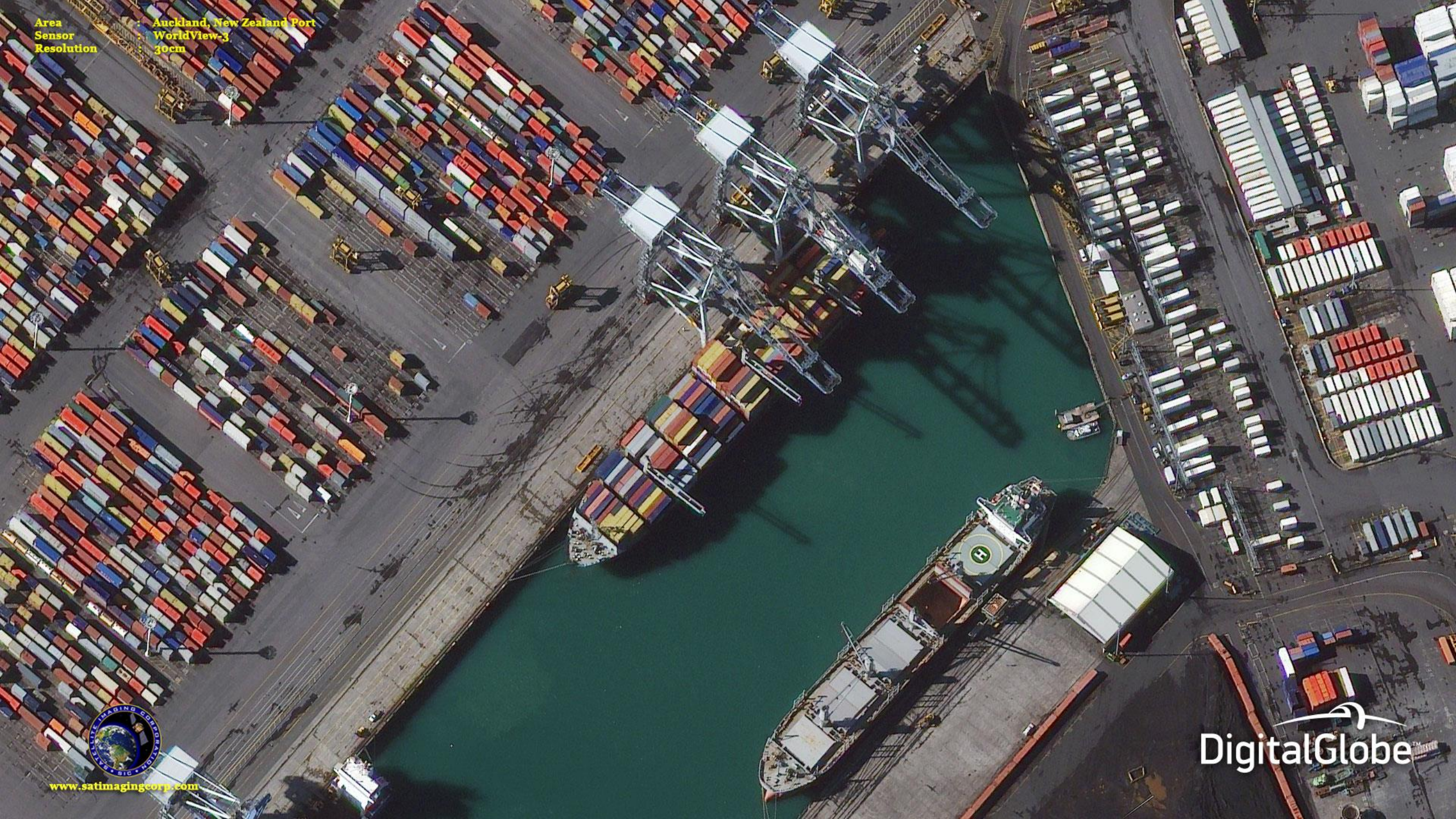
ABN 42 097 054 165

Head Office Suite 10 Kembla Terraces
74 Kembla Street, Wollongong NSW 2500
Postal PO Box 798, Wollongong NSW 2520

P +61 2 4227 6680
E home@landequity.com.au
www.landequity.com.au

Area
Sensor
Resolution

Auckland, New Zealand Port
WorldView-3
30cm



www.satimagingcorp.com

DigitalGlobe



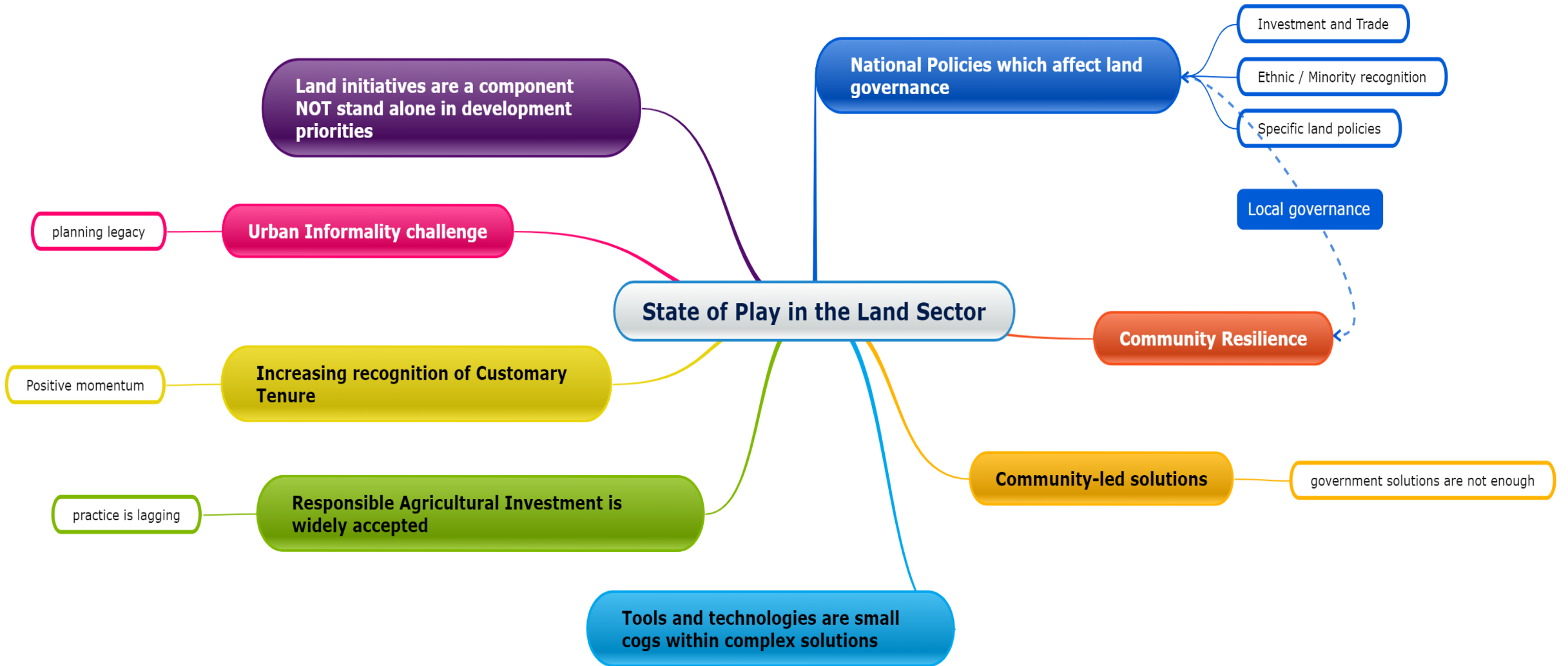
Photo credit: REKAM
Nusantara Foundation



Photo Credit: MRLG project



MAKE GIFS AT GIFSOUP.COM

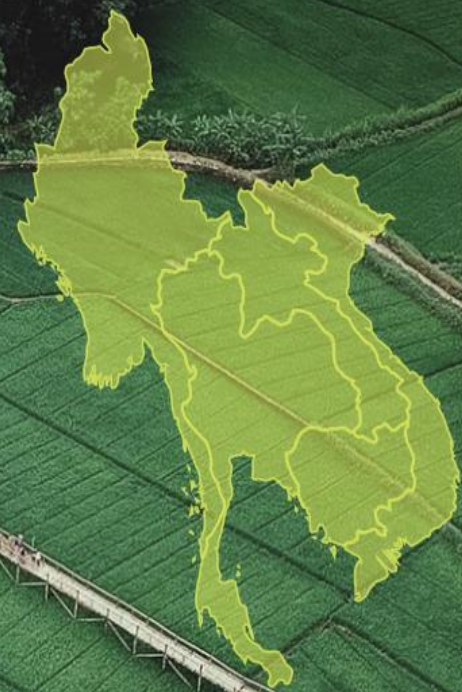


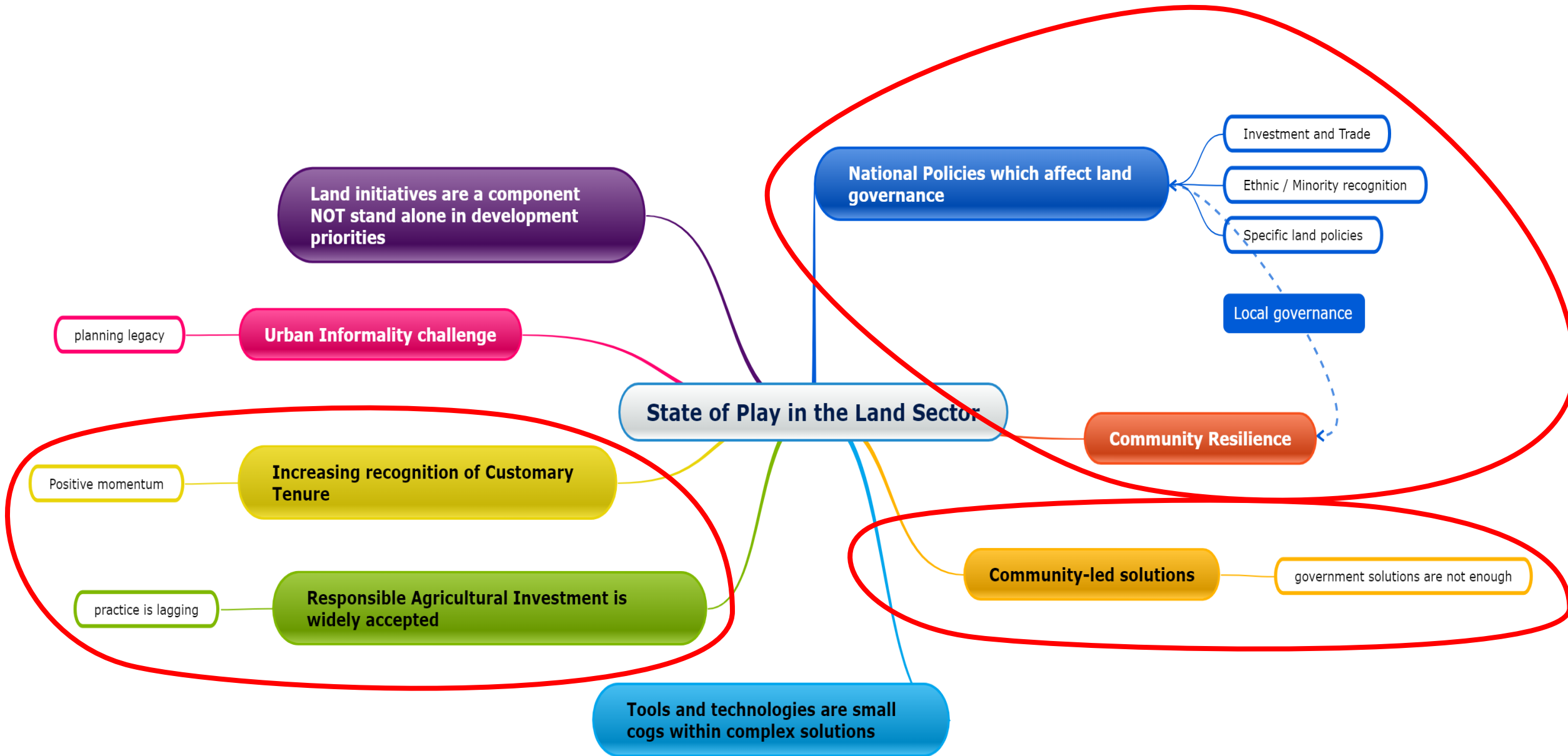


Mekong Region Land Governance Project

MRLG aims to improve land tenure security for smallholder farmers in the Mekong Region.

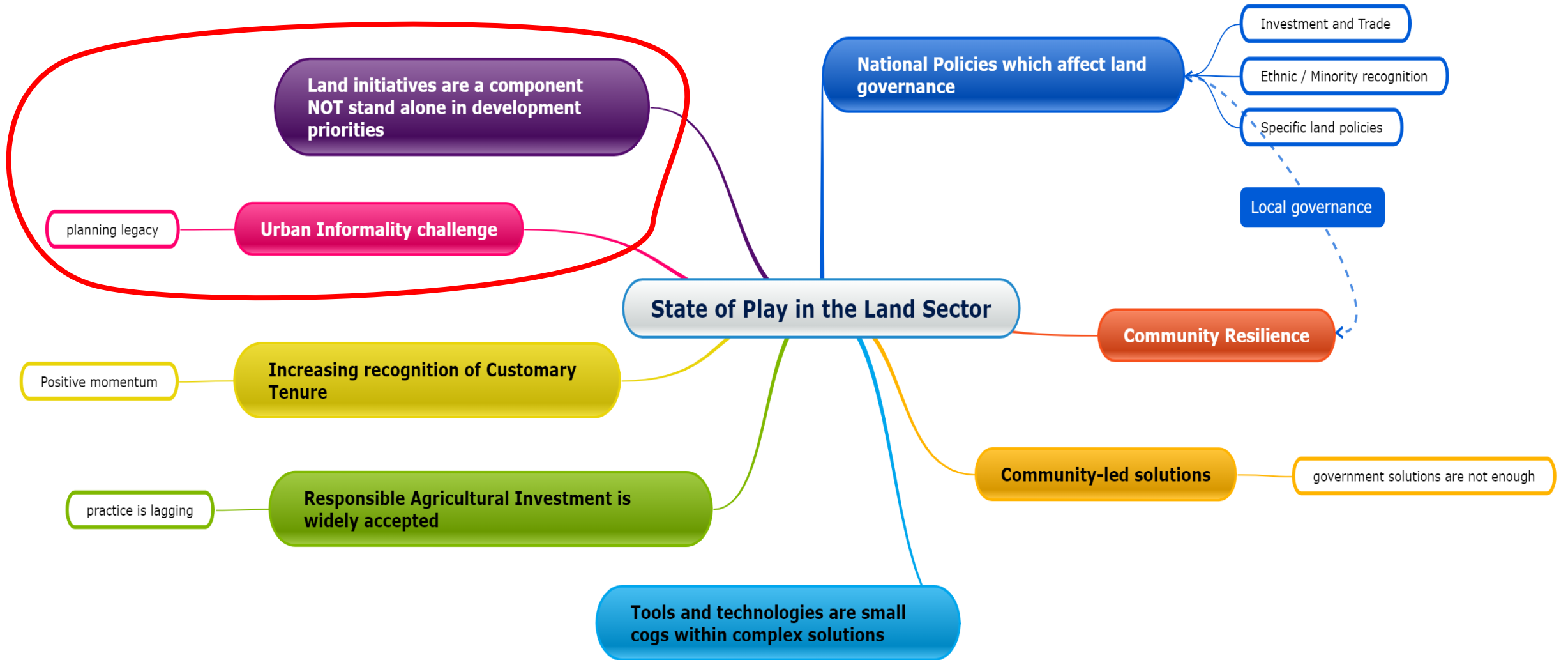
[Learn More >](#)



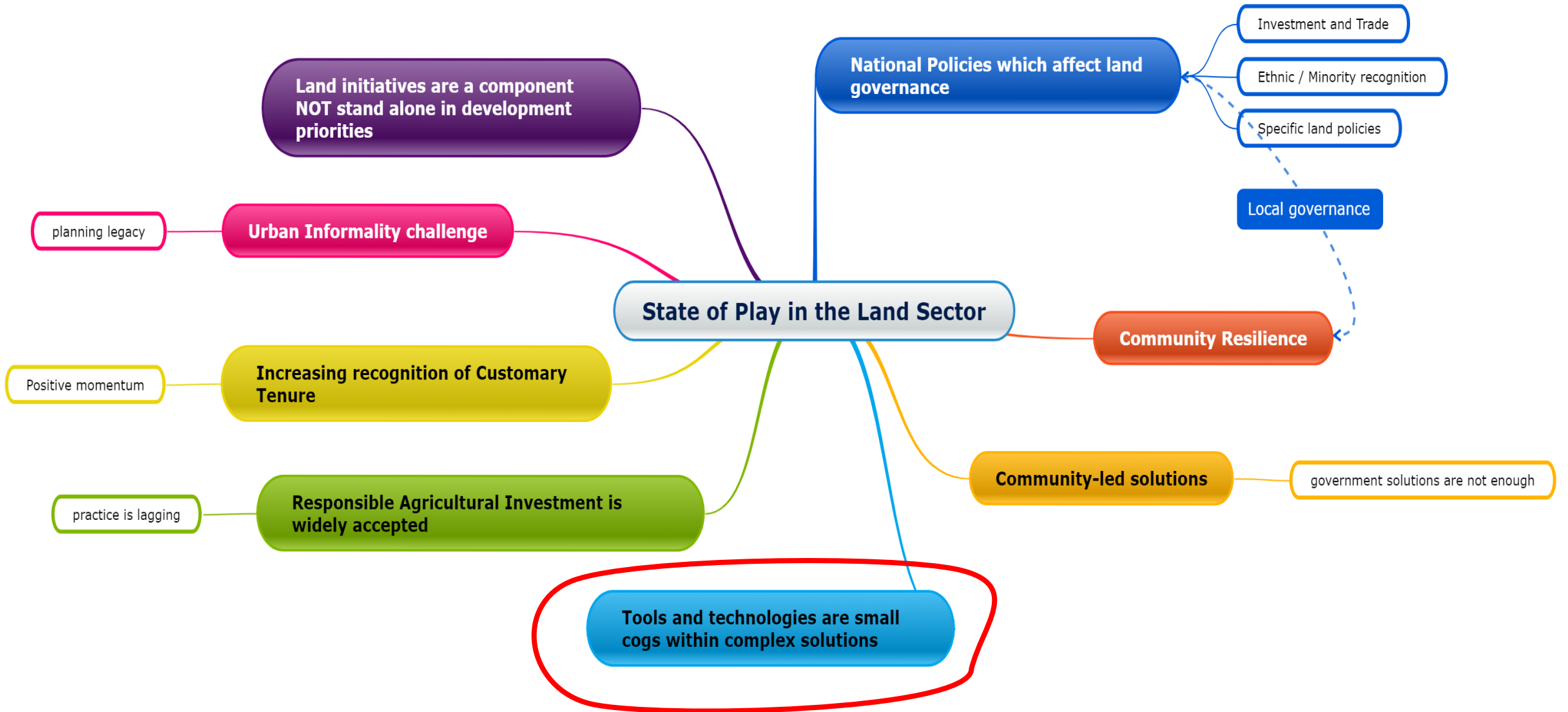




What does Community Resilience look like?





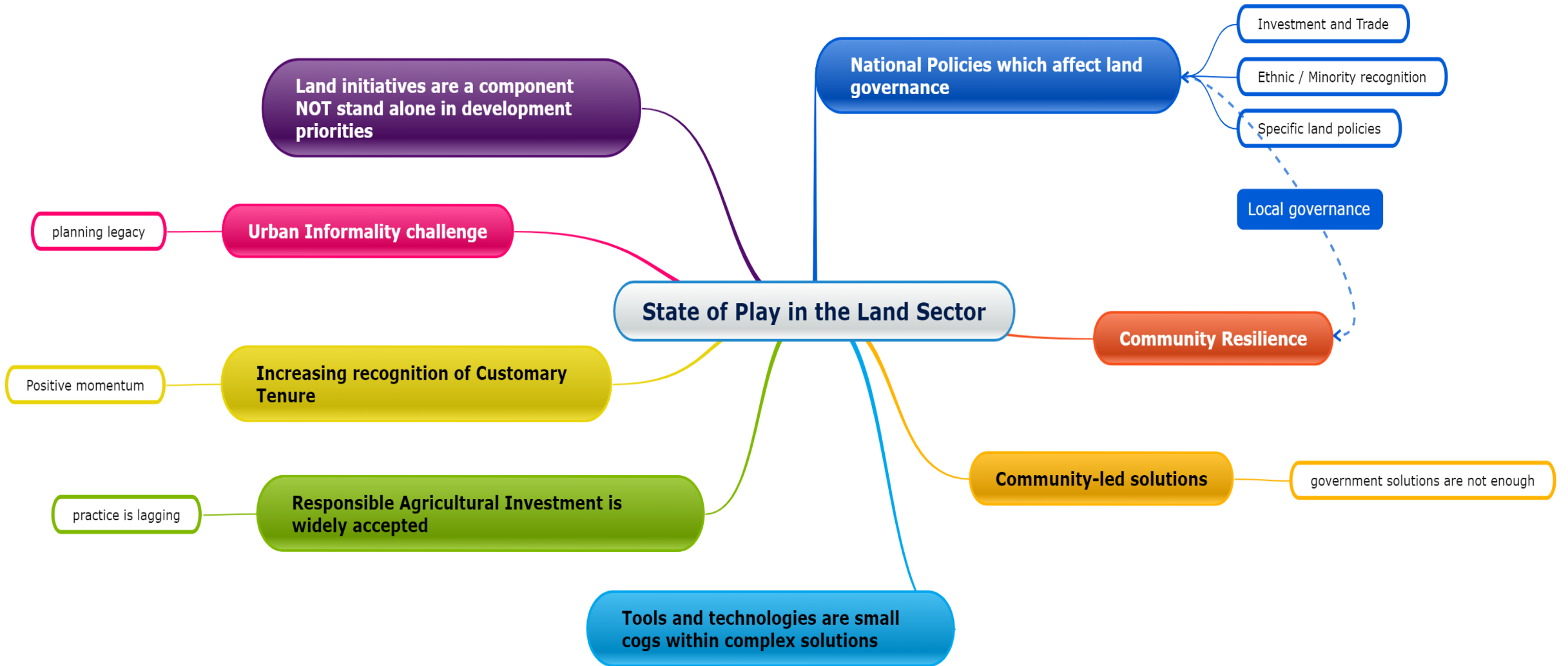


Tools & Technology

Growth of tools & technology are to our benefit:

- Increasing access to cheaper, reliable and recent imagery
- Increasing access to positioning through tablets and mobile devices – not just systems requiring professional expertise
- Understand the limitations of the tool
- Using tools to improve the powerful art of “questioning”





Future Direction

- The global pandemic is forcing a reconsideration towards home-grown solutions.
- When will international financed designs truly acknowledge time and capacity constraints?
- In many countries, informality and land tenure insecurity is a function of outdated mapping, planning, land policies and laws: engaging in this discussion by surveyors is essential.