

FIG WORKING WEEK 2027

Stavanger, Norway

May 21. - 27. 2027 / May 28. - June 3. 2027 / June 4. - 10. 2027



CONTENT

Page index:

- 3 Executive Summary
- 4 Invitation
- 5 Motivation
- 6 Member Associations
- 10 Partner Organisations
- 12 Why Norway
- 13 Why Stavanger
- 15 Stavanger Sport and Convention Centre
- 17 Proposed venues
- 18 Technical visits
- 19 Sustainability
- 20 Travel to/in Stavanger
- 22 Accommodation
- 24 Budget
- 25 List of previous events by members and venue
- 26 Summary related to the general instructions
- 28 Appendix
- 29 Day trips near Stavanger
- 31 Dining in Stavanger
- 32 Room Capacity Stavanger Forum
- 33 Forum Expo - set up catering and expo
- 34 Welcome letter Mayor of Stavanger
- 35 Welcome letter Director of Tourism



Executive Summary

DATES

The proposed dates for FIG Working Week 2027 are optional:

May 21. - 27. 2027

May 28. - June 3. 2027

June 4. - 10. 2027

VENUE

The proposed venue for FIG Working Week 2027 is Stavanger Forum located at Siddis Center / Stavanger Sports and Convention Centre. Siddis Center is one of Norway's largest conference and exhibition centres and is located close to the city centre of Stavanger.

FIG WORKING WEEK BID MANUAL

The guidelines stipulated for bidding to host the FIG Working Week 2027 will be met. The local organising committee will accommodate amendments which may be required prior to 2027.

HOST ASSOCIATIONS

FIG Norway is an umbrella organization for the five Norwegian FIG members.

Member association; TEKNA – Norwegian professionals for the built environment (TEKNA)

Member association; GeoForum

Affiliate member; Norwegian Mapping Authority (NMA)

Academic member; Norwegian University of Life Science (NMBU)

Academic member; Western Norway University of Applied Sciences (HVL)



SUPPORTING PARTNERS

Ministry of Local Government and Regional Development (KDD)

National Geospatial Council

University of Stavanger (UiS)

GRID-Arendal (UNEP Partner)

Geomatikkbedriftene (Association for 26 Geomatics Companies in Norway)

BID ORGANISATION

Steering committee:

Ivar Hebnes, President TEKNA

Terje Midtbø, President GeoForum

Kåre Kyrkjeide, Director International, NMA

Guro Voss Gabrielsen, Deputy Director, KDD

Project committee:

Ivar Maalen Johansen, NMBU

Arve Leiknes, HVL

Steinar Wergeland, NMA

Martin Vestnes Sæter, KDD

Kari Strande, project manager

Michelle Milas, Region Stavanger

Region Stavanger Convention & Visitors Bureau & members/ partners have contributed with layout, destination information and several photos.



INVITATION

Dear FIG Council,

The Norwegian FIG member associations, Norwegian Professionals for the Built Environment (TEKNA) and GeoForum with the affiliated member Norwegian Mapping Authority (NMA) hereby present this bid, for hosting FIG Working Week 2027 in Stavanger, Norway.

FIG Norway wants to host FIG Working Week 2027 to boost the Norwegian geospatial industry, to highlight surveyors' contribution to the Arctic, to Coast and Ocean management, to Climate Change adaptation and to Smart City management. Climate Change, adaptation and preparedness is an important task for Smart City management. There is also important to consider preparedness and security because of Climate Change and conflicts around the world.

Hosting a FIG Working Week will be unifying for the geospatial industry in Norway both for the member associations and in cooperation with FIG Norway, the private geomatics industry and the public authorities. FIG Norway also wants to strengthen and expand the network for Young Surveyors in Norway and bring more young people into the FIG network.

Norway included Spitsbergen (Svalbard) is situated far north and is specially affected by the impact of climate change. Norway, with its economic zones, is dependent on sustainable coast and ocean management. Our geodetic and hydrographic profession contributes with documentation of climate change, ice melting, land uplift at an increased speed especially in the Arctic. The Norwegian Mapping Authority (Kartverket) contribute to the international geodetic reference frame and research network through its surveying antennas at the geodetic Earth observatory at Spitsbergen, Svalbard.

The Norwegian Government launched in 2018 the National geospatial strategy towards 2025 – "Everything happens somewhere". The vision for the strategy is to be at the forefront in the use of geospatial information. The strategy set up four goals to support the vision, which are centred around data content, technology and tools, cooperation, and framework conditions. Norway has an extensive and advanced foundation for access to geospatial information. It covers many needs in society and consists of various shared solutions for the management, distribution, and use of geospatial information. There is a rapid development within geospatial ecosystems and new tools like Digital Twins.

In 2027 some results from the strategy that are relevant for the chosen themes can be demonstrated together with examples from other organisations and countries to discuss, exchange knowledge and learn from each other for future development.

We hope the theme suggested will be of interest and want to work closely with FIG office to prepare for a good Working Week in 2027.

Ivar Hebnes. President Norwegian Professionals for the Built Environment (TEKNA)
Terje Midtbø. President GeoForum
Johnny Welle. Director General Norwegian Mapping Authority





MOTIVATION

Photo: Region Stavanger / Grim Berge

FIG Norway expects the Working Week to inspire and facilitate increased international cooperation and network within the geospatial industry in Norway, both in the member associations and the profession. The goal is to encourage both the professionals and the students in our profession to be able to exchange experience in a broader international network and increased engagement for our delegates to the various commissions in FIG.

FIG Norway and its partners expect that visitors to the FIG Working Week 2027 will have a good time in the Stavanger Region and learn from the themes presented. We hope municipalities, agencies and companies in the Stavanger region will get a better understanding of the importance of geographic information and be inspired from some of the presentations.

Membership in FIG gives access to a large network and the possibility to participate in projects through commissions and working groups. The academic members underline benefit from lectures at events, access to publications that can be used as literature in courses at the universities, publication channel for research results. The network is also important for organising study tours for students and staff, and gives opportunity to join with collaboration partners through international education networks like Erasmus. The motivation from FIG network gives FIG Norway inspiration to organise a working week in Norway so the network can be known and shared wider in Norway.

FIG Working Week 2027 and the ambition to make this a sustainable event will in many ways be a pilot-project for the Stavanger Region Convention Bureau for testing new ideas such as measuring the carbon footprint in the menus. The experiences from this event will be used to further create a white paper for sustainable events for partners and venues in Stavanger and Norway.

FIG Norway and its network welcomes FIG Working Week 2027 to Norway.

MEMBER ASSOCIATIONS

FIG Norway is an umbrella organisation for the five Norwegian FIG members:

- TEKNA – Norwegian Professionals for the Built Environment (TEKNA)
- GeoForum
- Norwegian Mapping Authority (NMA)
- Norwegian University of Life Science (NMBU)
- Western Norway University of Applied Sciences (HVL)

FIG Norway is also a network for the Norwegian delegates for sharing information from their commissions and their contribution and experiences from various workshops, task forces and publications. For several congresses FIG Norway published a Norway Mapping report that demonstrated the international cooperation and development in the Norwegian geospatial industry. Now FIG Norway is looking into establishing a Young Surveyors network under the FIG Norway Umbrella. GeoForum and TEKNA also share information and encourage to broader international participation through its publications and websites.

The Geomatics Industry is highly represented in both TEKNA and GeoForum and will take part in the further preparations for a potential FIG Working Week in Norway 2027.



TEKNA - NORWEGIAN PROFESSIONALS FOR THE BUILT ENVIRONMENT (TEKNA)

TEKNA – Norwegian Professionals for the Built Environment (TEKNA) covers the field of geomatics, land use planning, maps, surveying, land administration, etc and has about 2500 members. TEKNA works to influence the authorities and various institutions to develop a professional network. TEKNA has been member of FIG since 1969 with delegates both in the General Assembly and in various commissions. TEKNA organises several conferences, seminars and workshops every year within real estate and spatial planning. The publication Map and Plan is a scientific publication, and is distributed to the members of TEKNA and GeoForum four times a year. International cooperation is an important and prioritised task to develop expertise and competence. Our member Helge Onsrud was appointed honorary member of FIG in 2010. TEKNA organised a Commission 7 workshop in Bergen, Norway in 2018 in cooperation with Western Norway University of Applied Sciences. TEKNA has been active in Nordic cooperation since 1920 and is now active member of the following international organisations:

International Federation of Surveyors (FIG)
The Council of European Geodetic Surveyors (CLGE)
Nordic Council for Surveyors

GEOFORUM

GeoForum is an organisation for individuals as well as public institutions and private companies that have interest in surveying and spatial information. It covers the field of geomatics, geospatial information, surveying, hydrography, photogrammetry, real estate and land use planning. GeoForum has been member of FIG since 1968 and with delegates to the General Assembly and in various commissions. GeoForum have almost 2000 members spread all over Norway, approx. 150 in the Stavanger region. There are 15 regional branches and five commissions within the organisation. GeoForum organises every year several seminars, workshops, and conferences both at national and regional level. At national level it is annually conferences like “Geodetic and Hydrographic Days”, “The Smart Technology” and “Geomatic conference” with from 350 up to 450 participants onsite. The publication "Position" is distributed four times a year to all members of both GeoForum and Tekna. GeoForum is a member the following international organisations:

International Federation of Surveyors (FIG)
International Cartographic Association (ICA) GeoForums president Terje Midtbø VP in ICA.
International Society for Photogrammetry and Remote Sensing (ISPRS)
Nettverket GI Norden





Photo: Kartverket / Synne Storvik

NORWEGIAN MAPPING AUTHORITY (NMA)

The Norwegian Mapping Authority, Kartverket, is an affiliate member of FIG and have participated at FIG events at a regular basis also including the Director General Forum. NMA has an extensive remit that encompasses both land and sea. NMA collect and manage detailed public geographical information for Norway, from the highest mountain to the deepest ocean floor. The mapping authority facilitate access through the national spatial data infrastructure, and is responsible for implementing the National Geospatial Strategy. NMA is also the national registry for properties and the cadastre. NMA is responsible for the Geodetic Earth Observatory in Ny-Ålesund on Svalbard as the northernmost facility of its kind. NMA represents Norway in the UN-GGIM Subcommittee on Geodesy and have had a key part from 2014 in the preparation for the UN General Assembly resolution on a “Global Geodetic Reference Frame for sustainable development’ (A/RES/69/266), the first resolution recognising the importance of a globally coordinated approach to geodesy. NMA contributes to development cooperation through projects related to mapping, property registration, cadastre, hydrographic infrastructure, and capacity building.

NMA organises seminars, webinars and conferences for municipalities, private companies, and others in the geomatic and land registry profession.

WESTERN NORWAY UNIVERSITY OF APPLIED SCIENCES (HVL)

HVL has been an academic member of FIG for many years. The study programs at the University are corresponding to many of the commissions of FIG. The network and commissions are a good fit for study programs in Land Surveying, Civil Engineering and Land Management. HVL describe FIG as the most interesting international network. Many students at HVL have attended previous FIG-events. In the Congress in Sydney in 2010 12 students participated, and one of the students gave a presentation. Several students have been active in Young Surveyors Network. This is good experience for the students and the network they establish will last for years. In 2018 our university organised Commission 7 meeting in Bergen in collaboration with Norwegian professionals for the built environment with approximately 100 participants. The meeting was a success with high quality on the presentations and discussions.



THE NORWEGIAN UNIVERSITY OF LIFE SCIENCE (NMBU)

NMBU is an academic member of FIG and employees at the university have been national delegates of Norway, and has participated in the work of FIG Norway for many years. The university have study programs corresponding directly to many of the commissions of FIG, including Cadastre, Land Management, Spatial Planning, Valuation, Land Surveying and Positioning.

The membership in FIG has contributed to international connections for both education and research. The efforts to inspire and motivate students to an academic world were successful this year, and four students were rewarded with the navXperience price at the FIG Congress in Warsaw. NMBU hope this will be an extra motivation for both employees and students for the future, especially to be active in the process ahead of a possible Working Week in Norway in 2027.





PARTNER ORGANISATIONS

FIG Norway have support from several Universities, from the private Geomatics Industry as well as from several Governmental Institutions. The Norwegian Geospatial Council highly support a bid for FIG Working Week. Stavanger City by its Mayor welcomes FIG to Stavanger, and they also participate with some funding through Region Stavanger that will support in the preparation for the Working Week in Orlando as well as to the Working Week in 2027.

MINISTRY OF LOCAL GOVERNMENT AND REGIONAL DEVELOPEMENT

The Ministry of Local Government and Regional Development is responsible for the policy on geospatial information and framework conditions, and the national geospatial strategy towards 2025 “Everything happens somewhere”. The ministry is also responsible for the Norwegian Mapping Authority (Kartverket). The ministry supports the bid for hosting FIG Working Week 2027 in Stavanger, and expect that a Working Week will strengthen and boost the Norwegian geospatial and geomatics community and international network opportunities.

NATIONAL GEOSPATIAL COUNCIL

The National Geospatial Council is appointed by the Government to strengthen the cooperation in society on the Geospatial Infrastructure. The Council gives advices to the Government on core solutions and funding of the geospatial infrastructure and for following up on the national strategies like the Geospatial Strategy and the Digitalisation strategy. Members of the Council represent both public authorities, private organisations and associations. The Council supports the Norwegian application for FIG Working Week 2027.

GEOMATIKKBEDRIFTENE

Geomatikkbedriftene is an association that woks to improve the framework conditions for the private sector of the geomatics industry with focusing on surveying and data capture, map production and other value-added services, GIS systems and counselling. The association has 27 member companies with more than 1000 employees in the field of surveying and geomatics. The association’s purpose is to safeguard the members’ business policy in addition to professional coordination.

Geomatikkbedriftene has appointed a contact person that can join the local organising committee for a FIG Working Week. Several of the companies in the association support the bid and will use their network for promotion of the FIG Working Week and will participate both in the conference and in the exhibition.

GRID-ARENDAL

GRID-Arendal is a non-profit environmental communications centre based in Norway. The centre work closely with UN-agencies, regional organisations, national governments, and other strategic partners to create positive environmental outcomes and impact. GRID-Arendal transform environmental data into innovative, science-based information products and provide capacity-build-ing services that enable better environmental governance. The work of GRID-Arendal is organised into several programmes, and the programmes “Polar and Climate” and “Marine Environment” would be of interest for a FIG Working Week in Norway.



Photo: Stavanger Business Region

UNIVERSITY OF STAVANGER (UIS)

The University of Stavanger (UiS) has an innovative and international profile and constitutes a driving force in the development of knowledge and change processes in society. Priority areas are green transition, energy, health and welfare. There are 12000 students, 1900 staff and 415 PhD candidates. There are several Ph.D programs in subjects like Energy technology and geosciences, offshore technology, risk, preparedness and civil protection, informatics, technology and nature science. UiS highly support a bid for FIG Working Week 2027 and will contribute in various ways with the event.

NORDIC EDGE

Nordic Edge is a non-profit organization working in close cooperation with private companies, municipalities, academia and citizens towards smarter and more sustainable cities and communities. Nordic Edge aims to be a driving force for the development, testing and export of smart city technology and sustainable solutions on behalf of the Nordic Edge cluster members. Every second year, Nordic Edge hosts the Nordic Edge Expo & Conference, an arena where business, politics and academia come together to find and present scalable solutions for tomorrow's challenges. The Expo is the leading Nordic event for future cities and communities, enabling action towards UN's Sustainable development goals.

REGION STAVANGER CONVENTION & VISITORS BUREAU (RSCVB)

Region Stavanger is acquainted with the stringent requirements involved in organizing international conventions for highly demanding, international delegates and partners. The ONS conference organised every second year has about 60.000 visitors. Nothing is left to chance to guarantee that the event will be successful. The convention bureau participates in the project group for the bid and will further assist and provide FIG with the following:

- Funding assistance, promotion and support including 1 – 2 representatives to Orlando
- Suggestions for social programme and CSR activities during the congress
- Funding and co-ordination of site-visits and inspections as needed
- Destination promotion prior at the Working Week 1 year prior to the Working Week 2027
- Relevant city promotional material for delegates
- Assistance both before and during the conference
- Supporting FIG and the organizing committee in finding the best solutions for FIG Working Week 2027 to enhance the legacy for FIG, the hosting partners and the destination.

THE CITY OF STAVANGER

The bid to host the FIG Working Week 2027 is strongly supported by the City of Stavanger. We expect to receive funding from the city and we will apply for the Mayor of Stavanger to host a reception for the FIG President, Council, Administration and the wider leadership within FIG together with heads of the delegations, representatives of FIG institutional partners and sister organisations in the Kings Residence "Ledaal". The City of Stavanger will also be involved in enhancing the legacy of FIG Working Week 2027 and will be invited to join a legacy group focusing on recruitment possibilities and positive social impacts from FIG Working Week 2027.



WHY NORWAY?

The Kingdom of Norway is a very long and very narrow country situated far to the north in the north-western corner of Europe. The distance from south to north, equals that from Oslo to Rome (1 770 km), crossing the Polar Circle at about 2/3 of the length. Norway boasts one of the longest coastlines in the world (19 950 km), and the sea governed by Norway covers 6 times of the main land area. Norway has evolved from a quiet agrarian society to a dynamic, high-tech country with a prominent international position. In addition to being one of the largest oil exporters, it is also regarded as being amongst the leaders in a wide range of industries including shipping, aquaculture, hydropower, energy, and telecommunications. The Norwegian business sector works to develop cost-effective, environmentally-sound and technologically advanced solutions, to increase industrial productivity and enhance efficiency - pioneering sustainability being the major theme for their vision.

Norway is in frontline in many geospatial aspects and there is a unique cooperation between all Norwegian municipalities, County authorities and state authorities in Norway Digital within standardisation, data capture, management, and distribution across administrative levels. More than 35 years ago, Norway defined a core national standard in the geospatial area. This also led to Norwegian chair of ISOTC211 for more than 20 years.

BLUE OCEAN

With the long coast and large sea area Norway has a history of use and management of the coast and sea. To take advantage and develop the blue economy, such as navigation, fishing and aquaculture, oil exploitation and tourism, surveying and spatial information is necessary. UN Ocean Decade 2021- 2030 highlights the importance of knowledge and research. The Norwegian Mareano program and Marine coastal base map is of great importance to a sustainable management of the resources at sea and are based on a broad cross sector cooperation. MAREANO maps depth and topography, sediment composition, biodiversity, habitats and biotopes, and pollution in the seabed in Norwegian offshore areas. Ocean surveying and Electronic Chart production is managed from Stavanger as one of three distribution centres for electronic navigational charts.

SURVEYING THE ARCTIC

Situated so far north, Norway participates in several circumpolar programmes. Survey the Arctic is fundamental to sustainable development. Arctic Spatial Data Infrastructure is important to establish basemaps and is the foundation for further development and management in the Arctic regions. With the Geodetic Earth Observatory in Ny-Ålesund on Svalbard, Norway forms a part of a global network for observation and research. Human-induced planetary warming is causing changes in the Arctic that are happening faster than anywhere else on our planet. GRID-Arendal participates in several observation programmes that is based on optimal use of geospatial information in the Arctic region.



Photo: Kartverket / Bjørn-Owe Holmberg



WHY STAVANGER?

The proposed city is Stavanger; located in the southwestern coast of Norway, in the Fjord Norway region, offering some of the most majestic and spectacular sceneries in the world. Surrounded by mountains, beaches and ocean, the city is truly a unique destination for meetings, events, and conferences. Stavanger's intimate and mostly pedestrian city centre, with its old town and medieval harbour makes for a charming atmosphere.

Stavanger is Norway's third-largest city region and the energy capital of Europe, leading the development within this industry for over 50 years. Stavanger is home to the largest energy companies in Norway, as well as over 400 service and technology companies. Over the last couple of years Stavanger has also seen an increase in companies within renewable and green energy. Companies with drive, knowledge and technology are contributing to the transition from the oil and gas industry to renewable solutions.

Stavanger municipality is also one of the pilot surveying areas for Marine base maps in the Coastal Zone in Norway. Through developing marine base maps in the coastal zone, the project partners NMA, the Geological Survey of Norway (NGU) and Institute of Marine Research (HI) see a potential of a knowledge base for sustainable development of Norwegian coastal communities.

SMART CITY

The City of Stavanger also makes its mark as a smart city. The city was selected to be a Lighthouse city in the Triangulum EU project in 2014, which gave positive ripple effects. In 2022, Stavanger was also declared one of the Lighthouse cities within the EU project New European Bauhaus. This means that for the next four years from 2022, the city and 15 private and public partners will work with societal innovative solutions to make the city climate-neutral with inclusion, aesthetics and sustainability. The city is also part of the EU Cities Mission to create 100 climate-neutral cities by 2030.

The Stavanger region is in the forefront of Smart Cities development and host the Nordic Edge Expo that is a major conference in the Nordic Countries. Stavanger is also the energy capital of Norway with the location of several multinational and national energy companies and plays a key part in the transition to and adaption of new and green energy sources.

The City of Stavanger is one of the country's top cities in agriculture and aquaculture, which naturally gives the local restaurants a great advantage. By using local, raw ingredients, they have received great reviews from both national and international food critiques, as well as the Michelin guide.

Over the past 30 years, Stavanger has acquired a strong reputation for hosting a variety of international events. A dynamic university, a university hospital, and various international research centres make the Stavanger region a competent and interesting host for conferences and exhibitions.

FACILITIES & INFRASTRUCTURE

The region of Stavanger has the capacity to host large events. We proudly present 35 hotels and 3000 rooms in the city centre, and a total of 5200 rooms within a 15 km radius. Stavanger Forum has top modern conference facilities and is within walking distance of the city centre. Stavanger Forum has 25 meeting rooms, 15 000 m² of exhibition space and plenary for up to 4000 people.

PRICE LEVEL IN STAVANGER

The best attractions in Norway are completely for free! Nature attractions, outdoor activities and national parks won't charge you a penny, and they are always open. The public transportation pass gets you to your preferred destination at a cost of 30 euros per week or 8,50 euros for a 24 h ticket. In the city, you'll find that entry fees to museums and other attractions are comparable to other places in the world. For example, entry to the Norwegian Petroleum Museum costs 15 / 7,5 euros and the breathtaking 3-hour fjord cruise in Lysefjorden cost 60 euros.

When it comes to the cost of meals in Norway, food and wine in restaurants may be more expensive than other European cities. Stavanger has a wide selection of restaurants serving everything from local cuisine with freshly cooked food from local sourced product to international chain food restaurant that offer low budget alternatives. Prices ranging from an average 10 euros for a lunch and from 20 euros for a dinner at mid-range restaurants.



Photo: Siddis Center / Jan Inge Haga



Photo: Siddis Center / Tommy Ellingsen



SIDDIS CENTER

STAVANGER SPORT AND CONVENTION CENTER

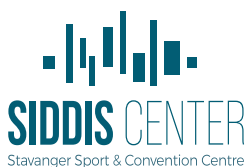
Welcome to Siddis Center - one of Norway's largest facilities for conferences, sports, trade fairs and events. Siddis Center in Stavanger offers everything you need for your next event to be a success. Conference halls for up to 4000 people. more than 30 000 square meters of exhibition space and accommodation for more than 1000 guests. Close to Siddis Center you will find lakes, shopping centres, routes for walking and Stavanger Art Gallery.

For more information:

[Interactive map Mazemap](#)

[Website](#)

[Floorplans](#)



STAVANGER FORUM

Stavanger Forum conference center is one of the main venues at Siddis Center and contains a large plenary hall, a mingle area and 25 meeting rooms in various sizes, in addition to the exhibition hall Forum Expo. The hall has an exhibition area of 4682 m² as well as four meeting rooms, making it suitable for most large scale events.

PLENARY SESSIONS

The scientific program will be arranged in the Stavanger Forum Conference Centre. The plenary sessions and the opening and closing ceremony will take place in Imi Forum, the largest auditorium within the conference centre, which can seat up to 1700 people in theatre style.

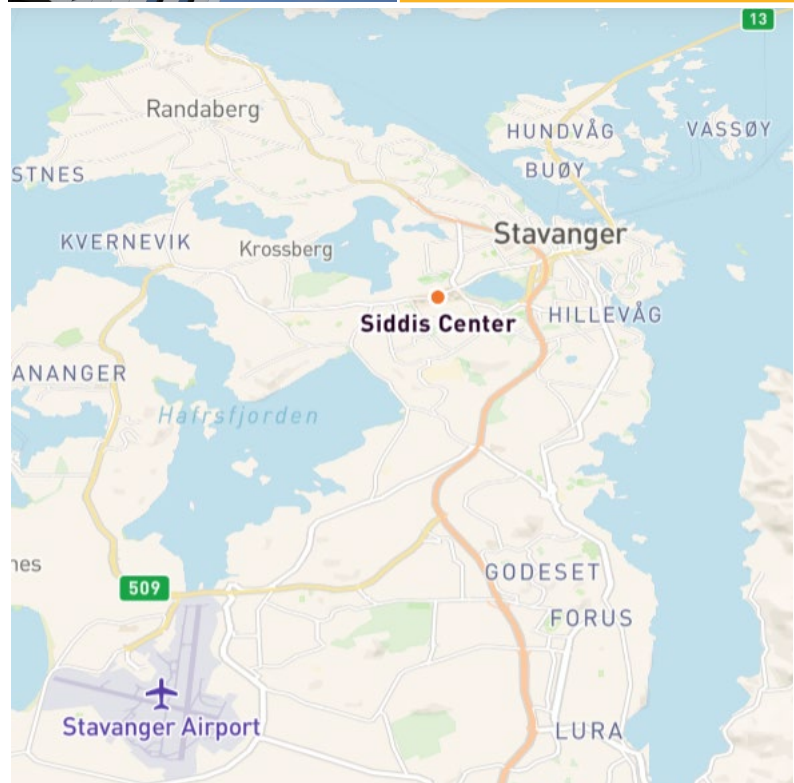
REQUIRED SPACE FOR THE PARALLEL SESSIONS

Stavanger Forum can house the required meeting space for FIG Working Week 2027. Please see the floor plan and table in the Appendix for the meeting room capacity. In addition to these meeting rooms, there are several meeting rooms at the on-site hotels at our disposal. There are networking rooms for the delegates at the second floor of Forum Expo. These rooms and the Forum Deli can also be used as break-out session rooms.

EXPO AND LUNCHES

The exhibition will be in Forum Expo (marked E on the map) which has a capacity of 4700 m². This will also be the venue for the lunches, attracting the delegates to the market place. We suggest a standing networking lunch and to use the whole exhibition hall, although there are several alternatives available.

See Appendix for an example of similar exhibition and lunch set up in Forum Expo.



PROPOSED VENUES

FIG WELCOME RECEPTION FORUM EXPO

We propose to hold the welcome reception at the conference venue in the exhibition hall, Forum Expo.



FIG FOUNDATION DINNER IMI FORUM

IMI Forum and in-house food and beverage company, Deja Vju have extensive expertise in catering large events. IMI Forum can cater large events with up to 920 persons seated banquet style. Top-modern technical equipment and a large stage suitable for both speeches and concerts, makes IMI Forum an easy choice when it comes to outstanding food and entertainment!



FIG GALA DINNER STAVANGER CONCERT HALL

Stavanger Concert Hall opened in 2012 and has since been the main cultural arena in Stavanger for many prestigious events. The concert hall is an attractive venue with its top modern Scandinavian design and seaside location.



FIG LEADERSHIP RECEPTION LEDAAL ROYAL RESIDENCE

Ledaal was built as a summer residence for the Kielland family in 1799 – 1803. It is now a heritage-listed site and used as a royal residence. The main building gives good insight into the lifestyle and taste of Stavanger's upper class in the first half of the 1800s. Ledaal is the ideal city landmark to host a reception for the FIG President, Council, Administration, heads of delegations, representatives of FIG Institutional partners and sister organisations.

We propose an option to combine the Gala dinner and the Foundation dinner to allow more time for smaller networking like Mingling Dinner, Dine around or home visits.

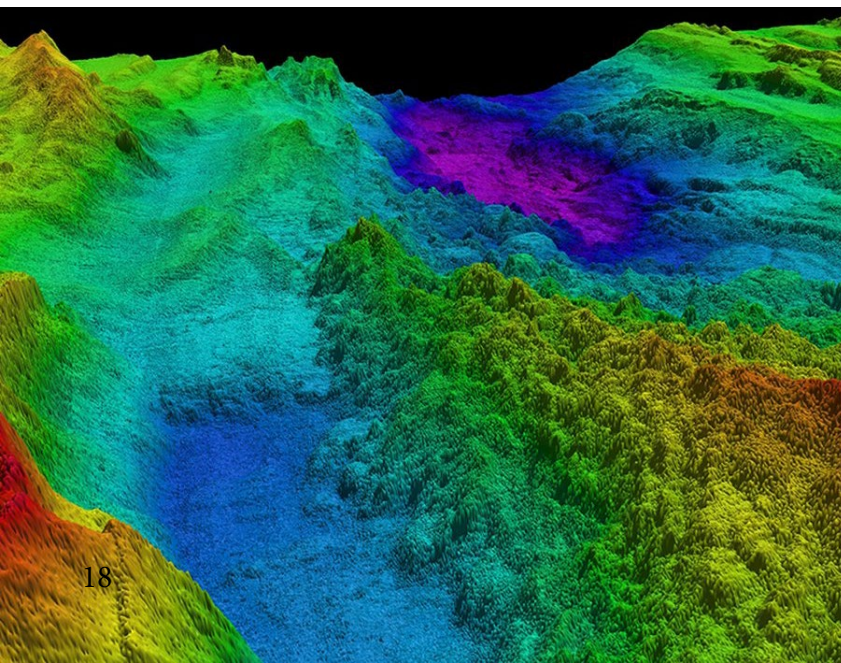




TECHNICAL VISITS

There are many options for interesting technical visits in the Stavanger region. We propose visits that are based on the technical program, actuality in 2027 and priorities from FIG:

- Norwegian Mapping Authority (Mareano, Marine basemap, cadastre, Core detailed map database)
- Electronic Chart Centre AS (collection, validation and distribution of electronic charts and maps)
- Stavanger and Sola Municipalities (Smart cities, Climate adaption)
- SASIRO (Center for Civil Protection in Rogaland County)
- Stiim Aqua Cluster (Complete ecosystem within aquaculture – green value chains)
- Ryfast tunnel or ROGFAST project (The longest undersea tunnel in the world)
- Nordic Unmanned (Surveillance of pollution from ships, logistics and robotics)
- Thales Norway Simulator (Flight training centre for helicopter)
- Equinor Headquarter (From oil and gas to become net-zero energy company by 2050)
- Green Mountain (Certified as one of the world's most safe and green data centre)
- Equinor Offshore Wind



SUSTAINABILITY

FIG Working Week 2027 will have the environment and climate in mind in reflection to the conference theme. We aim to have a *green thread* throughout the whole conference with the aim to reduce the carbon footprint. Stavanger is a compact city with most facilities within walking distance allowing for easy access to the convention centre and the social activities. CO2 emissions can be reduced by avoiding shuttle bus services and strongly promote the public transportation system. It is convenient to get a weekly travel pass and the Kolumbus transport system in Stavanger mostly operates electric busses.

FIG Working Week will be organised in eco-certified venues such as Stavanger Forum and the on-site hotels at Siddis Center. The venues will help the participants to make responsible choices by marking the menus with the calculated carbon footprint by using the calculator from Klimato. This is not forcing a choice but educating. To avoid waste from plastic bottles the participants can be given a Working Week drinking bottle that can be filled from free water tanks around the convention centre.

Organising of activities for the delegates will be a positive social impact on the destination. For example, organising a clean shores activity which involves cleaning litter from the coast/ beaches.

LEGACY FROM FIG WORKING WEEK 2027

FIG Working Week 2027 will leave a legacy that impacts the host city, Stavanger, the Norwegian geospatial and surveying sector and FIG organisation.

During and after the Working Week we want the local inhabitants in the Stavanger region to increase their knowledge on Geospatial information and surveyors' contribution to our daily life. To be able to achieve this we will cooperate with the University of Stavanger, Stavanger Municipality and Nordic Edge to create a showcase in Stavanger during the Working Week. Here we can have demonstrations of new developments and solutions for everyday life that are based on geospatial information. Examples can be in communications, where to find a transportation unit or a corresponding public transportation. Demonstration of flood risk for Stavanger City Centre and Sea rise and what preparedness is made to meet the potential risk. Demonstrations of various scenario for City Planning and other examples. Here we hope for cooperation also with local and regional media to spread the knowledge. Each year the Geospatial Council together with the Ministry of Local Government and Regional Development offer an award for best application demonstrating valuable use of Geospatial information. Some of these cases can be demonstrated and give more publicity and inspiration.

We want to increase international networking for our members and students to be able to learn and exchange experience and knowledge also after the Working Week and that the Working Week also could be an inspiration for Startups in our field.

We especially want to spread the knowledge to the participants in the Working Week about the Arctic and the Oceans importance for climate understanding and Geomatics as tools to contribute to the Sustainable Development Goals and to the Climate Agenda.

SOCIAL VOLUNTARY ACTIVITIES

There are several spectacular recreation opportunities in Stavanger and the surrounding area. In addition to more traditional tourist attractions, we propose to:

- Offer Home visits to Surveyors families in the area
- Organise "morning walking or running tours with the locals" around the nearest lake
- Haven E-sport centre for a Drone Champions League competition in *virtual Stavanger*.
- Beach cleaning at the beaches along the coast.

TRAVEL TO STAVANGER

Stavanger is within easy access with a well developed infrastructure for both national and international travelers. Most visitors travel to Stavanger by air.

BY FLIGHT

Stavanger Airport Sola is situated 15 km from downtown Stavanger. Stavanger Airport Sola offers daily up to 100 direct international and domestic flights to most Norwegian and European cities, including international hubs such as Amsterdam, Copenhagen and London. Stavanger Airport Sola is undergoing a major expansion and will by 2025 have the capacity to fly 6 million passengers in and out of Stavanger Airport Sola annually.

Boreal operates an airport transfer service from Stavanger Airport Sola to downtown Stavanger and downtown Sandnes. Departure every 20 minutes to downtown Stavanger.

BY FERRY / RAIL

Fjordline operates with one daily departure and arrival from the Stavanger Region to Hirtshals, Denmark, and is the largest cruise ferry to use single fuelled LNG engines.

All Eurail Pass holders get a 30% discount on Fjord Line ferry crossings all year round, on all routes. It applies to both passenger fares and air seats (on board of MS Stavangerfjord and MS Bergensfjord).

Trains operate several times per day from Oslo and Kristiansand.

VISA REGULATIONS TO NORWAY

The entry to Norway of foreign nationals is subject to the immigration regulations. Visitors from EU and EEU countries and about 75 countries that have agreements with Norway can travel to Norway without Visa.

Persons who do not need a visa to visit Norway (visa-free) - UDI

Norway is a member of the Schengen passport and border control cooperation. For visitors that needs visa the regulations for Schengen is to be followed.

Schengen Visa Application Process - How to Apply for a Visa to Europe (schengenvisa.info.com)

Participants to the Working Week can make an application for Visa to the nearest Norwegian Embassy. We will set up more detailed information on how to apply and estimate time for handling the application valid for 2027 in due time for the Working Week.





TRAVEL LIKE A LOCAL

Bus ticket prices (2023)

One-way ticket	42 NOK / 4,2 Euro
24h pass	85 NOK / 8,50 Euro
Weekly pass	300 NOK / 30 Euro

Stavanger is a compact city with a pedestrian city centre, and all amenities are within a short walking distance. To reach hotels and venues outside of Stavanger, the city has a well developed efficient and environmental friendly bus system, run by Kolumbus. Buses to the industrial Forus area and Stavanger Forum run every 5 -10 minutes.

Or, why not reach Siddis Center by bike? The city has invested heavily in el-bicycles that can be used by any one who downloads the Kolumbus app.

From		Journey time/km	Bus Routes
Stavanger City Centre	Stavanger Airport	20 mins/14,5 km	Boreal airport shuttle service
City Centre	Stavanger Forum	5-10 mins/2,7 km	2,3, 6 & 7
City Centre	Clarion Energy	5-10 mins/3,6 km	2,3, 6 & 7
City Centre	Scandic Stavanger Forus	20 mins/10,9 km	2, 3
Clarion Air / Quality Airport Hotel		20 mins /40 mins	Boreal airport shuttle service or local bus



Photo: Siddis Center / Tommy Ellingsen

ACCOMMODATION

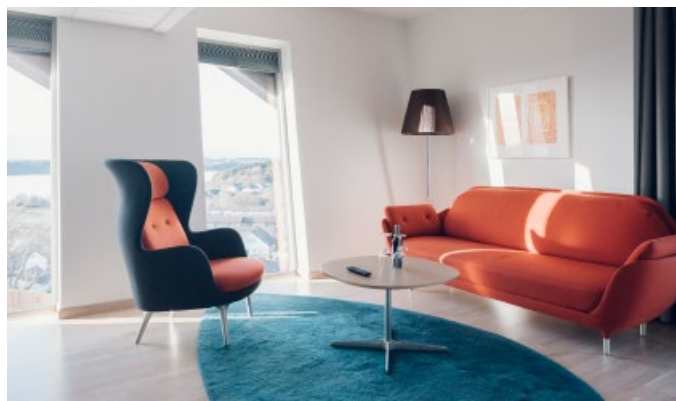
ON-SITE HOTELS AT SIDDIS CENTRE

Siddis Center offers an easy and comfortable stay in the two on-site hotels. The location is perfect for all types of guest and conference delegates who would like to stay close to the event. At Siddis Center you will find the Stavanger region's largest conference hotel Clarion Hotel Energy and Rogaland's tallest hotel, Stavanger Forum Hotel.

Clarion Hotel Energy is the Stavanger region's largest hotel and provides energy, art and design. Clarion Hotel Energy offers 400 rooms with comfortable beds, iPod docking stations, LED TVs, and of course free WIFI, breakfast and full service restaurant Kitchen & Table.

Stavanger Forum hotel offers one of the Stavanger region's best views. Enjoy the breakfast buffet from Rogaland's tallest hotel with its 182 rooms distributed on 21 floors.

Require more than 682 hotel rooms? There are thousands of rooms to choose from in the city center as well!



CITY CENTRE HOTELS

In and around Stavanger there are more than 35 hotels and apartments, most of them located in the city centre with prices ranging from 60 EUR up to 250 EUR per room per night.

City Centre Hotels	Rooms
Radisson Blu Atlantic Hotel	364
Clarion Hotel Stavanger	250
Scandic Stavanger City	226
Comfort Hotel Square	194
Thon Hotel Stavanger	190
Thon Hotel Maritim	178
Clarion Collection Hotel Skagen Brygge	110
Victoria Hotel	107
Scandic Stavanger Park	84
Frogner House Myhregaarden	53
L115	46
Thon Apartments	43
Best Western Havly Hotell	42
Frogner House Apartments	40



Photo: Thon hotels

OVERVIEW



HOTELS

35



ROOMS
Stavanger City

3000



ROOMS
Within 30 km

5200

BUDGET

Photo: Siddis Center / Jan Inge Haga

The budget is set up following the FIG template. VAT is included in expenditure and income. The budget presented includes 880 paying participants and 30 exhibitors. The proposed normal registration fee is 650 Euro for delegates to GA + conference, 250 Euro for Students and Young Surveyors and 200 Euro for accompanying persons. The budget is based on local currency with 2022 price level. The exchange rate used is 1 euro = 10 NOK.

EXPENDITURE	<u>Local currency</u>	<u>Total EUR</u>
1. MARKETING/PROMOTION/PUBLICITY	700 000	70 000
2. VENUE	800 000	80 000
3 TECHNICAL SUPPORT	280 000	28 000
4 CATERING	1 500 000	150 000
5 EXHIBITION	600 000	60 000
6 STAFFING	100 000	10 000
7 PARTICIPANT'S KIT	135 000	13 500
8 DECORATIONS	30 000	3 000
9 OPENING CEREMONY	75 000	7 500
10 HOSTED WELCOME RECEPTION	300 000	30 000
11 SOCIAL EVENTS - NETWORKING	1 130 000	113 000
12 TECHNICAL TOURS	100 000	10 000
13 ACCOMPANYING PERSONS PACKAGE		
14 SITE VISITS - TRAVELS - ACCOMMODATION	300 000	30 000
15 CONFERENCE MANAGEMENT	550 000	55 000
16 FIG FOUNDATION FEE	150 000	15 000
17 VARIOUS	400 000	40 000
TOTAL EXPENDITURE	7 150 000	715 000
INCOME	<u>Local currency</u>	<u>Total EUR</u>
PARTICIPANTS	5 080 000	505 000
SPONSOR/EXHIBITION INCOME	1 350 000	135 000
SOCIAL EVENTS	800 000	80 000
TOTAL INCOME	7 230 000	720 000
SUMMARY		
Total income	7 230 000	723 000
Total expenditure	7 150 000	715 000
RESULT	80 000	8 000

PREVIOUS EVENTS BY MEMBER ASSOCIATION AND THE VENUE

During the pandemic a lot of conferences was cancelled or was organised digital. Here we list some of the more central and relevant conferences in 2019, 2021 and 2022. In addition, both the Norwegian Mapping Authority, the Universities and the private companies organise many seminars and webinars both at national and regional level.

2019 Geomatic Conference 2019, March, 400 participants

2019 The Smart Technology 2019, October, 350 participants

2021 OTD - Offshore Technology Days 2021, 20 000visitors.

2021 Geomatic conference 2021, March, 360 participants

2021 The Smart Technology 2021, October, 240 participants

2022 Geomatic Conference 22, March 29-31, 360 participants, 12 exhibitors

2022 The Smart Technology 2022, October 17 – 18, 295 participants, 25 exhibitors

2022 Municipal Geomatic Conference 22, November 29-30, 185 participants

2022 ONS 2022, 29.8 to 1.9, 68 000 visitors (hosted every second year at Siddis Center)

2022 Nordic Congress of General Practice, June 21-23, 1000 participants.

2022 Agrovision 2022, November 4-6, 15 000 visitors

In 2027 there will be several other conferences in Stavanger. Some bigger events that are organised every year are:

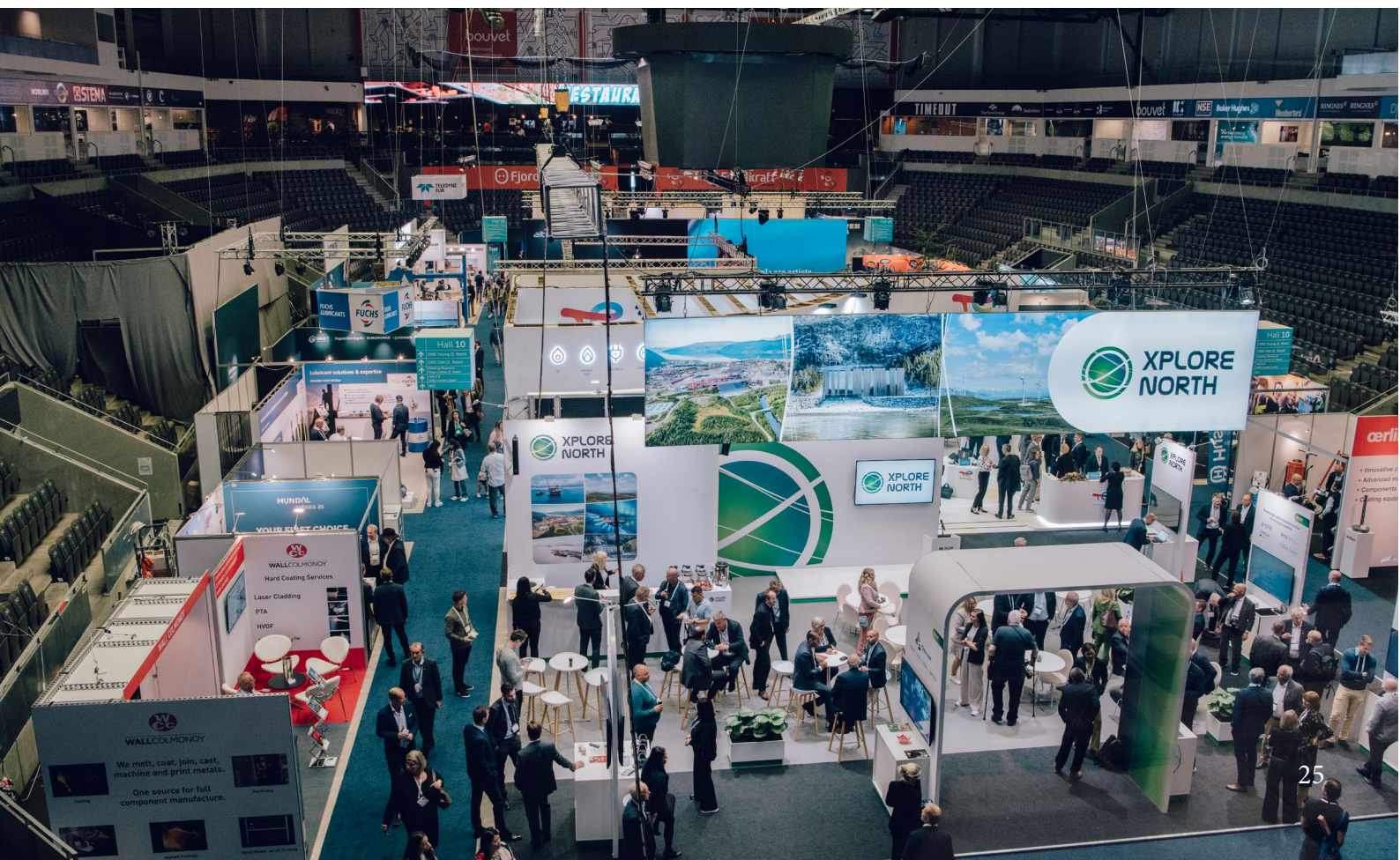
2027 Nordic Edge Expo (May 2027, may change to every second year)

2027 Aquavision (June 2027)

2027 Gladmat food festival (July 2027)

2027 Offshore Technology Days (october 2027)

2027 Aquanext (November 2027)



SUMMARY Related to the general instruction

Propose a city:

The proposed city is Stavanger; located in south-western Norway and by the North Sea,

Propose one or more potential venues:

The proposed venue is at Siddis Center that halls for up to 4000 people, more than 30.000 square meters of exhibition space and accommodation for more than 1000 guests.

Provide three sets of dates for the event:

The proposed dates for FIG Working Week 2027 are:

21. May to 27. May 2027

28. May to 3. June 2027

4. June to 10. June 2027

Include information on accommodation options and pricing at or in the vicinity of the proposed venue

Two hotels at the convention centre with a capacity close to 600 rooms. In addition, there are more than 35 hotels and apartments in the city centre with prices ranging from 60 EUR up to 250 EUR per room per night.

Include information of travel and transportation options and connectivity to the proposed city and the venue

Stavanger can be reached directly by flight from many European airports. Frequent public transportation to the city centre and to the convention centre. Frequent public transportation between the convention centre and city centre with a travel time of about 10 minutes. The city centre is a 30 minute walk away.

Indicate any support and funding from national, regional, or provincial/state governments as well as respective tourism or convention authorities

FIG Norway have support from several Universities, from the private Geomatics Industry as well as from several Governmental Institutions. The Norwegian Geospatial Council is highly welcoming a FIG Working Week. Stavanger City by its Mayor welcomes FIG to Stavanger, and they also participate with some funding through Region Stavanger that will support in the preparation for the Working Week in Orlando as well as to the Working Week in 2027.

Outline a preliminary budget for the event

The preliminary budget is attached with a balance of 8.000 EUR based on 880 paying participants and conservative estimations.

Estimate of the level of affordability of meals, transportation, and recreation within the proposed city

Public transportation pass at a cost of 30 euros per week or 8,50 euros for a 24 h ticket.

Some examples of recreation cost; entry to the Norwegian Petroleum Museum costs 15 / 7,5 euros and the breath-taking 3 hour fjord cruise in Lysefjorden cost 60 euros. Prices for meals ranging from an average 10 euros for a lunch and from 20 euros for a dinner at mid-range restaurants.

Topics of relevance for the destination

Ocean surveying and Electronic Chart production is managed from Stavanger. The Mareano program and Marine coastal base map are of relevance for the destination. The region is in the forefront of Smart Cities development and host the Nordic Edge Expo that is a major conference in the Nordic Countries. The project ROGFAST with the tunnel below the Boknafjord is under construction and will be the longest and deepest undersea tunnel in the world when it is finished in 2033.

Ideas technical visits and for social activities.

For technical visits there are many opportunities mentioned in the BID.

Why do you want to host FIG Working Week 2027?

FIG Norway had many participants to the FIG Congress in Warsaw and wants to boost the Norwegian Geomatics industry, to mark up the results of the Norwegian Geospatial Strategy that was launched by the Government in 2018. We also want to highlight surveyors' contribution to the Arctic, to Coast and Ocean management, to Climate Change adaption and to Smart City management. We also want to contribute to Young Surveyors in Norway and bring more young people into the FIG network.

What are your objectives and outcomes you hope to achieve by hosting the Working Week?

Our goal is that hosting will be unifying for our association to achieve a stronger international network for the Geospatial Society in Norway and to exchange knowledge and ideas.

What will be your suggested theme for the Working Week?

The suggested themes are Survey the Arctic, Coast and Ocean management, Climate change and Smart Cities in the frame of the Sustainable Development Goals.

Why is the destination of interest?

Stavanger is of interest because it is a central city within marine and maritime industry, the energy sector and is a leading region in the Smart City concept. Stavanger is experienced conference city with good capacity and is home to the largest energy companies as well as over 400 service and technology companies with an increase in companies within renewable energy and other new solutions.

The City of Stavanger also makes its mark as a smart city. In 2022, Stavanger was declared one of the Lighthouse cities within the EU project New European Bauhaus. This means that for the next four years from 2022, the city and 15 private and public partners will work with societal innovative solutions to make the city climate-neutral with inclusion, aesthetics and sustainability. The city is also part of the EU Cities Mission to create 100 climate-neutral cities by 2030.

What are previous professional events organised or hosted by your member association in the past three years?

Listed in the BID / Appendix.

What are the major events organised at the proposed venue in the past two years?

Listed in the BID / Appendix.

What are the major events planned, if any, in the proposed city in 2027?

Listed in the BID / Appendix.

What initiatives or activities are you suggesting to ensure a sustainable conference environment?

We will have the environment and climate in mind in reflection to the conference theme. We aim to have a green thread throughout the whole conference with the aim to reduce the carbon footprint. Stavanger is a compact city with most facilities within walking distance allowing for easy access to the convention centre and the social activities. More details are mentioned in the BID

What new initiatives or activities are you suggesting to expand the visibility and attractiveness of this premier and flagship FIG global forum for the Profession?

We propose to:

- Offer Home visits to Surveyors families in the area
- Organise “morning walking or running with the locals” around the nearest lake
- Combine the Gala dinner and the Foundation dinner to allow more time for smaller networking in a “Mingling Dinner” or “Dine around”
- Have streaming from selected parts of the conference
- Organise a virtual Drone competition especially for Young Surveyors
- Combine one day with the Norwegian Geomatic Conference
- Cooperate with Nordic Edge to highlight Smart City solutions and geospatial innovation.

What legacy do you expect to leave your member association and your profession locally from the Working Week?

FIG Working Week 2027 will leave a legacy that impacts the host city, Stavanger, the Norwegian geospatial and survey sector and FIG organisation. We will have increased awareness of surveyor’s contribution the Arctic and Ocean management. Young Surveyors and students will have the opportunity to be part of the international network.

What legacy do you expect to leave for the destination?

More people in the region will have better understanding about surveyors’ contribution to our daily life, to the management of the Oceans, to the Climate Change and to achieve the Sustainable Development Goals.

APPENDIX





DAY TRIPS NEAR STAVANGER

FJORD CRUISE ON THE LYSEFJORD

Experience one of Norway's most breathtaking fjords. The Lysefjord is the host to one of Norway's most spectacular wonders: the Pulpit Rock, a rock formation 600 meters above sea level. The fjord is 42 kilometres long with steep mountainsides reaching heights of 1100 metres.



HIKE TO THE PULPIT ROCK

This breathtaking scenic point, hanging 600 meters above the Lysefjord, is chosen by Lonely Planet as one of the top ten most spectacular viewing points in the world. The 25x25 meter plateau offers views that will mesmerize you!





MUSEUMS AND CULTURAL PLACES OF INTEREST

Norwegian Petroleum Museum
The Science Museum
Stavanger Museum
Stavanger Art Museum
Stavanger Maritime Museum
Norwegian Canning Museum
Utstein Monastery
Museum of Archeology
Iron Age Farm at Ullandhaug

...and many more!



FLOR OG FJÆRE

The boat trip, gardens and food make your visit to Flor&Fjære a feast for the senses!

A visit to Flor&Fjære begins with a pleasant boat trip. Upon arrival to the island, our guides are ready to show you the beauty of the gardens, before dinner is served in the garden jungle.



VIKING TOUR

The Vikings have conquered Hollywood and are now returning home to Norway. This is your chance to meet the Vikings!

With the recent hit series like The History Channel's «Vikings» and the BBC's «The Last Kingdom», the popularity of Viking has exploded. Guide-companiet is proud to present the story of the Vikings – historically correct, with a touch of Hollywood. The Viking Tour will give you the complete picture of the Scandinavian ancestors. Warriors yes, but they were also traders, explorers and great artists.



DINING IN STAVANGER

RE-NAA

RE-NAA was the first restaurant outside of Oslo to achieve a Michelin star in the Scandinavian Michelin Guide. From 2020 RE-NAA was awarded it's second star.

SABI SUSHI OMAKASE

If you want a very special experience, Sabi Sushi offers Omakase. A few hundred meters outside the centre of Stavanger, on the city's east end, "Oyakata" sushi master, Roger Asakil Joya and the other founders of the chain Sabi Sushi, run Norway's perhaps most exclusive sushi restaurant. Sabi Sushi Omakase is the second restaurant outside of Oslo to receive the Michelin Star. (2017).

TANGO BAR AND KITCHEN

Tango Bar and Kitchen is best described as "Rough fine dining". The restaurant is pleasantly located by the quayside, and is dominated by its open kitchen. The 3 course set menu offers a subtle modern interpretation of classic cooking and dishes are founded on the best ingredients and techniques.

SPISERIET

Culinary experiences are also culture, and eating out is often the icing on the cake while travelling or when you are just on a night out. With its important focus on international identity, Spiseriet is certainly an ideal option for lunch, dinner or for beverages when visiting the Stavanger Concert Hall.

VÅGEN SPISERIET – THE FISHMARKET

A lovely place to eat fish and fresh seafood, where the menu is based on the catch of the day. The enthusiastic chefs offer tasty dishes for lunch and dinner. The focus is entirely on local ingredients. The atmosphere is informal and intimate.

MICHELIN

Sabi Sushi Omakase



RE-NAA



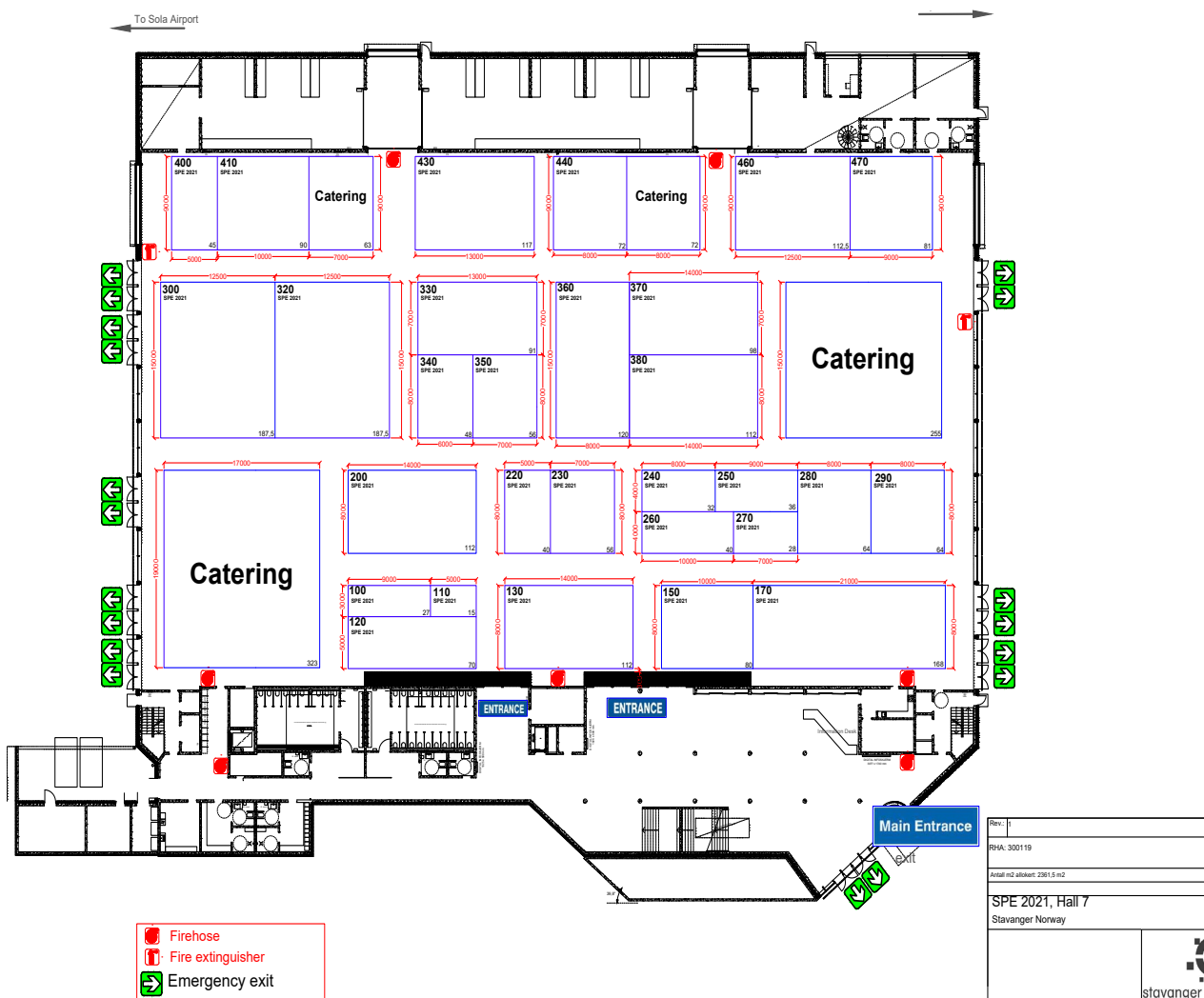
ROOM CAPACITY

STAVANGER FORUM

Room name	Area	Classroom	Theatre
IMI Forum A + B+ C	1240 m2	820	1707
IMI Forum A + B	1020 m2	700	1327
IMI Forum A	680 m2	470	837
IMI Forum B	340 m2	200	400
IMI Forum C	220 m2	120	220
Forum Torg	690 m2		
Lysefjorden A + B+ Kjerag + Preikestolen	640m2	420	744
Lysefjorden A + Kjerag	320 m2	210	372
Lysefjorden B + Preikestolen	320 m2	210	372
Lysefjorden A	240 m2	210	246
Lysefjorden B	240 m2	150	246
Kjerag	80 m2	48	70
Preikestolen	80 m2	48	70
Synesvarden	80 m2	42	80
Uburen	200 m2	134	220
Vårlivarden	80 m2	42	80
Snønuten	200 m2	134	220
Forum Expo:			
Vindadjorden	131 m2	84	124
Skaulen	33 m2		
Jæren	68 m2	28	62
Jæren 1	34 m2	18	32
Jæren 2	34 m2	18	32
Forum Deli			75

FORUM EXPO

Set - up catering and expo





WELCOME TO STAVANGER!

As Mayor of the city of Stavanger, it is my pleasure to welcome the International Federation for Surveyors - FIG to host your conference, FIG Working Week 2027, in Stavanger.

Stavanger has for centuries been a hub for trade, shipping and business. International networks have been developed from as far back as the Iron Age. Stavanger is known as the energy capital of Norway, and the city and its surrounding region is recognized for agriculture, technology and innovation. Stavanger was the European Capital of Culture in 2008 with good reason. The many festivals and events throughout the year such as Gladmat, Tall Ship Races and the International Chamber Music Festival, makes the city a vibrant place to visit.

Stavanger is an established convention destination, with a number of recently hosted international events returning after the pandemic, such as EORNA 2022, ECIR 2022 and the NCGP in June 2022. In August 2022, the global biennial energy conference and exhibition ONS, was hosted again in Stavanger. It is one of the world's largest energy events with 68 000 visitors in 2022.

Siddis Center is a modern conference and exhibition complex with up to date facilities. The area holds a number of suitable venues that are perfect for FIG Working Week 2027 such as Stavanger Forum and Forum Expo.

Stavanger is surrounded by spectacular nature and has for long been known as a region of contrasts. From the sandy beaches along the coast to the mountains and fjords. Your attendees will be able to discover the unique and rugged nature that cannot be seen elsewhere in the world.

I hope FIG Working Week 2027 in Stavanger will be a success for FIG and all your attendees.

Sincerely yours,

Kari Nessa Nordtun
Mayor Stavanger



STAVANGER KOMMUNE

WELCOME LETTER FROM DIRECTOR OF TOURISM



As the Director of Tourism in the Stavanger Region, I am delighted to welcome the International Federation of Surveyors to convene FIG Working Week 2027 in Stavanger.

Stavanger is an established convention destination, with a wide range of recently hosted events, meetings and exhibitions. The meeting facilities are modern and flexible.

Your Norwegian hosts are acquainted with the stringent

requirements involved in organizing international conventions for highly demanding, international delegates and partners. Nothing is left to chance to guarantee that your event will be successful.

As the convention bureau we will further assist and provide FIG with the following:

- Funding assistance and support
- Apply for a hosted reception at Ledaal
- Destination promotion at Fig Working Week 2026
- Assistance finding suppliers
- Suggestions for social programme
- Co-ordination of site-visits and inspections as needed
- Local and national contacts
- Relevant city promotional material for delegates

It is in our interest that your event will be a success, and we will do our best to assist the International Federation of Surveyors - FIG before and during the conference.

I hope you will consider Stavanger for FIG Working Week 2027 and I look forward to welcoming FIG to the Stavanger Region.

Sincerely yours,

PER MORTEN HAARR

Director of Tourism

the **Stavanger**
region

WELCOME TO THE STAVANGER REGION

- Where the world's most northern tropical paradise is waiting for you!



BUDGET FOR FIG WORKING WEEK 2027 - VERSION OF 2022_12_20

Not all areas of expenditure or income may be relevant.

Presumptions

Time:

Conference days:

to be decided

Venue:

to be decided

Price Level:

Language:

English

EXPENDITURE

	<u>Local currency</u>	<u>Total EUR</u>	<u>Comments</u>
1. MARKETING/PROMOTION/PUBLICITY			
TOTAL	700,000.00	70,000	
2. VENUE			
TOTAL	799,500.00	79,950	
3 TECHNICAL SUPPORT			
TOTAL	280,000.00	28,000	
4 CATERING			
TOTAL	1,499,400.00	149,940	

Not all areas of expenditure or income may be relevant.

5 EXHIBITION		
TOTAL	600,000.00	60,000
6 STAFFING		
TOTAL	100,000.00	10,000
7 PARTICIPANT'S KIT		
TOTAL	135,000.00	13,500
8 DECORATIONS		
TOTAL	30,000.00	3,000
9 OPENING CEREMONY		
TOTAL	75,000.00	7,500
10 HOSTED WELCOME RECEPTION		
TOTAL	300,000.00	30,000
11 SOCIAL EVENTS - NETWORKING		
TOTAL	1,130,000.00	113,000
12 TECHNICAL TOURS TOURS		
TOTAL	100,000.00	10,000
13 ACCOMPANYING PERSONS PACKAGE		
TOTAL	0.00	0
14 SITE VISITS - TRAVELS - ACCOMMODATION		
TOTAL	300,000.00	30,000
15 CONFERENCE MANAGEMENT		
TOTAL	550,000.00	55,000
16 FIG FOUNDATION FEE		
TOTAL	150,000.00	15,000
17 VARIOUS		
TOTAL	400,000.00	40,000
TOTAL EXPENDITURE	7,148,900 MAD	714,890
INCOME		
10 € is included in the fees as FIG Foundation Royalties		
	Local currency	
PARTICIPANTS		
TOTAL	5,080,000.00	508,000
SPONSOR/EXHIBITION INCOME		
TOTAL	1,350,000.00	135,000
SOCIAL EVENTS		
TOTAL	800,000.00	80,000
TOTAL INCOME		723,000
SUMMARY		
Total income	7,230,000	723,000
Total expenditure	7,148,900	714,890
RESULT	81,100	8,110

1 EUR = USD

1 USD = EUR

1 LOC = EUR

1 EUR = LOC

BUDGET FOR FIG WORKING WEEK 2027 - VERSION OF 2022_12_20

Not all areas of expenditure or income may be relevant.

Presumptions

Time:	
Conference days:	to be decided
Venue:	to be decided
Price Level:	
Language:	English

INCOME

10 € is included in the fees as FIG Foundation Royalties

	<u>Unit cost in</u>		<u>Units</u>	<u>Total EUR</u>	<u>Comments</u>
	<u>EURO</u>				
PARTICIPANTS					
Delegates; Early	6,000.00	600.00	300	180,000	Before xx xx 20xx, incl. possible VAT - 10 € to Foundation
Delegates: Normal	6,500.00	650.00	420	273,000	xx xx - xx xx - 10 € to Foundation
Delegates: Late	7,000.00	700.00	40	28,000	After xx xx 20xx - 10 € to Foundation
Delegates: Daily	2,000.00	200.00		0	10 € to Foundation
Young Surveyors Registration (incl YS Conference) *	2,500.00	250.00	40	10,000	10 € to Foundation
Students	2,500.00	250.00	20	5,000	10 € to Foundation
Accompanying persons	2,000.00	200.00	60	12,000	Foundation
Exhibitors		0.00		0	Under Sponsors og exhibitors
Local delegates				0	10 € to Foundation
Total paying participants:	5,080,000.00		880	508,000	Registration fees include lunches and coffees All registrations through FIG online registration
<i>Others:</i>					
Commission Chairs& other chairs etc		0.00	20	0	Task force chairs, Foundation Pres., Past presidents
Council Members and office		0.00	10	0	
Invited guests		0.00	40	0	specially invited speakers, plenary speakers, UN/WB participants
Local Org. Committee		0.00	30	0	
Speakers from developing countries		0.00	20		Given as grants - only registration
Exhibitors - exhibitor pass		0.00			included in exhibition package
Exhibitors - delegate pass		0.00		0	included in exhibition package
TOTAL	5,080,000.00		1,000	508,000	
SPONSOR/EXHIBITION INCOME					
Local government	200,000.00	20,000.00	1	20000	
Local sponsors	500,000.00	50,000.00	1	50000	
International sponsors		0.00	1	0	
Exhibitors (International)	25,000.00	2,500.00	10	25000	
Exhibitors (National)	20,000.00	2,000.00	20	40000	
TOTAL	1,350,000.00			135,000	
SOCIAL EVENTS					
Conference Dinner/Gala Dinner	800,000.00	80,000.00	1	80,000	
Cultural Evening		0.00		0	
Technical tours		0.00		0	
Social tours		0.00		0	
TOTAL	800,000.00			80,000	
TOTAL INCOME	7,230,000.00			723,000	

BUDGET FOR FIG WORKING WEEK 2027 - VERSION OF 2022_12_20

Not all areas of expenditure or income may be relevant.

Presumptions

Time:	
Conference days:	to be decided
Venue:	to be decided
Price Level:	
Language:	English

EXPENDITURE

	<u>Local currency</u>	<u>Unit cost in</u> <u>EURO</u>	<u>Units</u>	<u>Total EUR</u>
1. MARKETING/PROMOTION/PUBLICITY				
Graphic design for the conference	25,000	2,500	1	2,500
Website	30,000	3,000	1	3,000
Promotional Material - design	25,000	2,500	1	2,500
Promotional Material - printing	20,000	2,000	1	2,000
Marketing locally	50,000	5,000	1	5,000
Distribution; Handl + Postage	50,000	5,000	1	5,000
Media	50,000	5,000	1	5,000
Advertisement		0	1	0
Magazines		0	1	0
Attendance previous FIG Conferences	240,000	24,000	1	24,000
Farewell Reception	150,000	15,000	1	15,000
Attendance Intergeo, Chintergeo ect.	60,000	6,000	1	6,000
TOTAL	700,000			70,000

2. VENUE		Days	Units	
Administrative rooms/office				
Member Association Conference Office	0	0		0
LOC Conference room	0	0		0
FIG Conference office	0	0	7	1
FIG President's meeting room	0	0	7	1
Commision meeting rooms		0		0
#1 - Council meeting		0		0
Meeting room	12,500	1,250	1	1
#2 - ACCO meeting		0		0
Meeting room	14,000	1,400	1	1
#3 and #7 - General Assemblies		0		0
Meeting room GA	30,000	3,000	2	1
#4-#6 - Conference days		0		0
Plenary Hall	90,000	9,000	3	1
Technical Session Rooms	13,000	1,300	3	10
Meeting rooms	0	0	1	
#6 afternoon - President's meeting		0		0
Meeting Room	13,000	1,300	1	1
		0		
Extra furniture and other equipment	40,000	4,000	1	1
Other venue costs		0		0
TOTAL	799,500			79,950

3 TECHNICAL SUPPORT		Days	Units	
Wifi		0		0
Fixed Internet Connection		0		0
General Technical Support	50,000	5,000	1	1
		0		
Administrative rooms/office	12,000	1,200	1	1
Office equiptment ei. Printer		0		
Laptop and monitor		0		
Wifi/Internet		0		

#1 - Council meeting		0			
Beamer, Screen, Laptop	3,000	300	1	1	300
#2 - ACCO meeting		0			
Beamer, Screen, Laptop	3,000	300	1	1	300
#3 and #7 - General Assemblies		0			
Technical equipment	10,000	1,000	2	1	2,000
Technical Support - technician panel	6,000	600	2	1	1,200
#4-#6 - Conference days		0			
Plenary Hall	6,000	600	5	2	6,000
Technical Session Rooms	3,000	300	3	10	9,000
Meeting rooms		0			
Technical assistance		0			
#6 - President's meeting		0			
2 handheld microphones		0	1	2	0
Speakers Preperation Room		0			0
Laptop mm			4	3	0
Presentation distribution system		0	4		0
Technical assistance		0	4		0
Fixed Internet Connection		0			
Registration		0			0
Laptop	2,000	200	6	1	1,200
Color printers	1,000	100	6	3	1,800
Fixed Internet Connection		0			0
Technical assistance					
TOTAL	280,000				28,000

4 CATERING		Days	Units		
#1 - Council meeting					
2x Coffee, 1x Lunch	360	36	1	10	360
#2 - ACCO meeting					0
2x Coffee, 1x Lunch	360	36	1	25	900
Administrative room/offices					0
Coffee / tea	60	6		10	0
Refrechments	60	6		10	0
Lunch		0			0
General Assembly (2 days) #3 and #7					0
Lunch	240	24	2	350	16,800
Coffee	60	6	4	350	8,400
Conference days (3 days) #4-#6					0
Lunch	240	24	3	1,000	72,000
Coffee	60	6	6	1,000	36,000
Presidents' meeting #6					0
Coffee	60	6	1	80	480
Morning Meetings					0
		0			0
Misc	150,000	15,000	1	1	15,000
		0			0
TOTAL	1,499,400				149,940

5 EXHIBITION					
Exhibition 2350 sqm2	90,000	9,000	3	1	27,000
Construction Cost	50,000	5,000	1	1	5,000

Booth Shell Scheme		0		30	0
Power socket		0			0
Basic light		0			0
Carpet		0			0
Furniture		0			0
Facial Board		0			0
Waste etc.		0			0
Misc	60,000	6,000	1	1	6,000
Stand Packet	5,500	550	1	40	22,000
TOTAL	600,000				60,000

6 STAFFING

Welcome in Airport	0	0		4	0
Registration Staff	0	0		1	0
Speakers preparation Room	0	0		0	0
Information Kiosks	0	0		0	0
Volunteers/students/helpers		0		0	0
Misc	100,000	10,000		1	10,000
TOTAL	100,000				10,000

7 PARTICIPANT'S KIT

Badge - paper	5	1		1,000	500
Badge - holders	8	1		1,000	800
Lanyard	5	1		1,000	500
Conference bag	50	5		1,000	5,000
Writing pads and pens	5	1		1,000	500
Programme book - work and design	25,000	2,500	1	1	2,500
Programme book - printing	10,000	1,000		1	1,000
Gift	90	9		300	2,700
TOTAL	135,000				13,500

8 DECORATIONS

Banners at venue	2,500	250		4	1,000
Posters	500	50		20	1,000
Backdrops		0		0	0
Signages		0		0	0
flowers	10,000	1,000		1	1,000
Artwork		0		0	0
Printing		0		0	0
TOTAL	30,000				3,000

9 OPENING CEREMONY

Technical equipment	25,000	2,500		1	2,500
Entertainment	50,000	5,000		1	5,000
TOTAL	75,000				7,500

10 HOSTED WELCOME RECEPTION

Venue	25,000	2,500		1	2,500
Refreshments	250	25		1,000	25,000
Entertainment / Music	20,000	2,000		1	2,000
Decoration	5,000	500		1	500
TOTAL	300,000				30,000

11 SOCIAL EVENTS - NETWORKING

Foundation Dinner

Venue		0			0
Technical Equipment	og service	10,000	1,000	1	1,000

Site Staff	35,000	3,500	1	3,500
Decorations	10,000	1,000	1	1,000
Refreshments	800	80	550	44,000
Entertainment/Music	40,000	4,000	1	4,000
	0	0	0	0

Gala Dinner

Venue	60,000	6,000	1	6,000
Technical Equipment	10,000	1,000	1	1,000
Site Staff	35,000	3,500	1	3,500
Decorations	10,000	1,000	1	1,000
Refreshments	800	80	550	44,000
Entertainment/Music	40,000	4,000	1	4,000
	0	0	1	0

Special dinner - if included

				0
				0
				0

TOTAL 1,130,000 113,000

12 TECHNICAL TOURS TOURS

Technical tours

Transportation	100,000	10,000	1	10,000
Gift		0	0	0
Technical tours		0	0	0
Technical tours		0	0	0
Technical tours		0	0	0
Technical tours		0	0	0
Technical tours		0	0	0

Social Tours

Social tours - full day		0	0	0
Social tours - half day		0	0	0
Social tours - half day		0	0	0
Social tours - half day		0	0	0
Social tours - half day		0	0	0

TOTAL 100,000 10,000

13 ACCOMPANYING PERSONS PACKAGE

Tour?				
Gift?				

TOTAL 0

14 SITE VISITS - TRAVELS - ACCOMMODATION

Site Visits	45,000	4,500	2	9,000
LOC promotion trips	50,000	5,000	3	15,000
Complimentary Accommodation - LOC		0	0	0
Complimentary Accommodation - FIG	2,500	250	8	6,000
Complimentary Airfares - LOC		0	0	0
Complimentary Airfares - FIG		0	0	0
LOC local meetings		0	0	0

TOTAL 300,000 30,000

15 CONFERENCE MANAGEMENT

Delegate Service (registrations)		45	1,000	45,000
Abstract handling				0
Project coordination, LOC	50,000	5,000	1	5,000
Project management, FIG	50,000	5,000	1	5,000
TOTAL	550,000			55,000

16 FIG FOUNDATION FEE

FIG Foundation Fee		10	1,000	10,000
--------------------	--	----	-------	--------

FIG Foundation Dinner		10	500	5,000
TOTAL	150,000			15,000

17 VARIOUS

Printing - additional (incl. GA papers)		0		
Keynote speakers -gifts		0	0	0
Keynote speakers - Travels		0		
Welcome in Airport		0	0	0
Transfer - shuttlebusses		0	0	0
Insurance		0		
Bank/credit card charges/confirmations		0	0	0
Misc.	400,000	40,000	1	40,000
TOTAL	400,000			40,000

TOTAL EXPENDITURE	7,148,900			714,890
--------------------------	------------------	--	--	----------------