

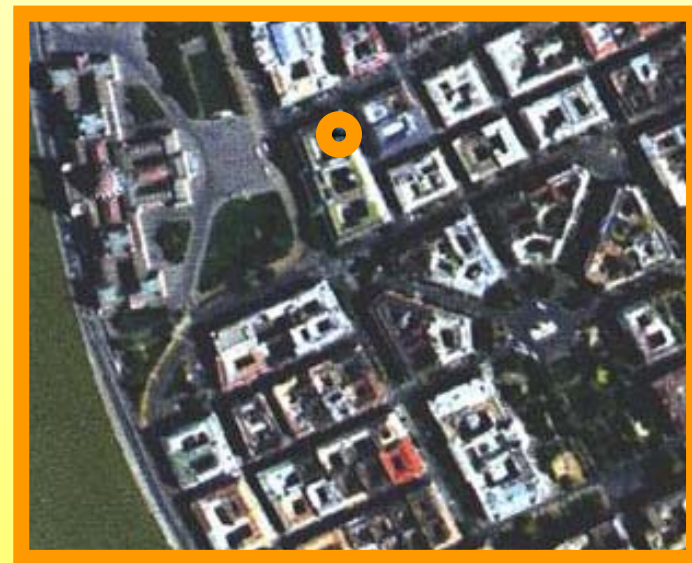


LAND-RELATED KNOWLEDGE MANAGEMENT

Target Areas, Results and Experiences

Dr. Gábor Remetey-Fülöpp, Senior Counsellor

Department of Geoinformation,
Main Department of Land Administration and Geoinformation,
Ministry of Agriculture and Rural Development





Land in Hungary

is a
social
economical
ecological
and
emotional issue

Quality of Land Management

has

social
economical
ecological
and
emotional impact

KM: tool to improve LA operations and LM



Content

KM in the context of DLAG/MoARD

Improving organisational capabilities and capacity building

Targeted areas :

- **Development of human resources**
- **ICT developments**
- **Institution building (Land Consolidation, Land Market)**
- **Institution building (EU Accession)**
- **Transition/New challenges: NSDI/INSPIRE**

KM in the context of DLAG/MoARD



Identifying and capturing knowledge, know-how, expertise and other intellectual capital via R+TD, learning by best practices +

- via bilateral co-operations
Swiss, German, Dutch, Austrian, WorldBank
- via multilateral co-operations
UNECE WPLA, FAO
- via activities in EU institutions and organisations
e.g. PCC, EuroGeographics, EUROGI, AGILE
- via networking (domestic, regional)
HUNAGI, CELK
- via other activities in global dimension
FIG, ISPRS, GSDI, GEO, ISDE



Content

KM in the context of DLAG/MoARD

Improving organisational capabilities and capacity building

Targeted areas :

- **Development of human resources**
- **ICT developments**
- **Institution building (Land Consolidation, Land Market)**
- **Institution building (EU Accession)**
- **Transition/New challenges: NSDI/INSPIRE**



Target area: Land Market, land consolidation



Reasons:

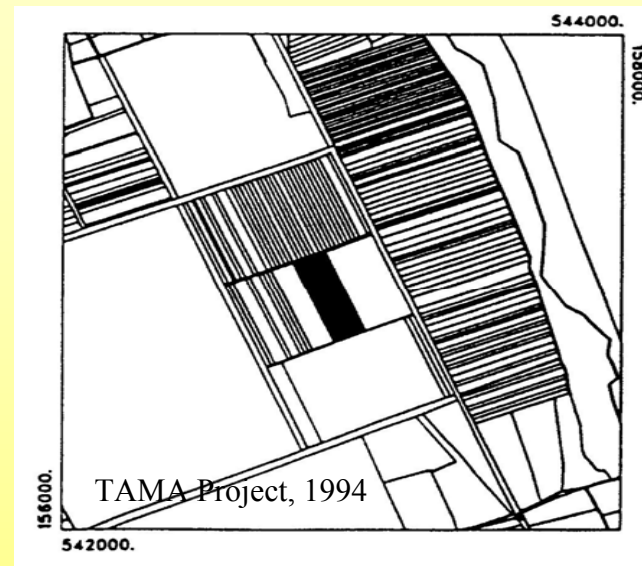
large-scale land compensation and land privatisation

Negative impact:

social, economical and ecological, hampering the viability and competitiveness of family farming

Major goal:

Improve the living conditions in the rural areas



Approach (TAMA, TALC)

- Identify stakeholders, select applicable methodology and implement pilots.
- Knowledge and know-how transfer related to the German model.
- Extension to microregion environment. Support of legislation review
- Involvement of the LON and local Microregion RuralDev managers
- Transformation into postgraduate course curricula (GEO)
- TALC extra: on-site trainings, multisectoral core team, high level discussions with active involvement of top MoARD civil servants, NL experiences, prep of pilots, contribution to the NLC Strategy (elaborated by AKI and GEO)

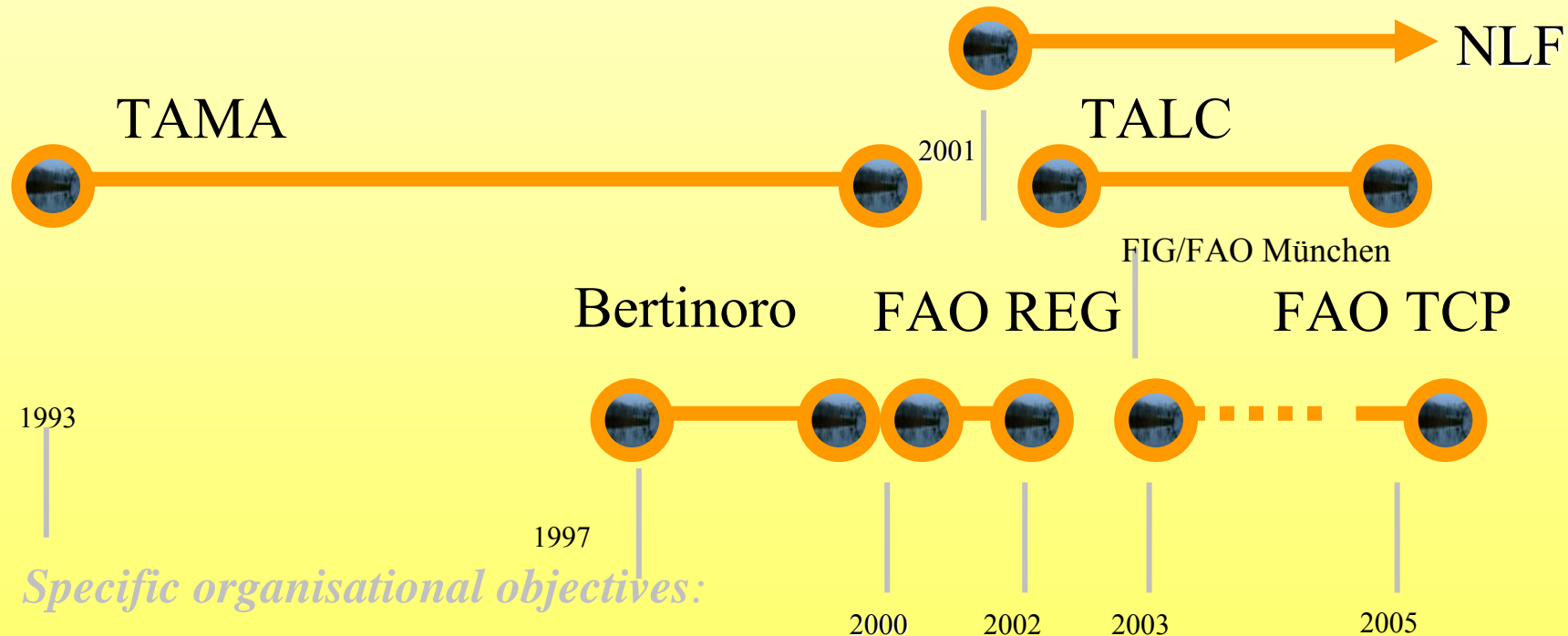


KM in the context of DLAG/MoARD

Aim: Improving organisational capabilities and capacity building

Targeted area:

Institution building (Land Consolidation, Land Tenure)



Specific organisational objectives:

competitive farmin, viable rural livelihood, SD

improve land tenure policy

identify stakeholders, knowledge transfer

Land-related Knowledge Management –
Results and Experiences

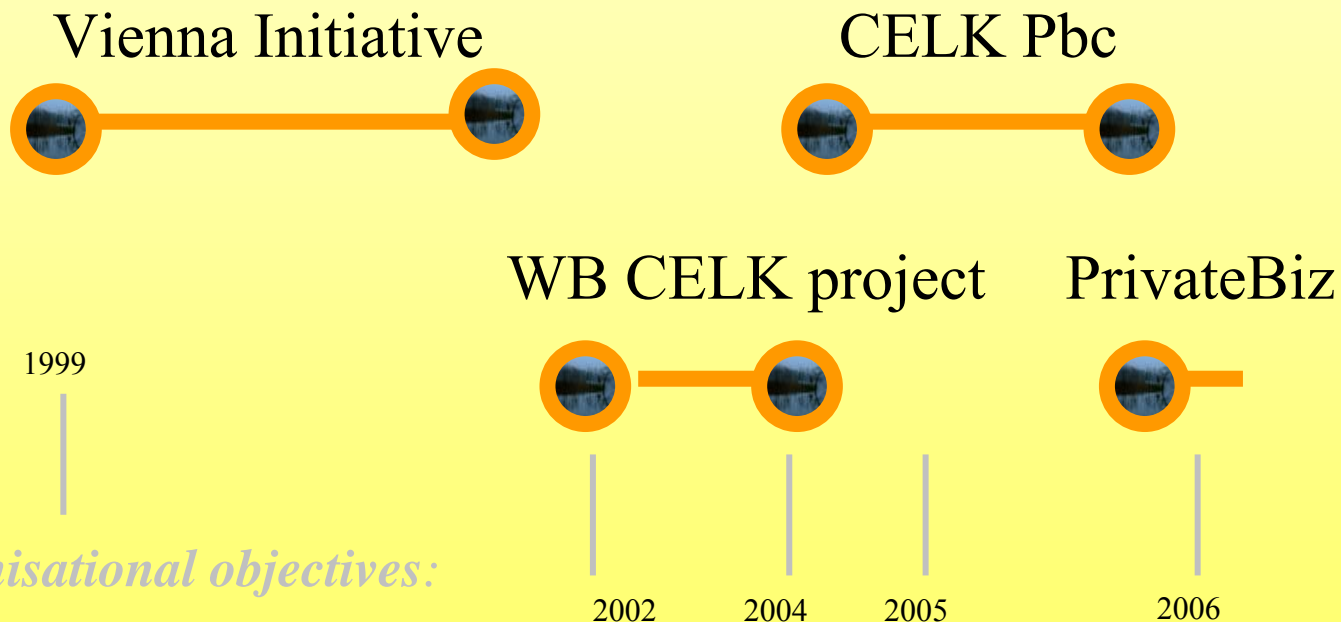


KM in the context of DLAG/MoARD

Aim: Improving organisational capabilities and capacity building

Targeted area:

Institution building (Land Market)



Specific organisational objectives:

MoARD project funded by TheWorldBank „CELK”



ongoing projects in more than 20 countries
cross fertilizing via fora & networking



Property rights and land market development a hot issue in
the EU Accession, Candidate & West Balkan Countries

Adequate property rights legislation and monitoring of the
changes: a key challenge in the transition process



CELK Center



- MoARD proposal to create and host a network in the region
- World Bank IDF support for 2 years
- FAO HQ and MoARD financial and in-kind support
- Regional Center and Network of Excellence
 - Knowledge management via dissemination of relevant information
 - Contributing to improved coordination, co-operation and networking
- WB Project launch in February 2003
- WB Project closed in early 2005 with excellent WB evaluation
- CELK Pbc established in 2004 but MoARD financial support stopped in Summer 2005



CELK Center

Activities



Land-related Knowledge Management –
Results and Experiences

CELK Center Partners and beneficiaries



Land-related Knowledge Management –
Results and Experiences

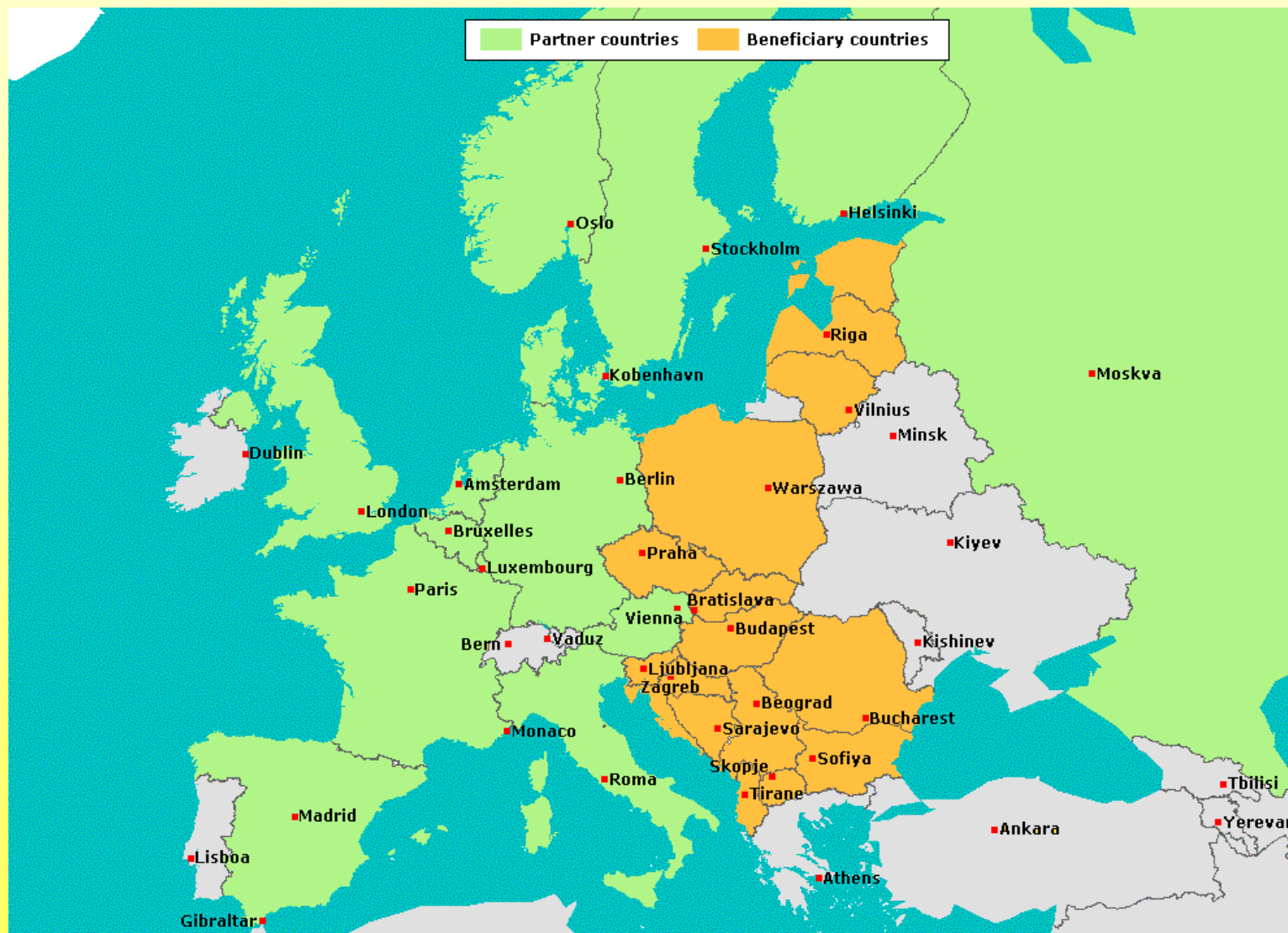


FIG - GEO - HSSMRS

Workshop on eGovernance, Knowledge Management and eLearning
Budapest, 27-29 April, 2006

CELK Center Achievements



- International acknowledgement (Center of Excellence)
- Clear structure, having strong support from professionals Europewide
- Good visibility, dynamic staff, managed by strong leadership
- Special country reports
- Opportunities for visiting experts
- Data/contact collection
- Building a Meta database
- Transmitting guidelines and relevant documents to beneficiaries
- Promotion of relevant EC activities, awareness raising
- Research for best practices, relevant projects, results
- Organizing workshops, conferences, country-days
- Website attracting growing number of visitors
- Special search engine with advanced fingertip method
- Issuing content-rich Newsletters
- Extension to new countries
- Flexible portfolio shaping
- Expert in grant application



Land-related Knowledge Management –
Results and Experiences



Content

KM in the context of DLAG/MoARD

Improving organisational capabilities and capacity building

Targeted areas :

- **Development of human resources**
- **ICT developments**
- **Institution building (Land Consolidation, Land Market)**
- **Institution building (EU Accession)**
- **Transition/New challenges: NSDI/INSPIRE**

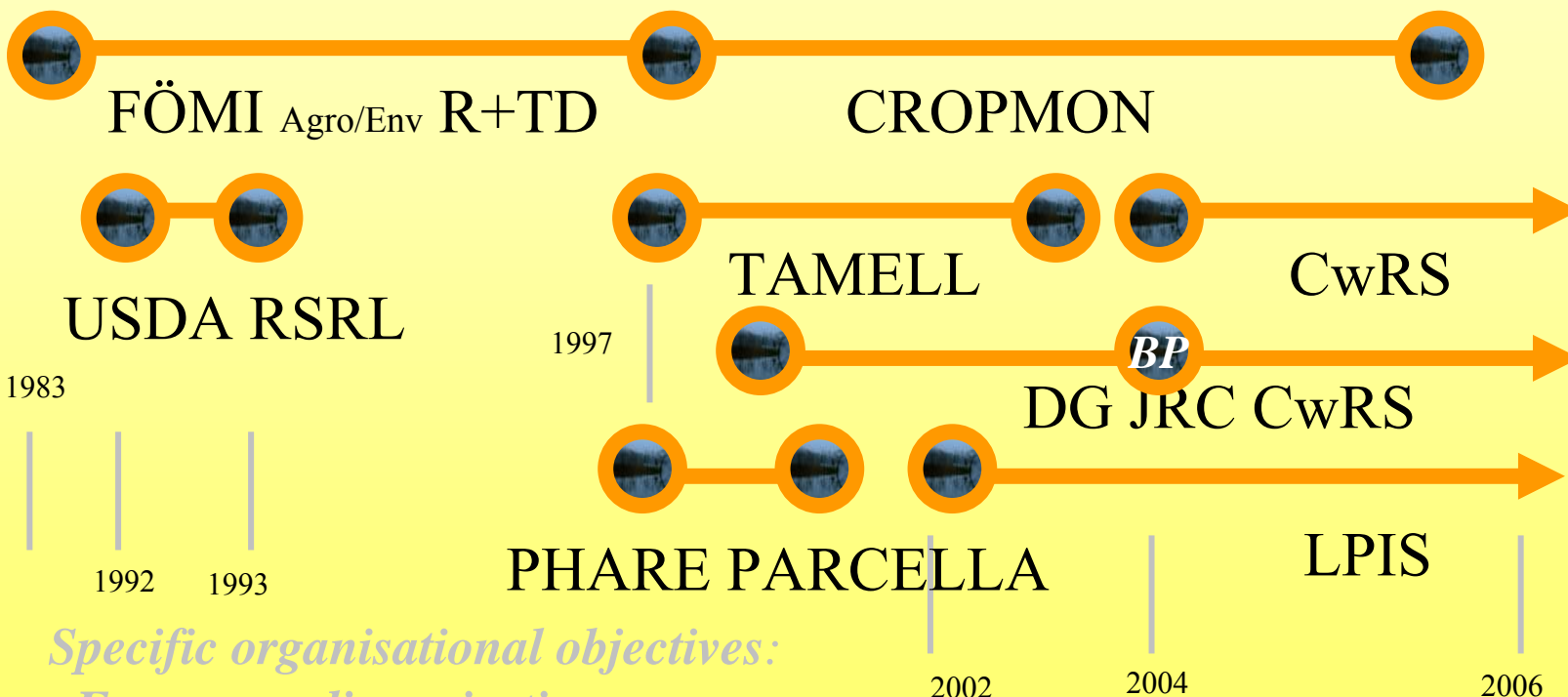


KM in the context of DLAG/MoARD

Aim: Improving organisational capabilities and capacity building

Targeted area:

Institution building at FÖMI (EU Accession – e.g. IACS)



Specific organisational objectives:

Ensure readiness in-time

Competitive advantages

Improved performance

Land-related Knowledge Management –
Results and Experiences

LPIS MULTIPURPOSE APPLICABILITY:

LAND USE vs LAND OWNERSHIP



FÖMI RSC, 2002

2001
state farms 17,8%
co-ops 6,3%
private 75,9%
@0,3-5ha 1,3M

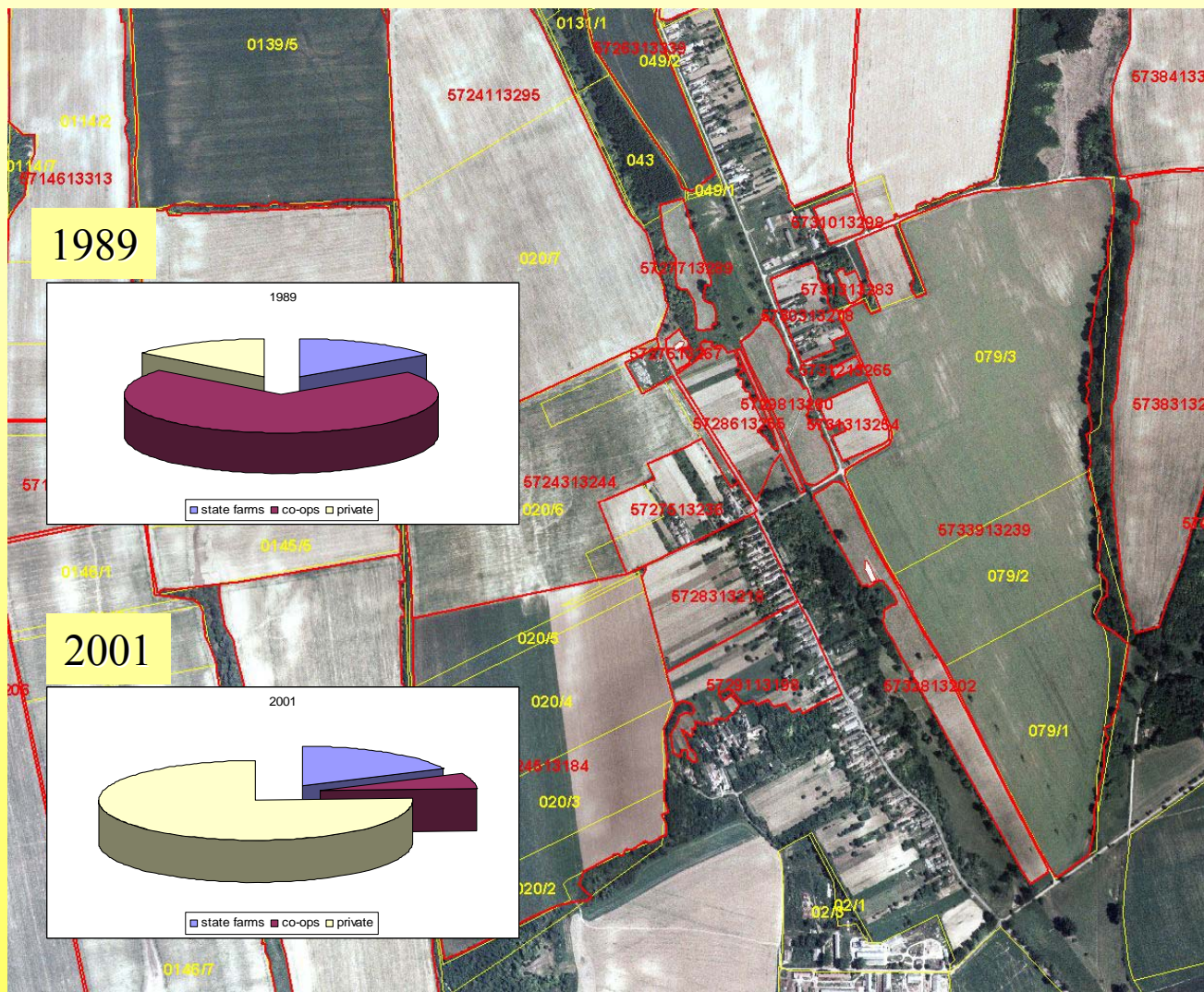


FIG - GEO - HSSMRS

Workshop on eGovernance, Knowledge Management and eLearning
Budapest, 27-29 April, 2006



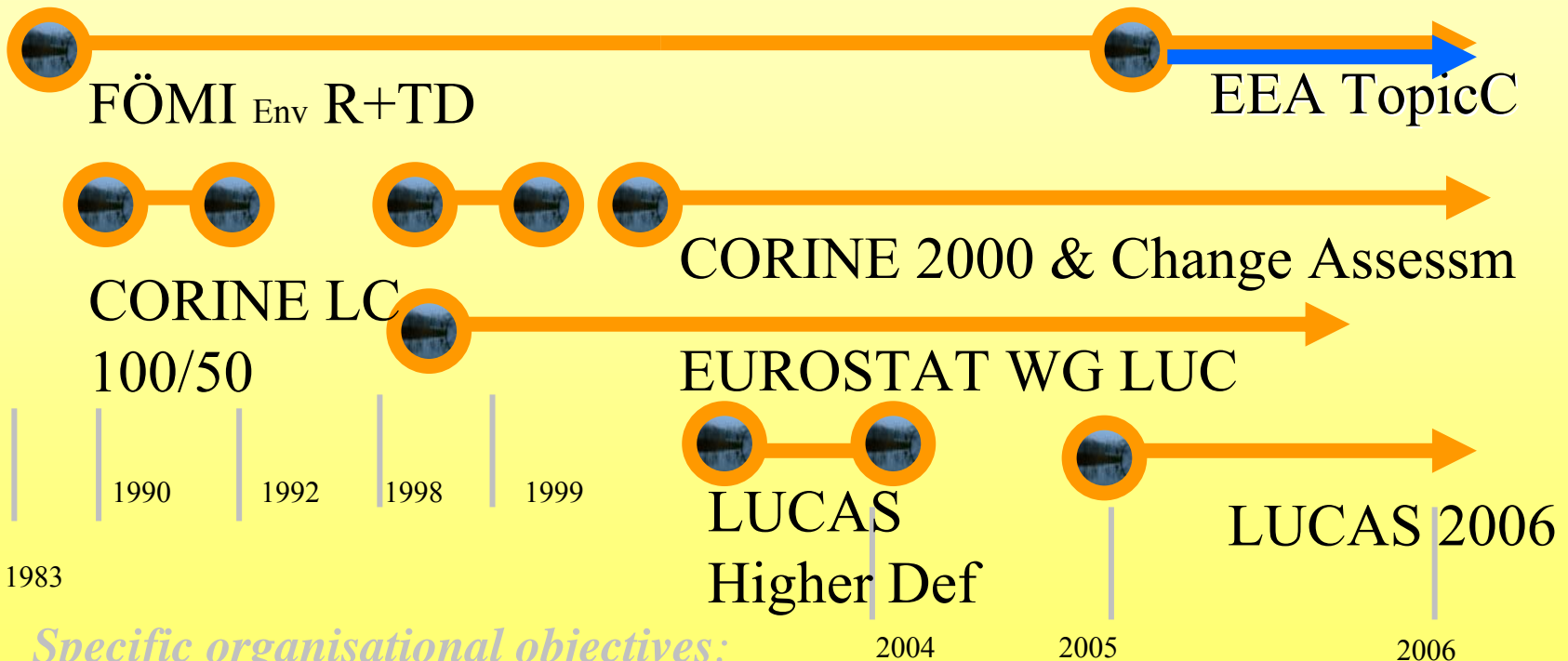


KM in the context of DLAG/MoARD

Aim: Improving organisational capabilities and capacity building

Targeted area:

Institution building at FÖMI (EU Accession – e.g. LUC)



Specific organisational objectives:

Improved performance in reporting

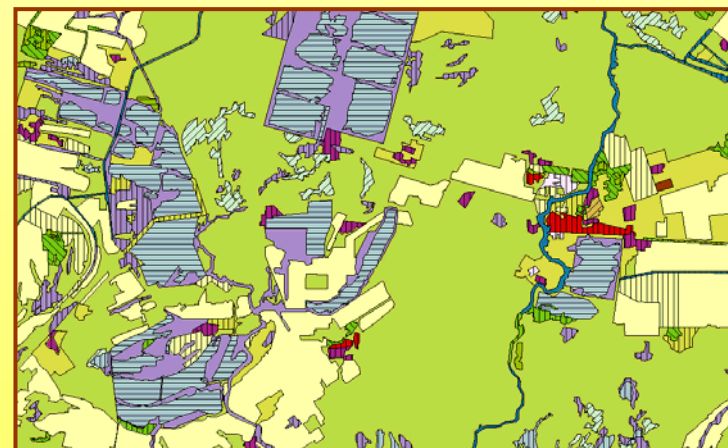
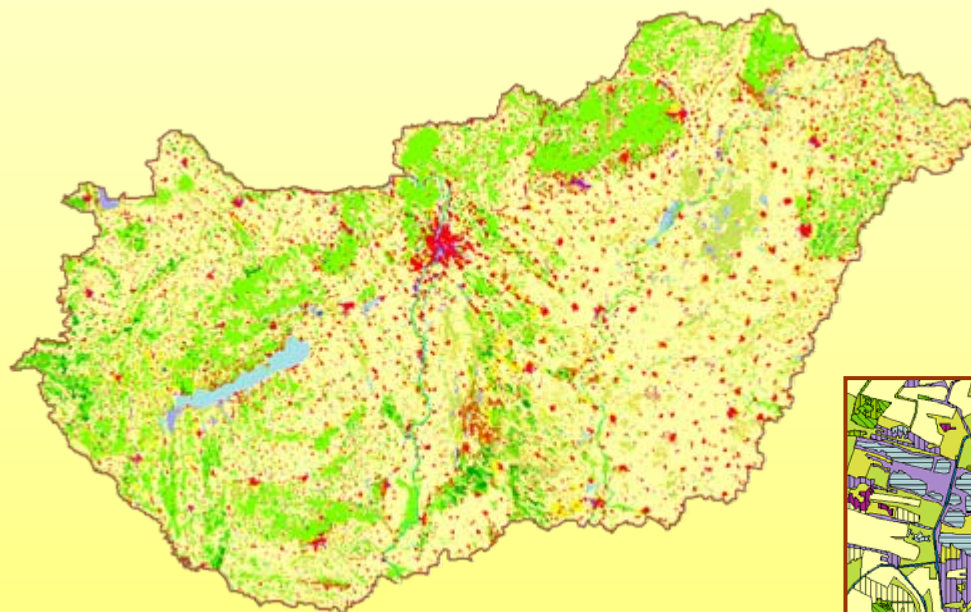
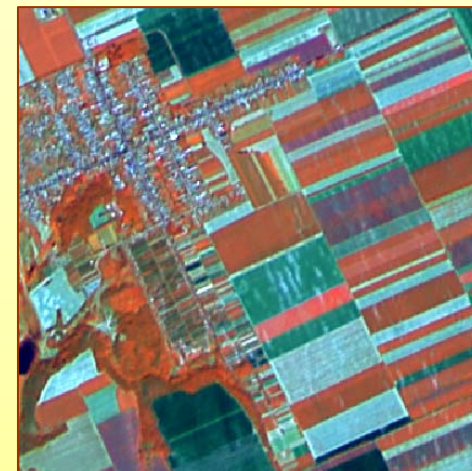
Useability also on national level

Land-related Knowledge Management – Results and Experiences



LAND COVER DATABASE

INVALUABLE ASSETS FOR THE FUTURE



FÖMI RSC, 1992-2002

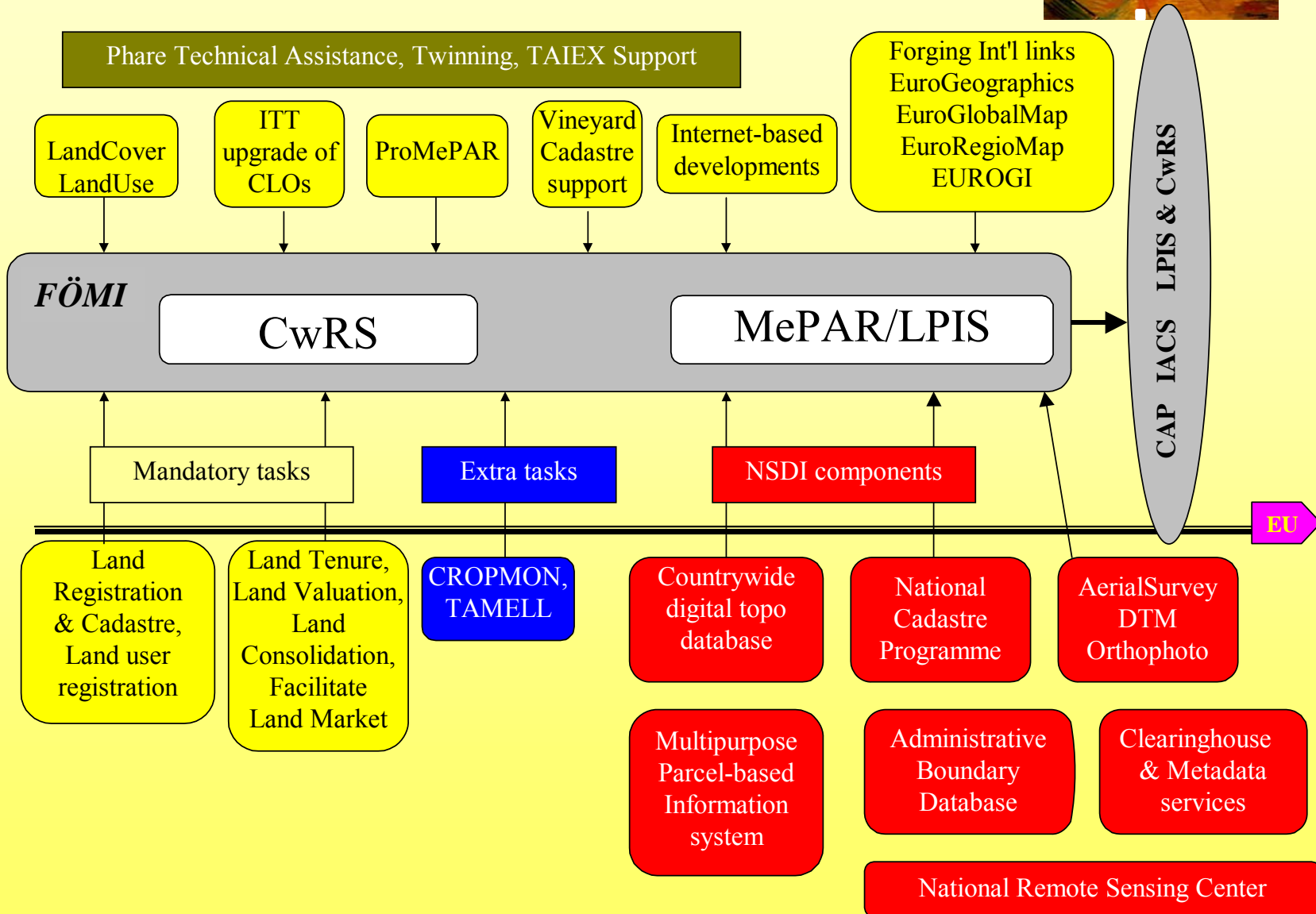




THE LANDS AND MAPPING SEGMENT NPAA 1998-2004 FOR EU ACCESSION



Land-related Knowledge Management –
Results and Experiences





Content

KM in the context of DLAG/MoARD

Improving organisational capabilities and capacity building

Targeted areas :

- **Development of human resources**
- **ICT developments**
- **Institution building (Land Consolidation, Land Market)**
- **Institution building (EU Accession)**
- **Transition/New challenges: NSDI/INSPIRE**

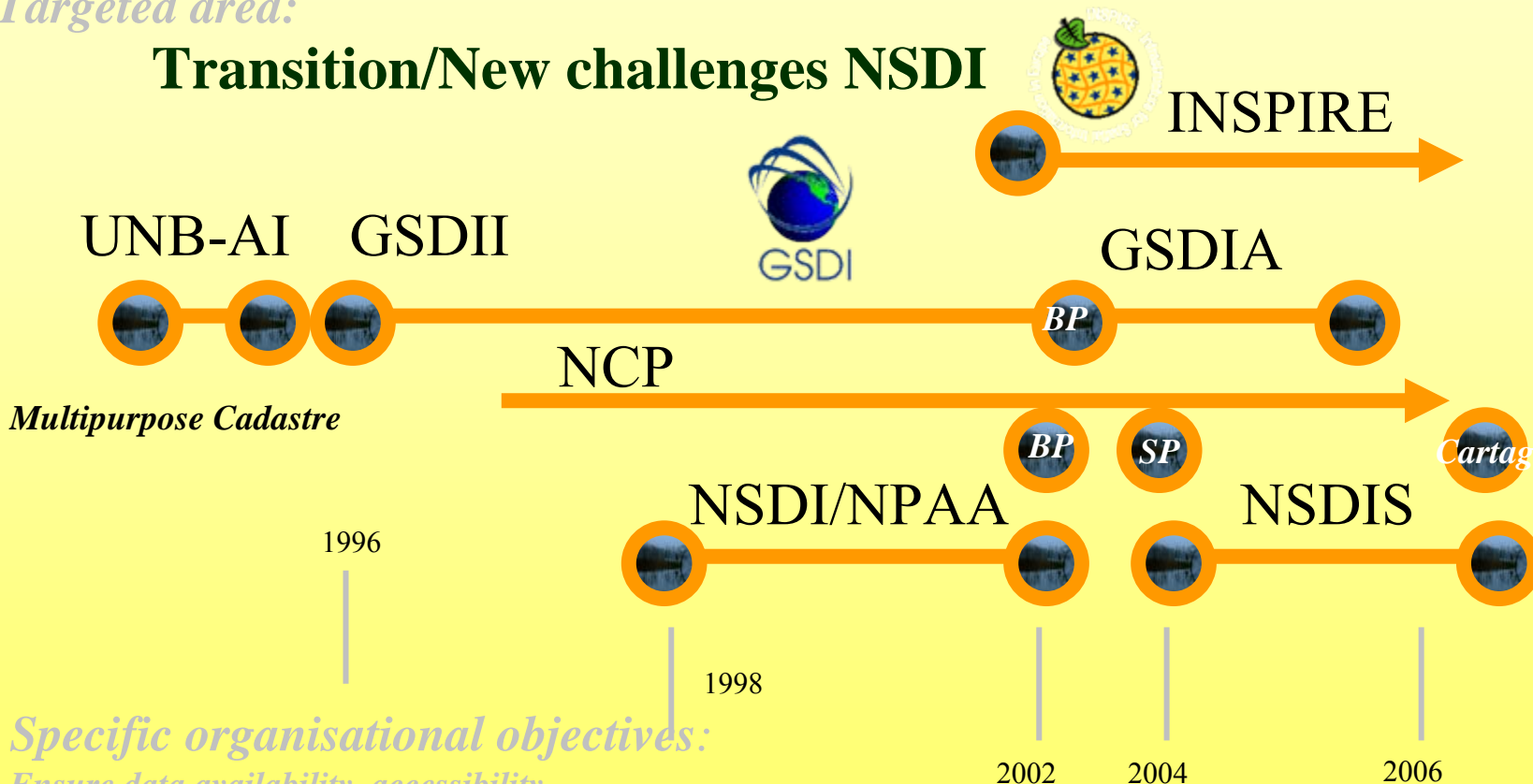


KM in the context of DLAG/MoARD

Aim: Improving organisational capabilities and capacity building

Targeted area:

Transition/New challenges NSDI



Specific organisational objectives:

Ensure data availability, accessibility, useability and interoperability according to the INSPIRE directive (2007)

Land-related Knowledge Management – Results and Experiences

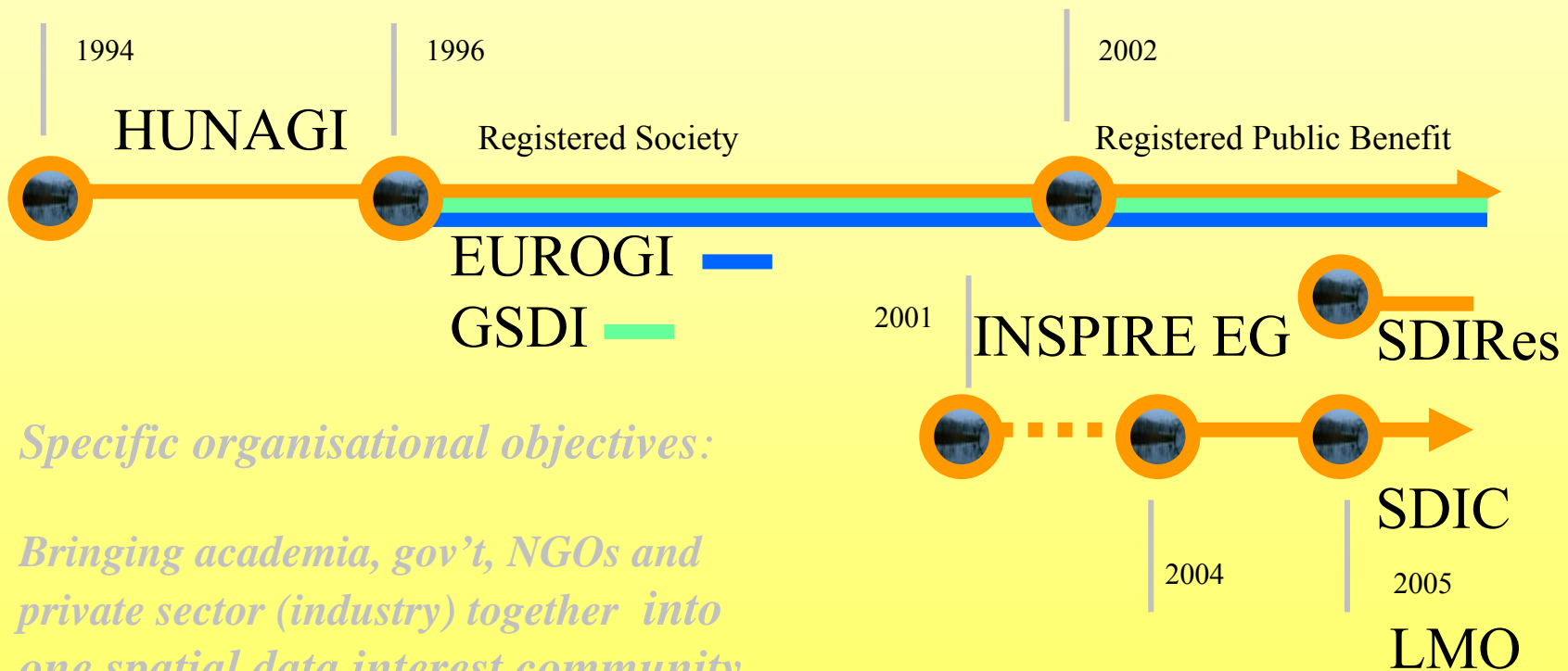


KM in the context of DLAG/MoARD

Aim: Improving organisational capabilities and capacity building

Targeted area:

Networking (Domestic, interdisciplinary, horizontal)



Specific organisational objectives:

Bringing academia, gov't, NGOs and private sector (industry) together into one spatial data interest community

Land-related Knowledge Management – Results and Experiences

DOMESTIC HORIZONTAL NETWORKING

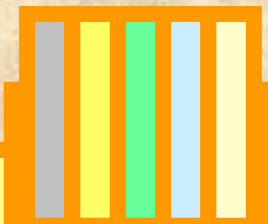
- Web-based access to knowledge repositories
- Web-based access to top digital libraries
- Web-based access to research agendas (e.g. global warming)
- Interactive thematic blogs according to NSDIS topics etc
- Hot topics such as PSI, INSPIRE, GMES, Galileo, GEO



KNOWLEDGE TRANSFER

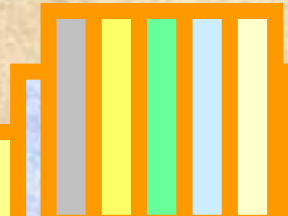


Disciplines



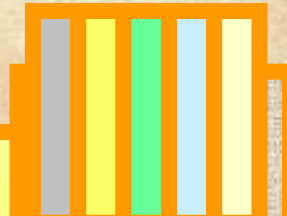
Academia
(20)

Sectors



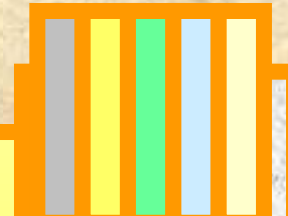
Govm't
(45)

Disciplines



NGOs
(10)

Profiles



Private Sector
(34)

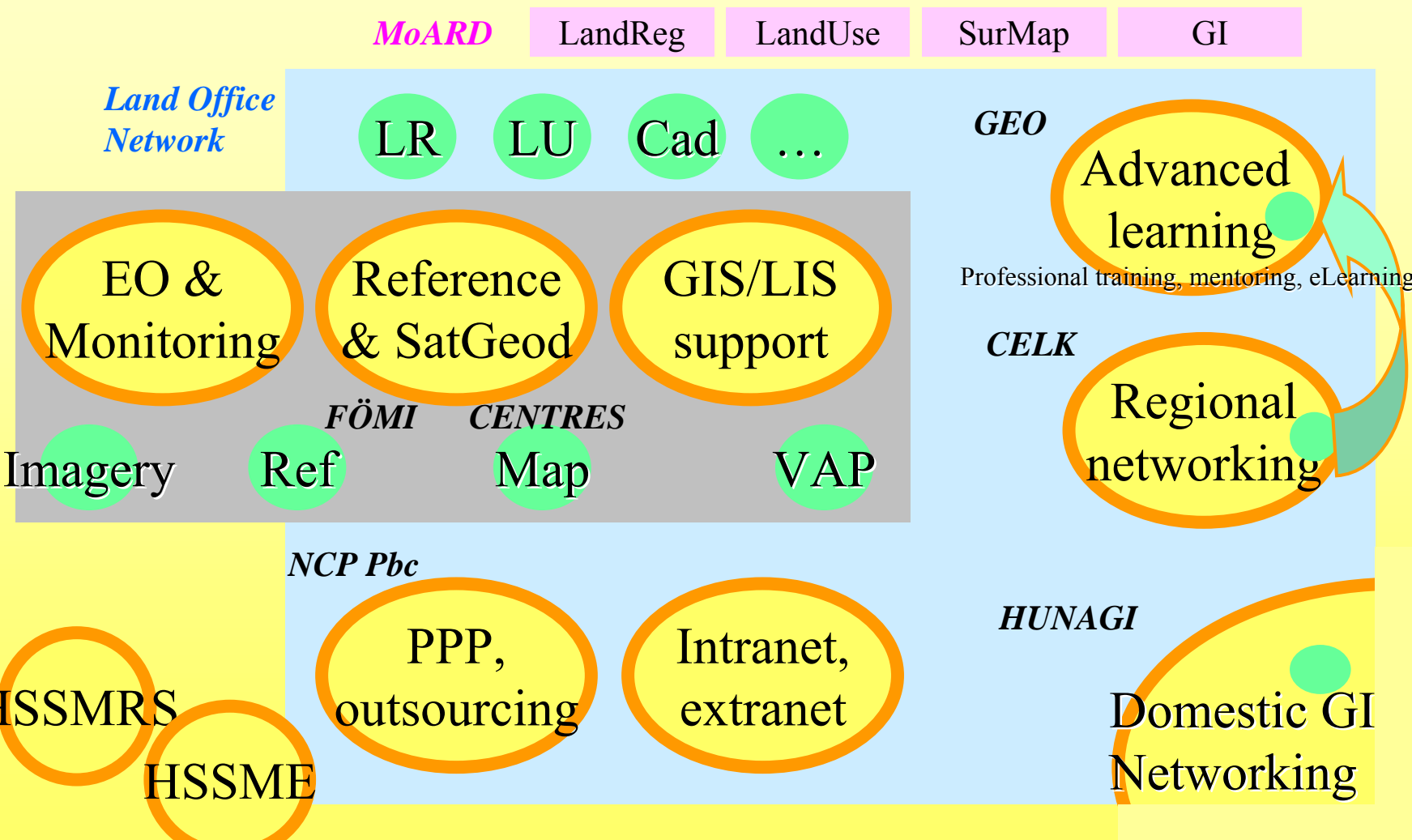
Land-related Knowledge Management –
Results and Experiences

CONCLUSION 1/2

Knowledge centres around the Land Administration and depositories



Land-related Knowledge Management – Results and Experiences



CONCLUSION 2/2



KM supports, improves, facilitates and enables
Gov'tal Policies (Land management, e-Gov, EU)
New Legislation, Strategies
Capacity building and organisational capabilities
R+TD and innovation
Knowing lessons to be learned



KM helps to realise and verify the vital role of
Land Administration **in the Information Society**
Land related information: pillar for NSDI for multipurpose use

All need agreed strategy and coordination for
planning, implementation and control in line with
INSPIRE as well as co-operation, collaboration in
the European Economic Area and beyond



Acknowledgements

TAMA

DR W D KNEIB, DR P RIEGLER

TALC

H.MOEN, G.APAGYI

CELK

M.PÓSFAL, F.REMBOLD

SDI

DR S. MIHÁLY, D.SZENDRŐ



Thank You for your attention !