

May. 19, 2007

Introduction to

Korea Cadastral Survey Corp. (KCSC)



Contents

- Survey System in Korea
- The History of KCSC
- Vision & Major Business
- Equipments
- Manpower and Organisation
- Cadastral Education Institute
- Cadastral Research Institute
- International Cooperation
- Conclusions

□. Survey System in Korea

- **Cadastral survey**

- Register the parcel into cadastral register and map
- Construction cadastral boundary on the ground
- Cadastral control point in surveying

- **Geodetic survey**

- Geodetic surveying for national coordinate system
- Precise leveling and gravity surveying
- Topographic map production

Survey System in Korea

- Cadastral Survey & Geodetic Survey

Classification	Cadastral Survey	Geodetic Survey
Related Law	Cadastre ACT	Surveying ACT
Objective	Registration and Publicity	Correct geodetic Positioning
Administration Body	MOGAHA(Cadastral Team)	MOCT(NGI)
Implementation Org.	- Special Corporation KCSC - Private Company	- NGI - Private Company
Type of Survey	- Subdivision Survey - Cadastral Boundary Survey	Geodetic Survey
License	Cadastral Surveyor	Geoinformation Surveyor

□ The History of KCSC

- **1938 : Establishment of Chosun Cadastral Association**
 - **1949 : Foundation of training Institute for cadastral surveyors**
 - **1977 : Changed to the current KCSC**
 - **2004 : Changed a legal status as special corporation**
 - **2005 : Founded of Cadastral Research Institute**
- 

□. Vision & Major Business

- **Vision**

Customer-Oriented Corporation Supplying Digital Cadastral Info.

- **Major business**

- Providing a wide range of cadastral survey services
- Supplying digital cadastral information and GPS CORS data
- Performing overseas projects & promoting global cooperation
- Educating & Training cadastral surveyors
- Conducting R/D for improving cadastral systems & technologies

□. Equipments

● Surveying equipments

- GPS :	200
- Total Station	1,029
- Rugged Laptop	940
- EDM	1,103
- Plotter(A0)	330
- Mobile GPS Vehicle	



● IT equipments

- Personal Computer	3,989
- Sever Computer	243
- Precise Scanner(A1)	20



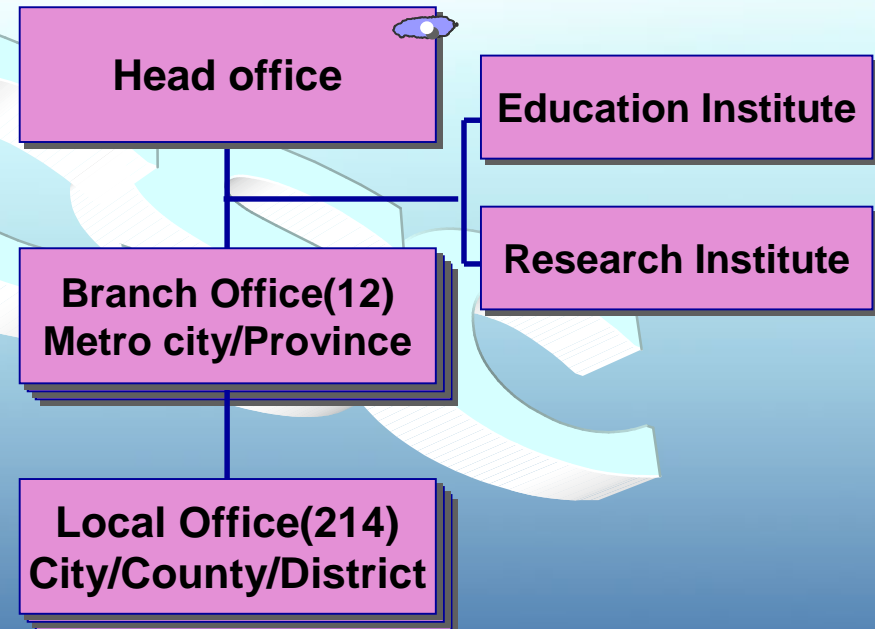
□. Organisation & Manpower

● Organization

- 1 Main office in Seoul
- 12 Branch offices in provincial level
- 214 Local offices in municipal level
- Cadastral Education Institute
- Cadastral Research Institute

● Manpower

- 3,600 cadastral surveyors
- 200 Office Workers, IT engineers, researchers, etc.



□. Cadastral Education Institute

- Objective

- Education and training cadastral surveyors

- Organisation



. Currently 24 staffs is working (including faculty)

- Number of Trainee per year

- Off line (gathering) training : 31courses(3,948)
- On line (cyber) training : 72 courses(3,840)

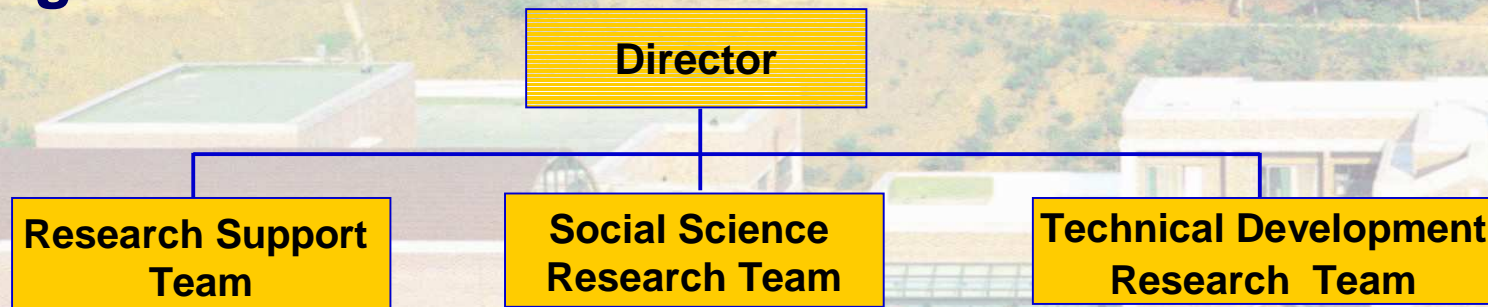


□. Cadastral Research Institute

- **Objective**

- Cadastral System Improvement & Cadastral Surveying Technology Development

- **Organisation**



Currently 30 staffs are working (including researchers)

- **Research subjects**

- Integration IT technology into cadastral surveying
- Improvement of cadastral ACT and guidelines
- Development of new business model

□. International Cooperation

● Overseas Projects

- Completed cadastral surveying for road construction in **Lao PDR**
- A pilot project for land registration in **Morocco** will be implemented in 2007 by Korea International Corporation Agency (KOICA)
- **Cambodian** Cadastre officers training program is scheduled in June 2007
- Cadastre expert dispatching project in **Azerbaijan** will be initiated in 2007

● International Cooperation

- FIG Activities
 - Hosted FIG Working Week 2001
 - hosting Annual Meeting Comm. 7, Currently

□. Conclusions

- **KCSC will dream a leader of Cadastral Survey Industry.**
- **KCSC will provide with best service to customer.**
- **KCSC will grow to be trust and satisfied by customer.**



**The Customer-Oriented Corporation
Supplying Digital Cadastral Information**



Thank you very much
for your attention!