

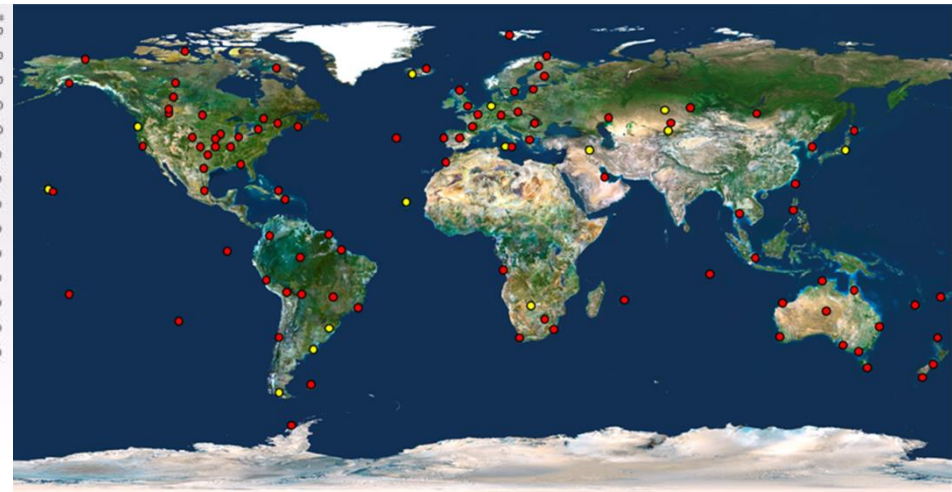
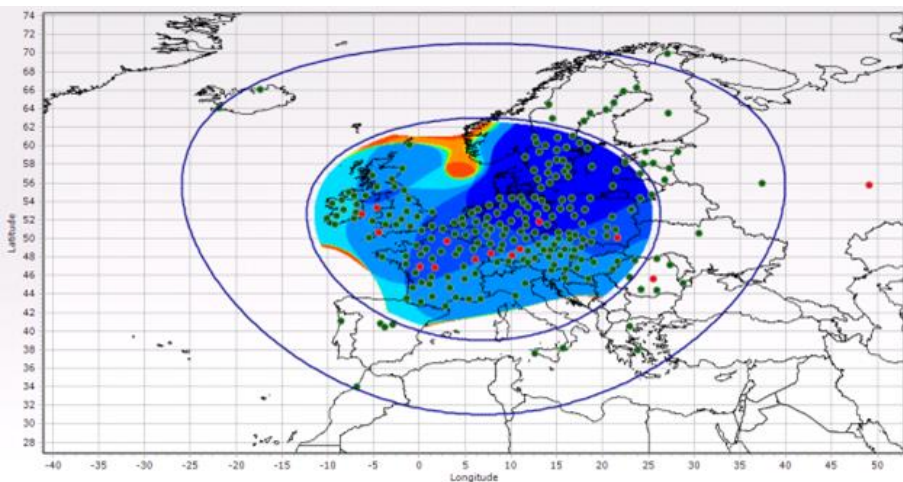
**After the dust settles**  
**Applications of Geospatial technology**



# Collection

## The Need – An accurate framework

- Option 1: Trimble's RTX network providing accurate positioning in a global reference frame
  - All reference stations continuously monitored for movement
  - Affected stations removed from network
  - Displacement verified and then re-inserted into the network
  - Enables positioning to within a few centimetres almost immediately after an event
  - Options for increased density for faster convergence and improved vertical



# Collection

## The need – An accurate framework

- Option 2: The establishment or re-survey of a VRS network
- Used as the framework post event for
  - Malaysian Tsunami - 2004
  - Hurricane Katrina - 2005
  - Sichuan Earthquake – 2008
  - Christchurch Earthquake - 2011



# Collection

## The need – Better understanding of crustal deformation

- Utilizing data from either permanently deployed geodetic networks or rapidly deployed new networks
- Recent examples:
  - Nepal
  - Haiti
  - Chile



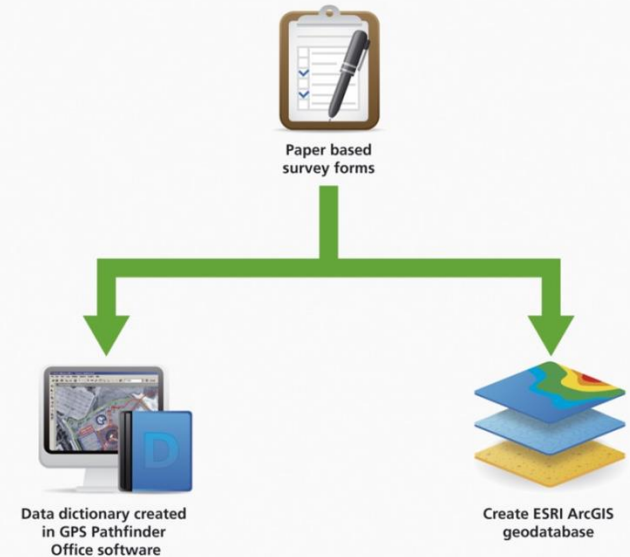
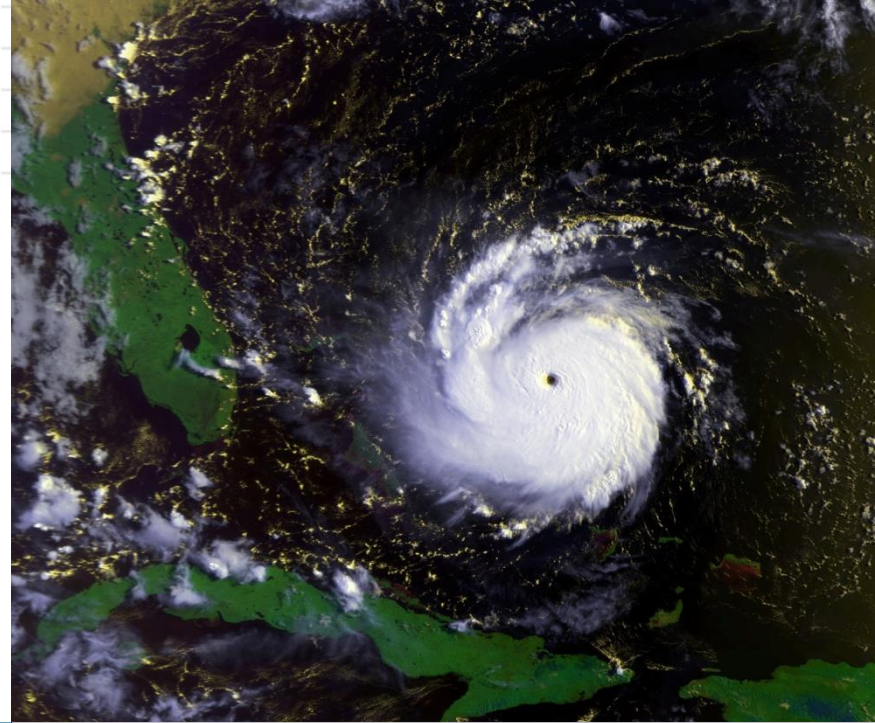
# Collection Damage assessment

- Oakland Fire - 1991
- Near real time mapping of fire fronts



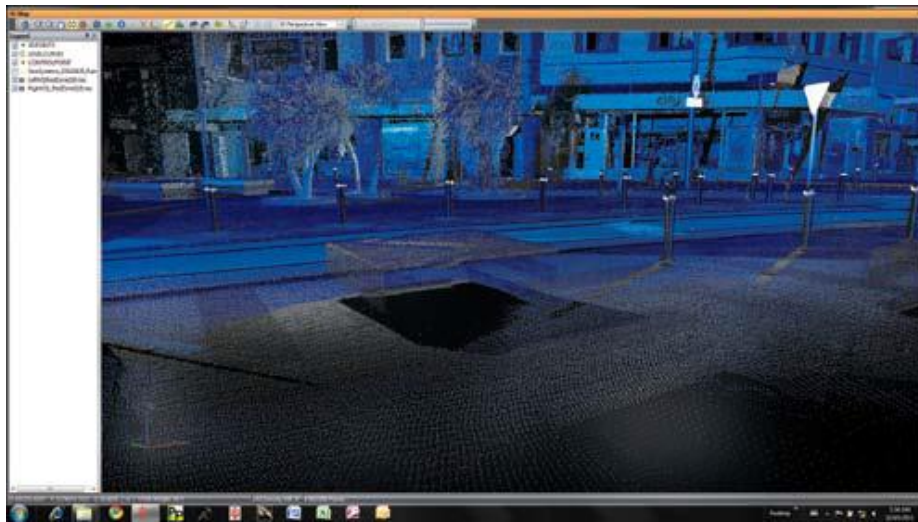
# Collection Damage assessment

- Hurricane Andrew – 1992
- Category 5 – 282 km/hr winds
- GPS mapping of damage



# Collection Damage assessment

- Mobile mapping to accurately record the current status
- Post quake in Christchurch the city centre was mapped in 2 days using mobile mapping





# Illegal Builds and Acute Shocks Affect Safety Cities Need to Assess Changes and Respond Quickly



One dead, 1,000 displaced in Cape Town shack fires

SOUTH AFRICA Sunday 25 May 2014 - 2:52pm





Cape Town

# Transforming UAS Imaging Data to Monitor Change and Respond to Emergency



**IMAGERY** | Trimble UX5

**ANALYSIS** | Trimble eCognition

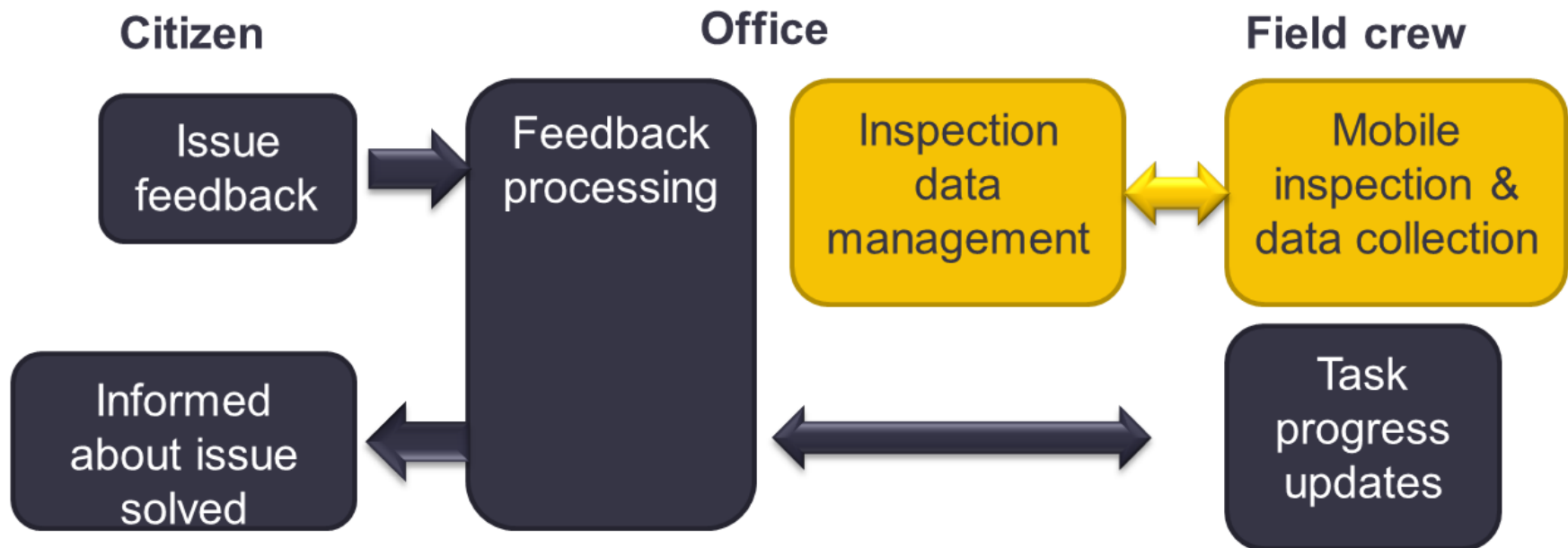
**RESPONSE** | Trimble Terraflex

# Collection Damage assessment

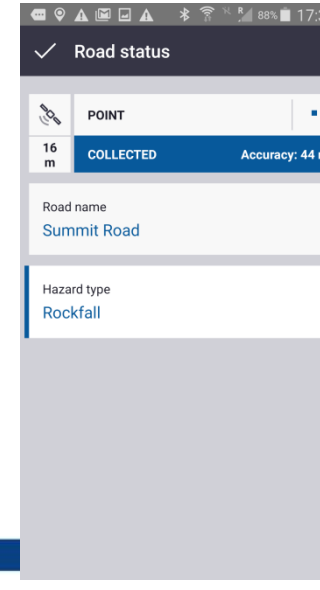
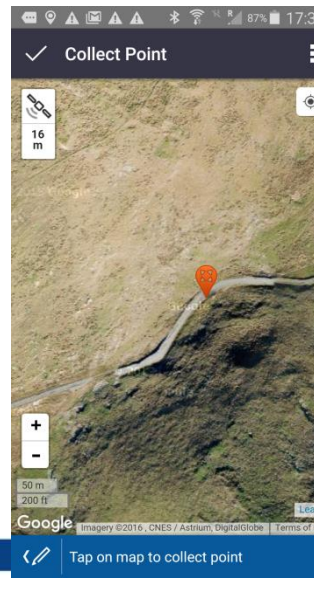
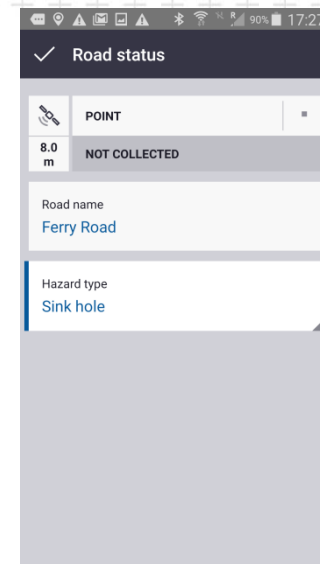
- Cloud based solutions leveraging mobile phones/tablets
  - Data hosted in the cloud –
    - provides redundancy for local network failures

Trimble Feedback

Trimble TerraFlex



# Collection Damage assessment



# Efficient Feedback process gives benefits

More information:



EFFICIENT FEEDBACK PROCESS

## BENEFITS OF EFFECTIVE FEEDBACK MANAGEMENT



- Improved levels of service
- Time and resource cost savings
- Informed decision making


# Collaboration Enabling the discussion

- Post earthquake the environment looks very different
- 3D city model created to enable discussions and communicate future plans
  - Built using SketchUp models from the 3D Warehouse



3D Warehouse

Municipal Chambers, Christchurch, New Zealand



Downloads	190
Likes	5
.skp File Size	2.3 MB
Polygons	180
Materials	14
Uploaded	6/6/08
Last Modified	3/22/14

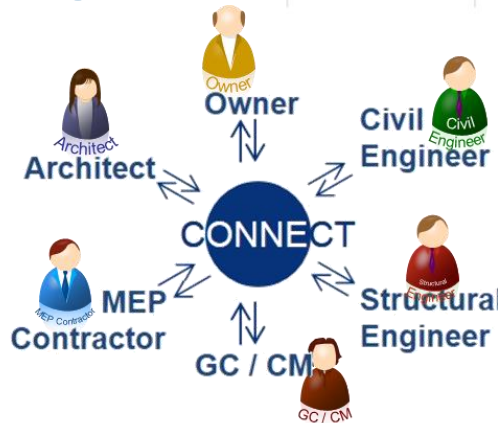
Share <> Embed

Tags

30113, 804405, Anne, Architect, Architecture, B01, Building, Chambers, Christchurch, city, council, Municipal, New Zealand, Oxford, Pivnice, Queen, Street, Tautahi, Terrace, Worcester, ZNO

# Collaboration Tools for improving the rebuild efficiency

- Lightweight
- Cloud based
- Easy to deploy
- Enables collaboration across disciplines and companies



**Trimble Connect**



# Implementation Re-levelling

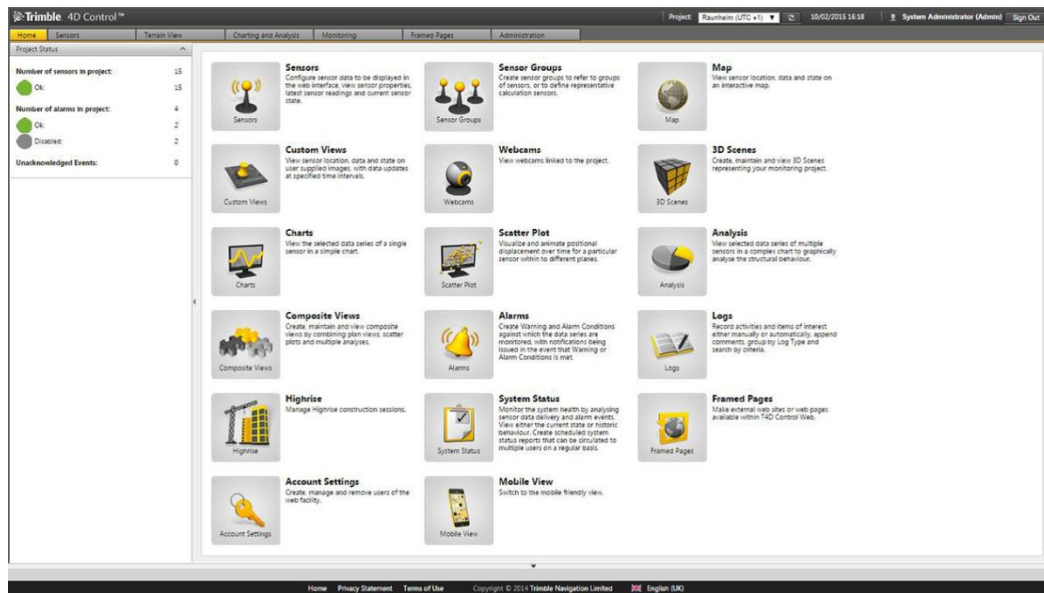
- Monitoring for precise building re-levelling
  - Trimble 4D control
- Christchurch Arts Centre





# Implementation Monitoring for the future

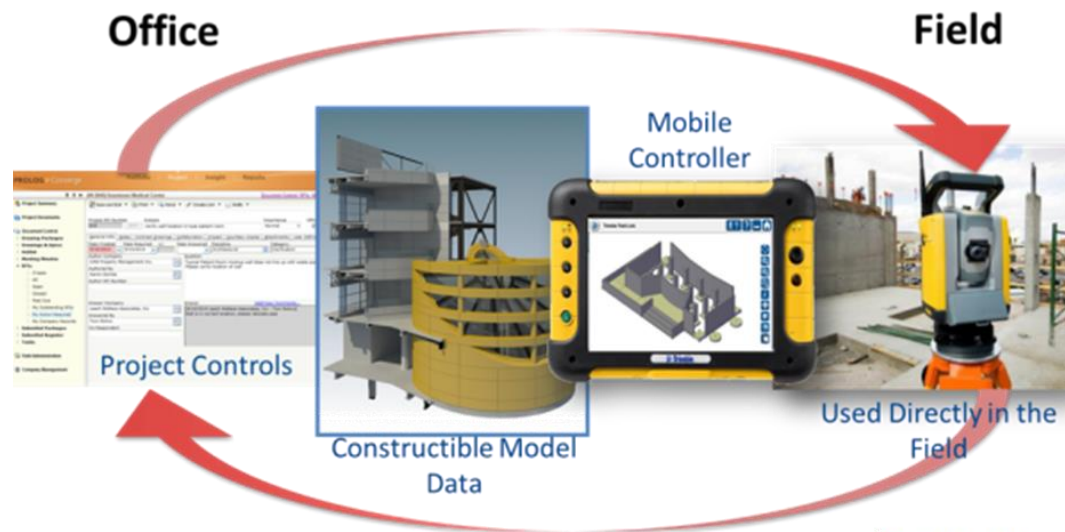
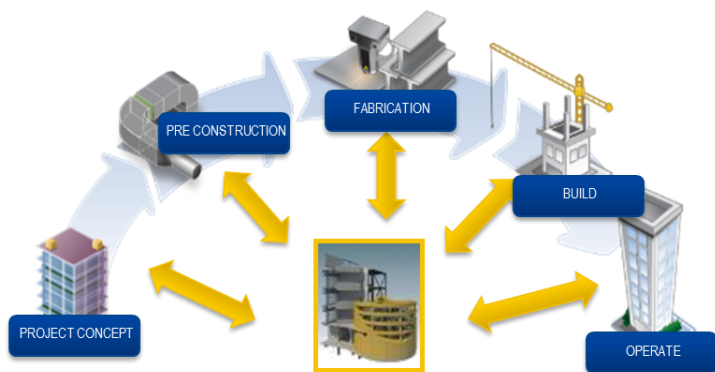
- Continuously monitored building
- Enables data driven decisions on re-occupation post event
- “Big data” can potentially aid emergency response



# Implementation

## Use of BIM to accelerate rebuild

- Efficient use of the 3D model
- Faster layout
- Less errors
- Less rework
- Example Justice Precinct





# Questions?

