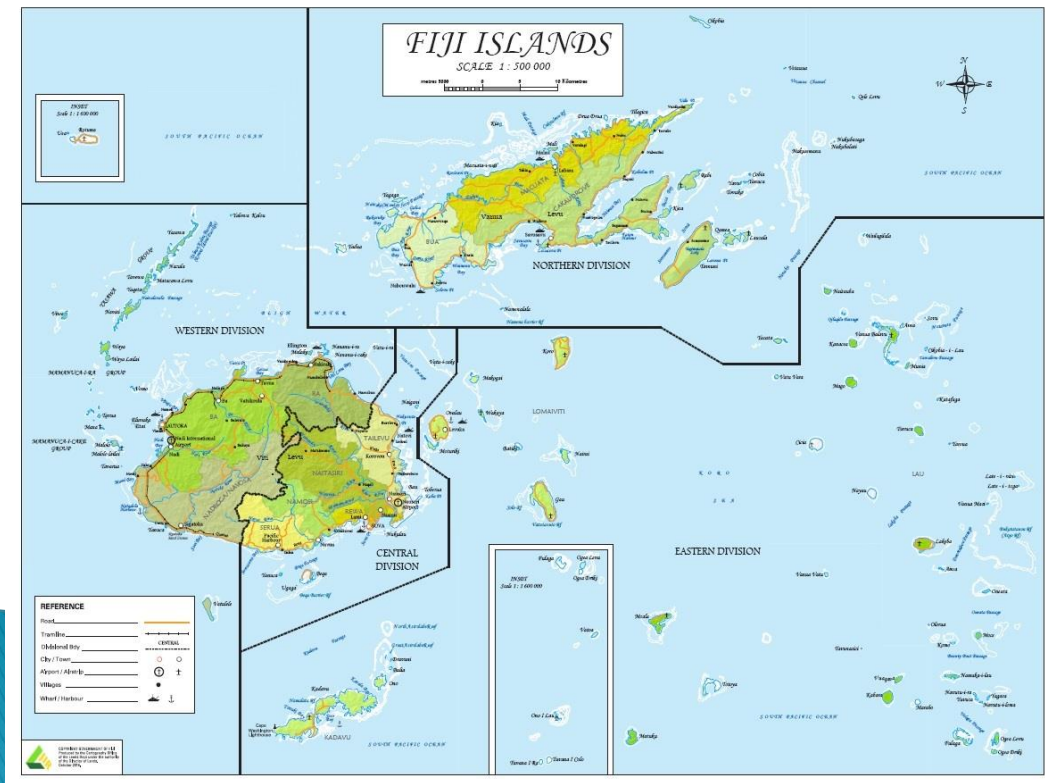


Connecting Fiji's Geospatial Information to Datum via GNSS CORS

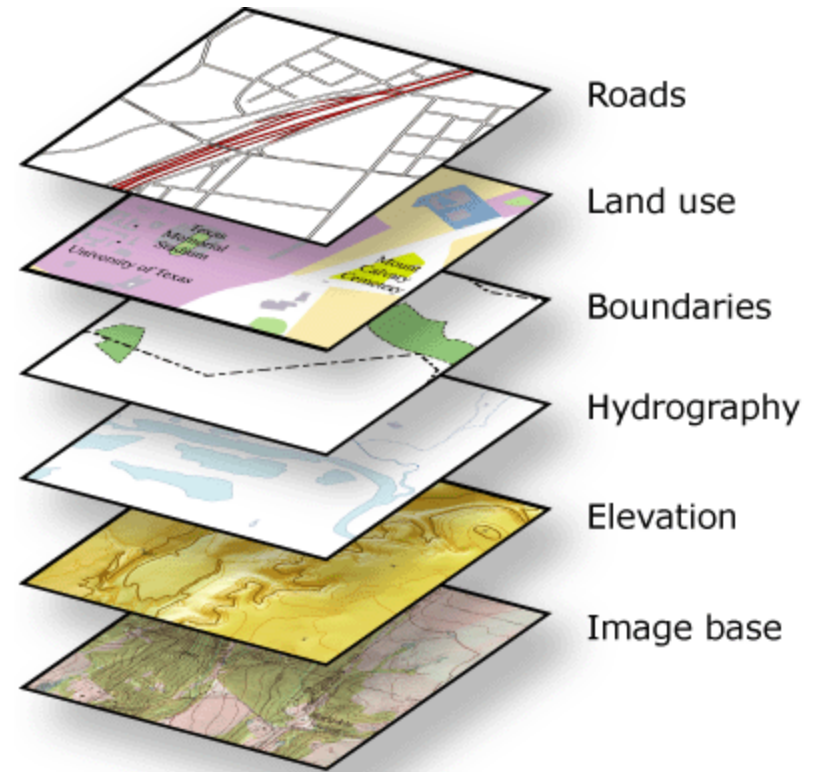


Presenter: Meizyanne Hicks

Connecting Fiji's Geospatial Information to Datum via GNSS CORS

Outline

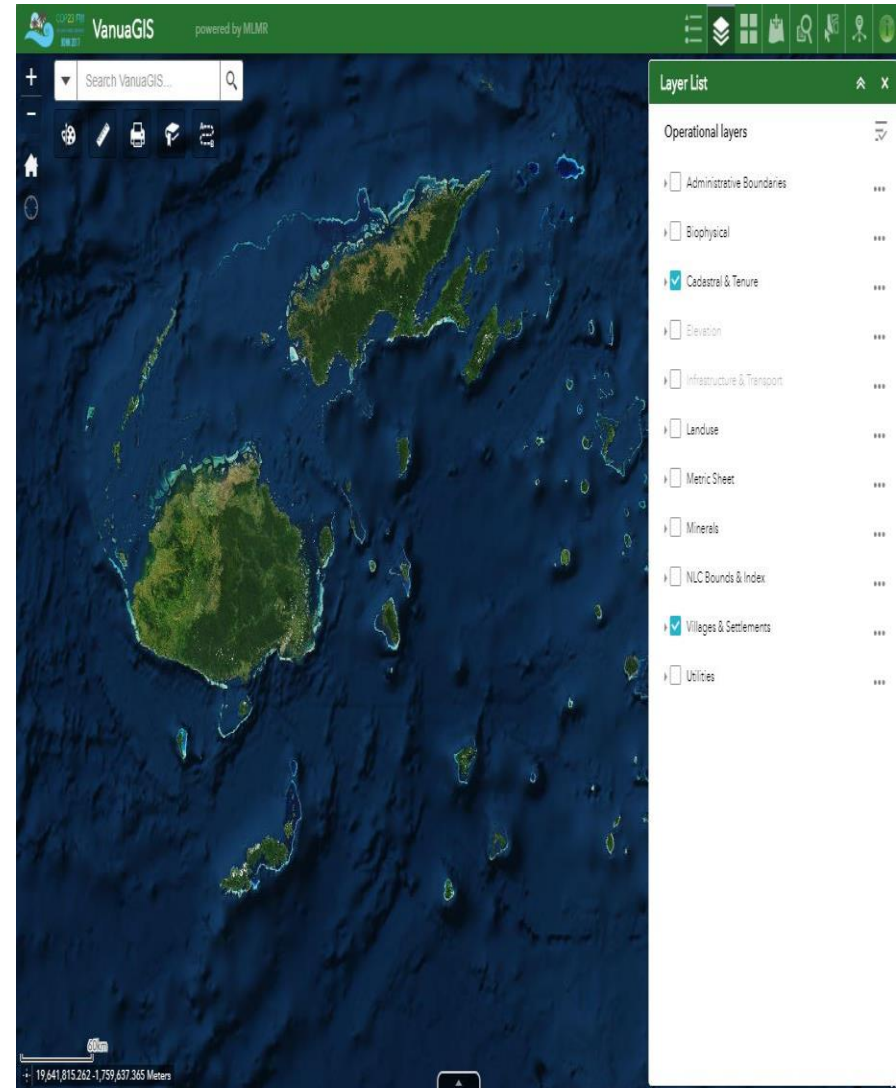
- ▶ Present Situation
- ▶ Looking to the Future
- ▶ Considerations



Connecting Fiji's Geospatial Information to Datum via GNSS CORS

Present Situation

- ▶ Geospatial data is tied to the Earth's surface.
- ▶ Fiji's Geospatial information captured based on WGS72



Connecting Fiji's Geospatial Information to Datum via GNSS CORS

Present Situation

- ▶ Geospatial information data sets:
 - Survey information
 - Topographic information
 - GPS data
 - Other
- ▶ National Geospatial Information Strategy (FGIMC)



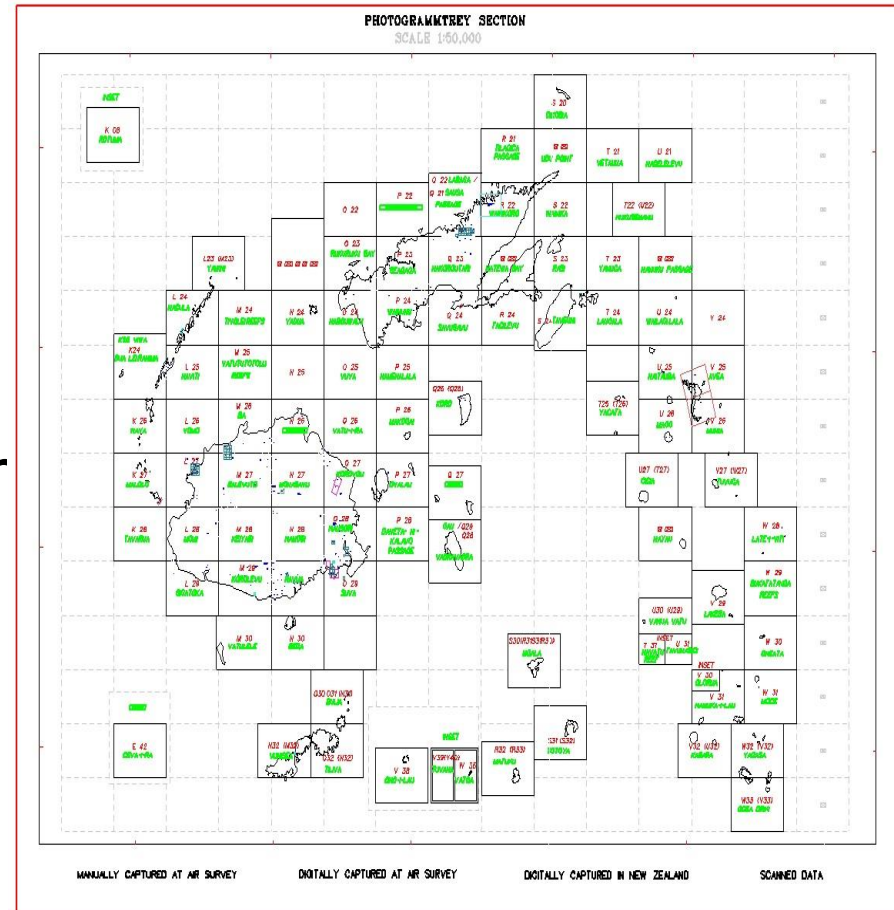
Fiji Geospatial Information Management Strategy

Output of the Fiji Geospatial Information Management Council

Connecting Fiji's Geospatial Information to Datum via GNSS CORS

Looking to the Future

- ▶ Need to update Fiji's national maps (1:10000 maps)
- ▶ Origin of coordinates for Fiji's topographic sheet index and surveys

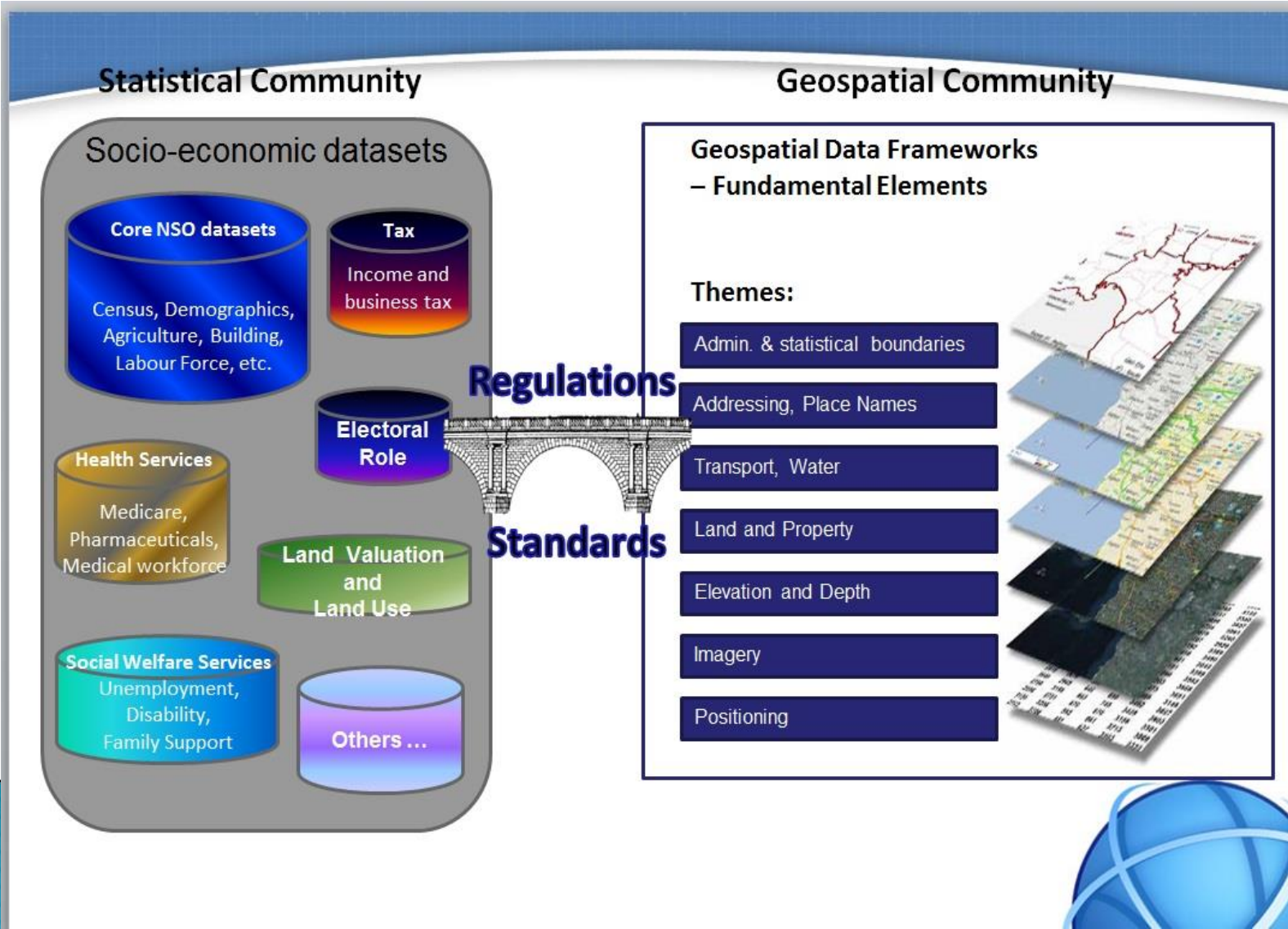


Connecting Fiji's Geospatial Information to Datum via GNSS CORS


Considerations

- ▶ National coordination of geospatial information across the country to actively collaborate to coordinate the collection, management and use of geospatial information
- ▶ Interoperability
 - *Access, combine and integrate different geospatial datasets.*

Connecting Fiji's Geospatial Information to Datum via GNSS CORS



Connecting Fiji's Geospatial Information to Datum via GNSS CORS

- Address safety and security issues
 - Protect assets and lives
 - Improved data consistency
 - Better understanding of data
 - Improved documentation of information resources
 - Improved data security and control
 - Promote informed planning and decision making
- 

Thank You

