



The **Council** of European Geodetic Surveyors  
**Comité** de Liaison des Géomètres Européens

# Surveyors and Ethics go back a long way

*Maurice Barbieri, CLGE President*



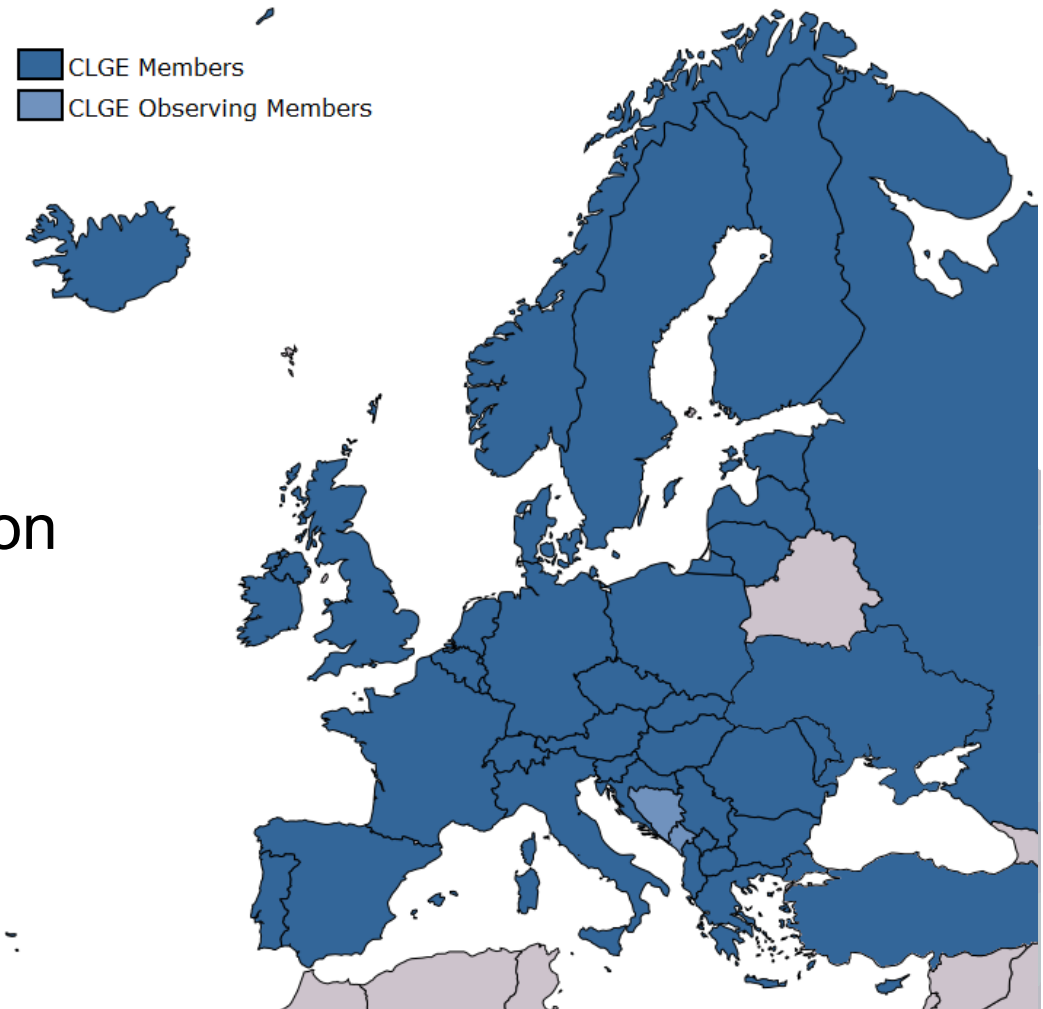
9th November 2018

TUFE 2018 Athens



# Leading Surveyors Association

- 39 Member countries
- + 2 Observing members
- 28 EU Members States
- >> 100.000 Surveyors
  
- Requires close cooperation
  - FIG, YSEN, ...
  - EuroGeographics, PCC
  - European Bodies
  - National Associations





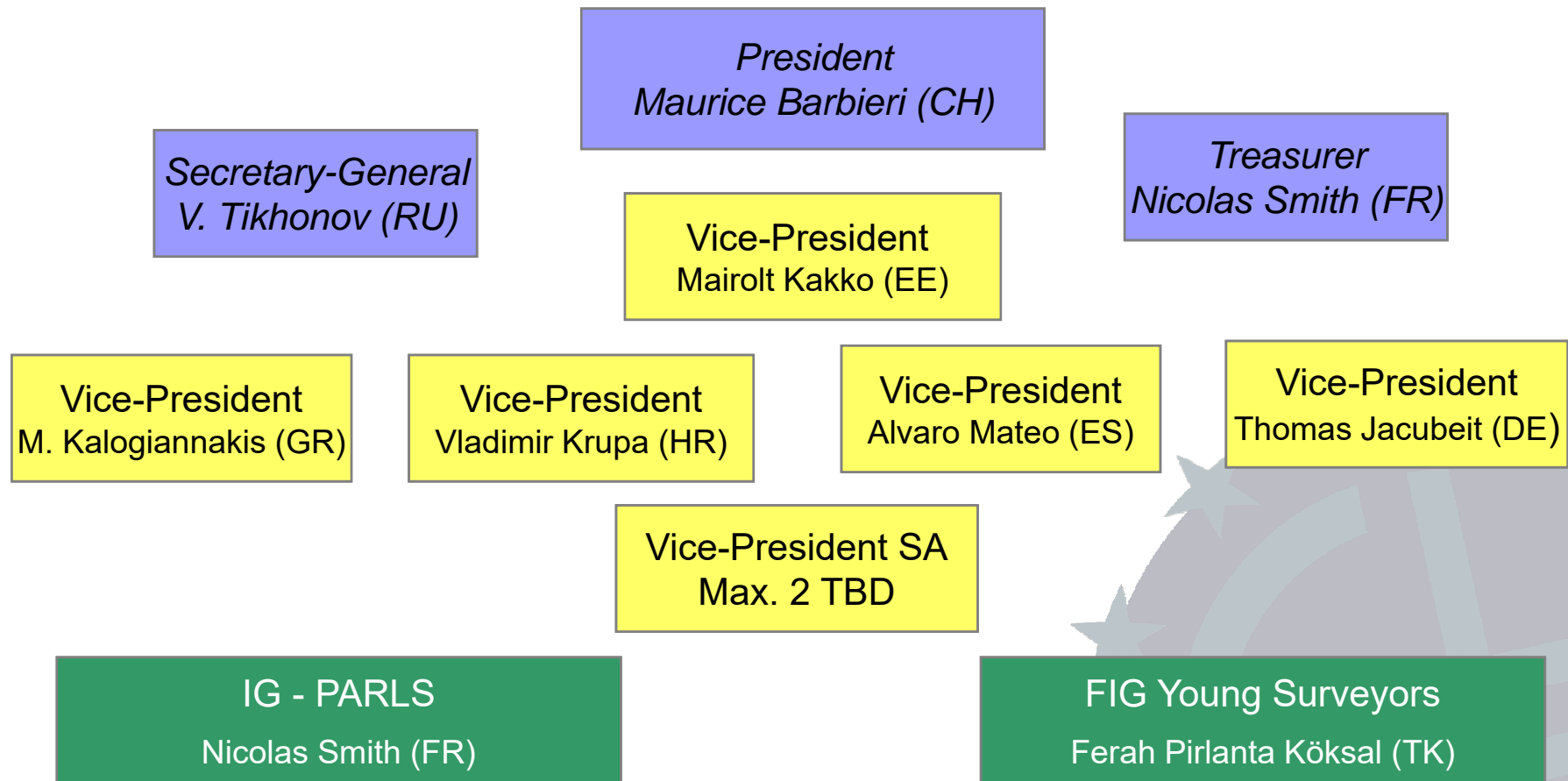
The **Council** of European Geodetic Surveyors  
*Comité de Liaison des Géomètres Européens*

# CLGE Ex-Board 2018 - 2020





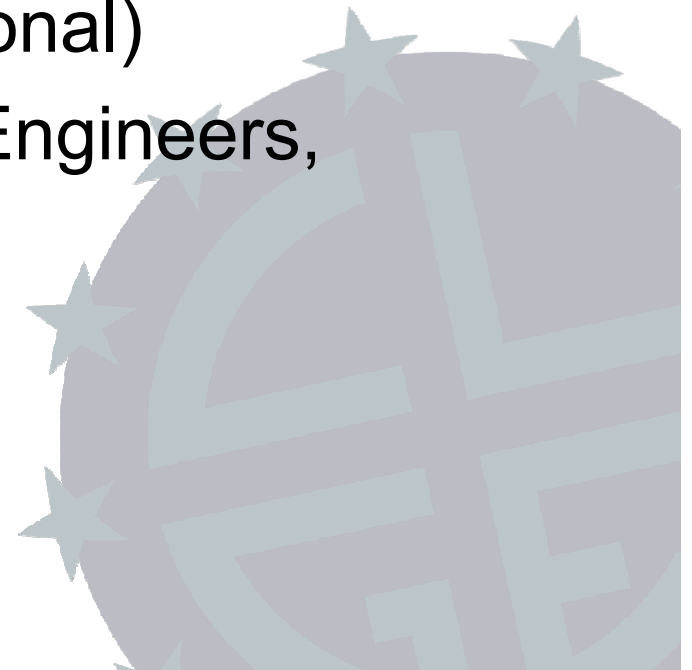
# Executive Board





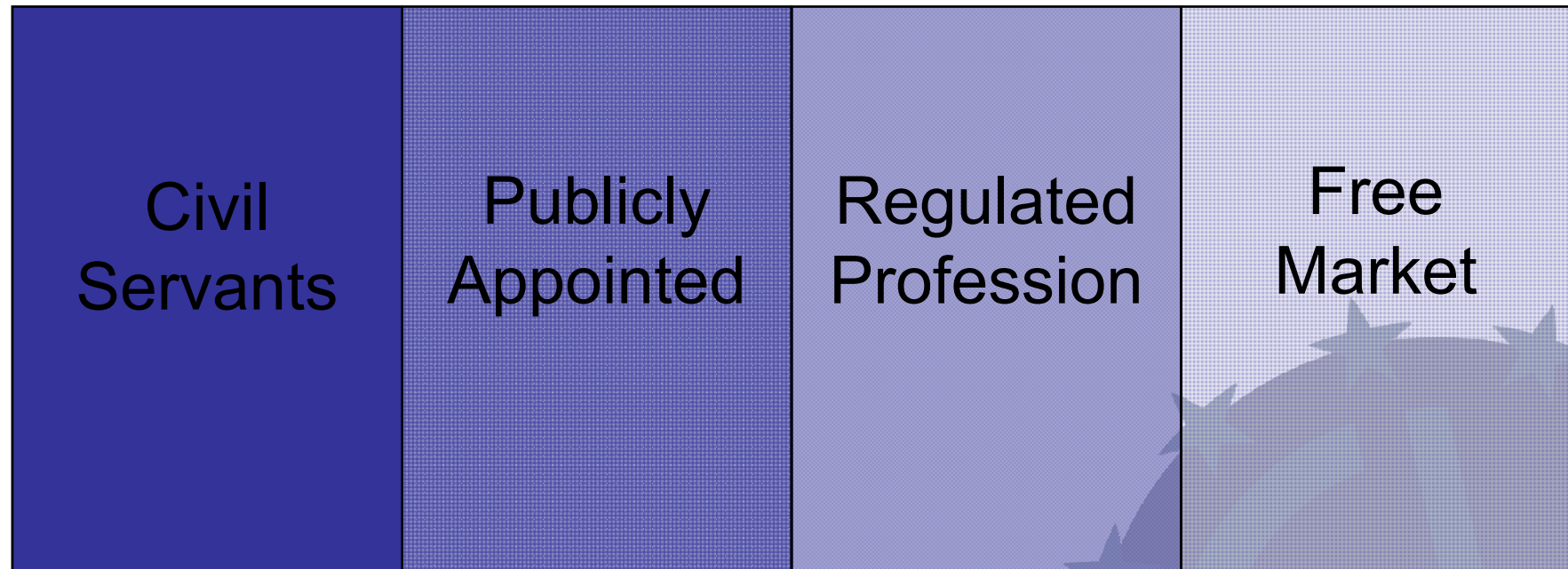
# Ethics : Facts and figures

- Who is involved? :
  - Public Authorities
  - Research units
  - Associations (national, regional)
  - Private sector ([Surveyors](#), Engineers, Architects,...)





# One Profession





# Ethics : Facts and figures

- The Codes:
  - [FIG professionals Ethics \(1998\)](#)
  - [International Ethics Standards Coalition \(IESC\)](#)
  - [Surveyors Creeds and Canons \(USA\)](#)
  - [Code of Conduct for European Surveyors](#)
  - National codes of Ethics



# Some examples

## SURVEYOR'S CREED AND CANONS

*As a Professional Surveyor, I dedicate my professional knowledge and skills to the advancement and betterment of human welfare.*

*I pledge:*

*To give the utmost of performance;*

*To participate in none but honest enterprise;*

*To live and work according to the laws of humankind and the highest standards of professional conduct;*

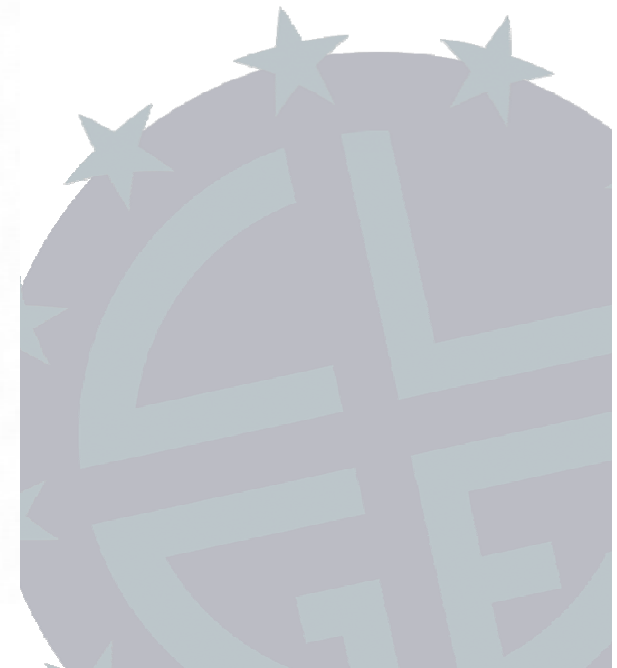
*To place service before profit, honor and standing of the profession before personal advantage, and the public welfare above all other considerations;*

*In humility and with need for Divine Guidance, I make this pledge.*

- Canon 1.** *A Professional Surveyor should refrain from conduct that is detrimental to the public.*
- Canon 2.** *A Professional Surveyor should abide by the rules and regulations pertaining to the practice of surveying within the licensing jurisdiction.*
- Canon 3.** *A Professional Surveyor should accept assignments only in one's area of professional competence and expertise.*
- Canon 4.** *A Professional Surveyor should develop and communicate a professional analysis and opinion without bias or personal interest.*
- Canon 5.** *A Professional Surveyor should maintain the confidential nature of the surveyor-client relationship.*
- Canon 6.** *A Professional Surveyor should use care to avoid advertising or solicitation that is misleading or otherwise contrary to the public interest.*
- Canon 7.** *A Professional Surveyor should maintain professional integrity when dealing with members of other professions.*



NATIONAL SOCIETY OF PROFESSIONAL SURVEYORS







# Some examples

FIG PUBLICATION NO. 17

## Statement of Ethical Principles and Model Code of Professional Conduct

### Ethical Principles

**Integrity**

**Independence**

**Care and competence**

**Duty**





# Some examples

**IES** INTERNATIONAL  
ETHICS  
STANDARDS  
[www.ies-coalition.org](http://www.ies-coalition.org)

## International Ethics Standards

An ethical framework for the global property market

December 2016

Ethical principles:

- Accountability
- Confidentiality
- Conflict of Interest
- Financial Responsibility
- Integrity
- Lawfulness
- Reflection
- Standard of Service
- Transparency
- Trust



The **Council** of European Geodetic Surveyors  
**Comité de Liaison des Géomètres Européens**

# Some examples



Consiglio Nazionale  
Geometri e Geometri Laureati



---

**CODE OF CONDUCT FOR EUROPEAN SURVEYORS**  
issued by the Council of European Geodetic Surveyors –  
Geometer Europaeus (CLGE - GE)

---

- General Principles
- Relationship to Recipients of Services
- Relationship with other Surveyors
- Professional qualification and development





# Ethics : Facts and figures

- The regulation :
  - Associations (national, regional)
  - Chambers
  - Orders
  - Registers
  - Authorities
  - Society





The **Council** of European Geodetic Surveyors  
*Comité de Liaison des Géomètres Européens*

# Washington Round Table the first Global Surveyors' Day

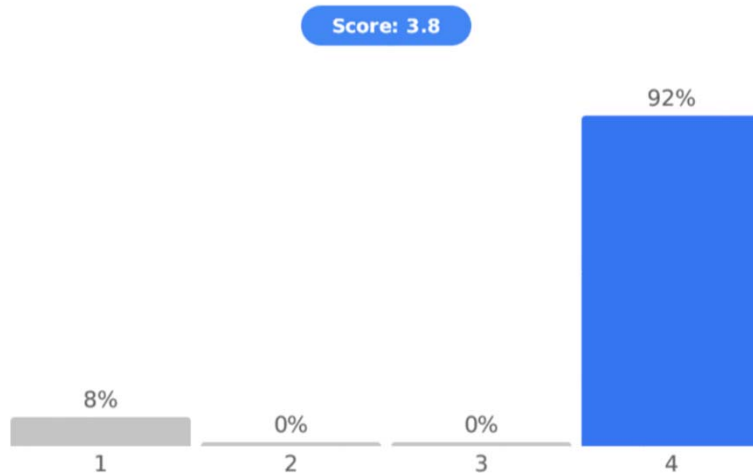


World Bank - Washington D.C. (USA)

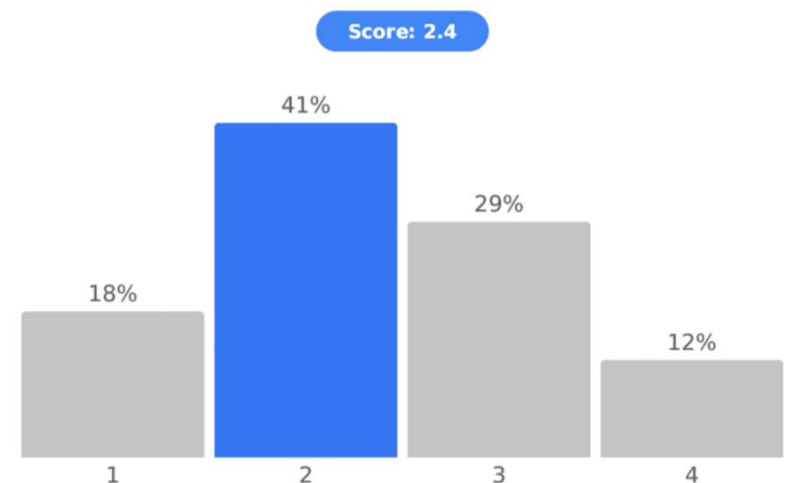


# Washington Round Table the first Global Surveyors' Day

Do you think that (professional) ethics are important in your country? 013



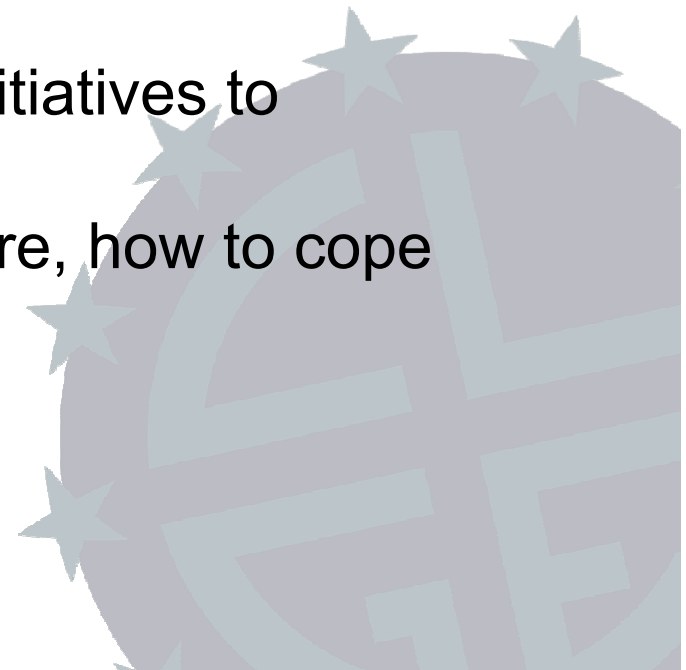
Do you think that professional ethics are well respected in your country? 017





# 2019, a World Bank Round Table on Professional Ethics in Surveying

- Worldwide, Regional and local initiatives to regulate professional ethics
- Professional ethics under pressure, how to cope with technical developments
- Ethics, from theory to practice





# The surveyor yesterday and today

- The technology and the society make us evolve

The pressure of technological development is driving social change







# “Code of Professional Qualification for Property Surveyors”

The screenshot shows the website's news section. At the top, there is a navigation menu with links for Home, About Us, News, Our Members, Events, Documents, and Partners. A search bar is also present. The main content area features a news article titled "A new Code of Professional Qualifications is available now". The article includes a photo of Clemens Kiepke, Chairman of IG-PARLS, and text stating that the former "Accord Multilatéral" has been replaced by the new Code of Professional Qualifications for Property Surveyors. The article also mentions the solemn signature during INTERGEO in Stuttgart on 15 September 2015 and lists three separate documents: the actual code, an iterative report, and a letter of intent. On the right side of the news section, there are widgets for "Our Members" (showing a map of Europe) and "May 20" (showing no events for the month).



Code of professional qualifications

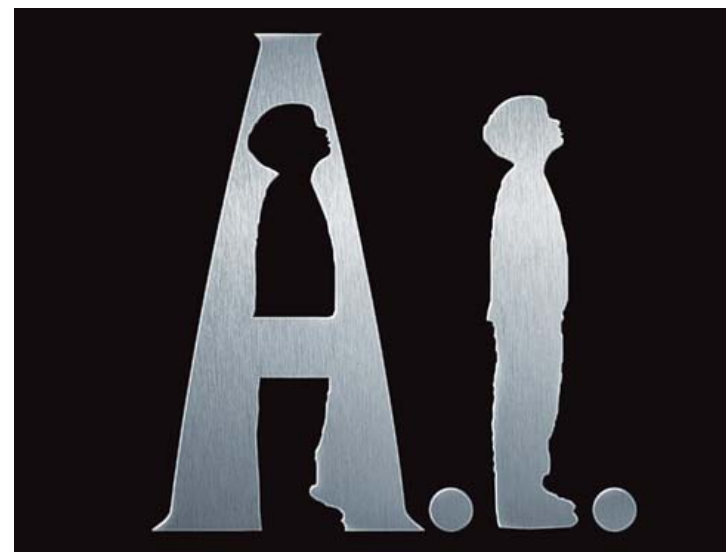
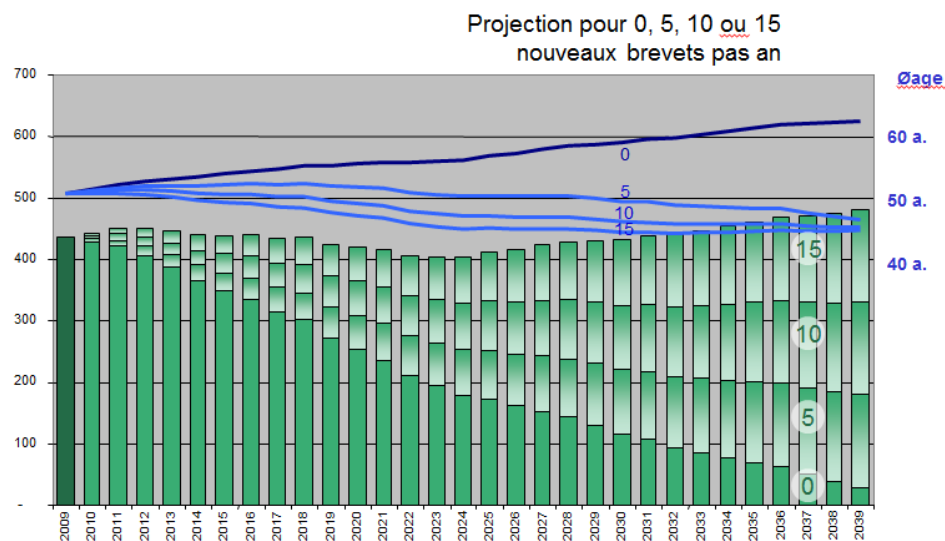
## Ver. 1.0 20150316 Code of professional qualifications for Property Surveyors

(The "Code of professional qualifications of Property Surveyors" renews and replaces "Multilateral Accord" issued by GE (Geometer Europaeus) in 2004 and adapted by CLGE/IG-PARLS by the merger of CLGE and GE in 2010.)

The topics covered by this Code are related to legal regulated cadastral work (in the field of real property formation, modification and registration), property and land management activities to ensure reliable cadastral systems and land registers and to secure and protect property rights. These basic systems and registers are fundamental infrastructural elements in every society in order to secure the rights and ownership of property. It is imperative, that all questions related to property are considered trustworthy and treated reliably.



# The surveyor tomorrow?





# Surveyor : one profession; several activities





# What is our future?

- The base of the digital revolution: the data
  - A new science is born
  - We have to adapt our education urgently (e-learning, CPD)
- The meta-platforms are the future
  - The apps will replace the traditional consultation
  - Virtual reality and the connected citizen exist already
- The new technologies will bring a (r)evolution in the traditional operations and in the registers
  - Blockchains will replace gradually the traditional operations. We have to improve some aspects (energy, hosting, sustainability, guaranty,...)
  - We must be ready to set up a collaboration between the public and the private sectors



# The new technologies / trends

We have to be ready to deal with:

- Blockchains (who keeps the control / gives the guarantee?)
- Artificial intelligence (machine operations will replace human tasks)
- Increasing of use of social media (fake news, influencing trends)
- Instrumental measurement (drones, LIDAR, satellite)
- Crowdsourcing



The **Council** of European Geodetic Surveyors  
**Comité de Liaison des Géomètres Européens**

# 3D and Ethics

## 3D ETHICS CHARTER

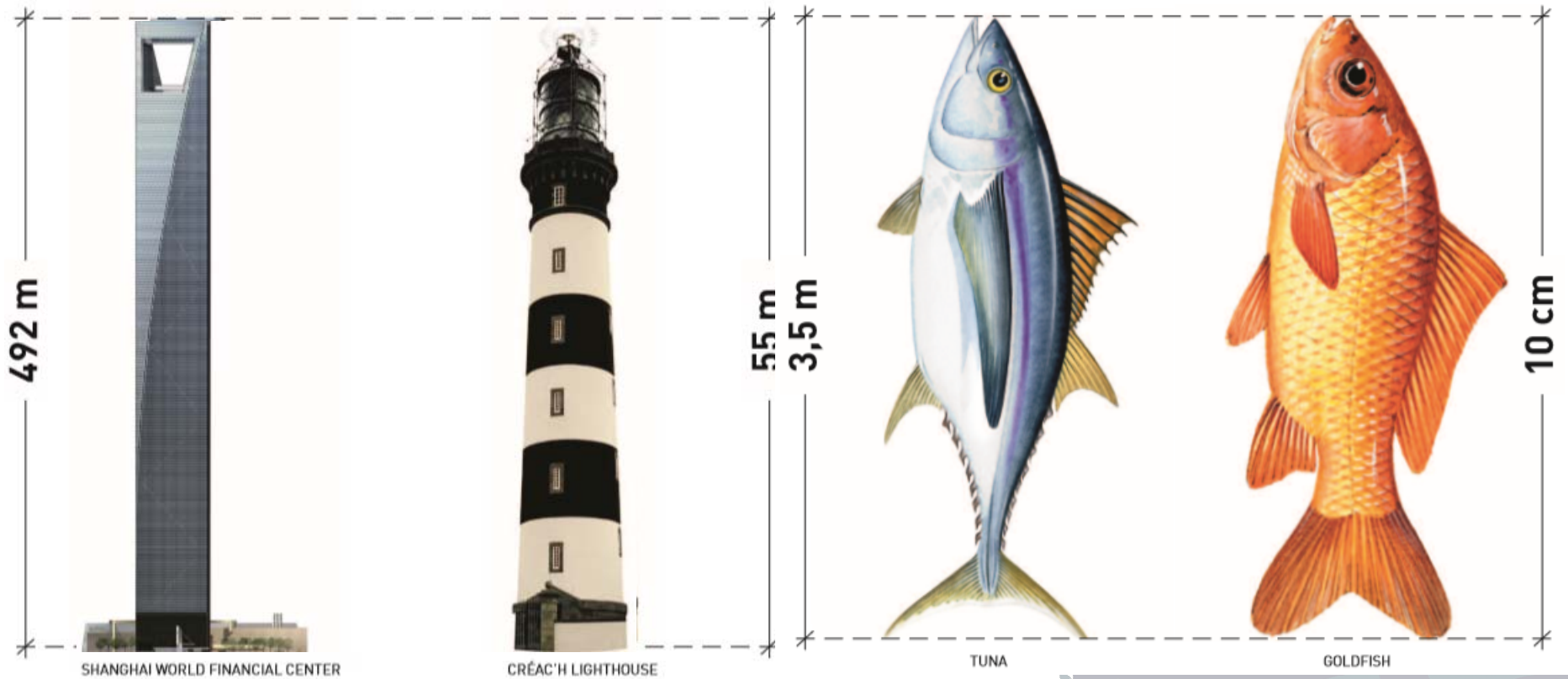


## FROM KNOW-HOW TO KNOWING HOW TO ACT



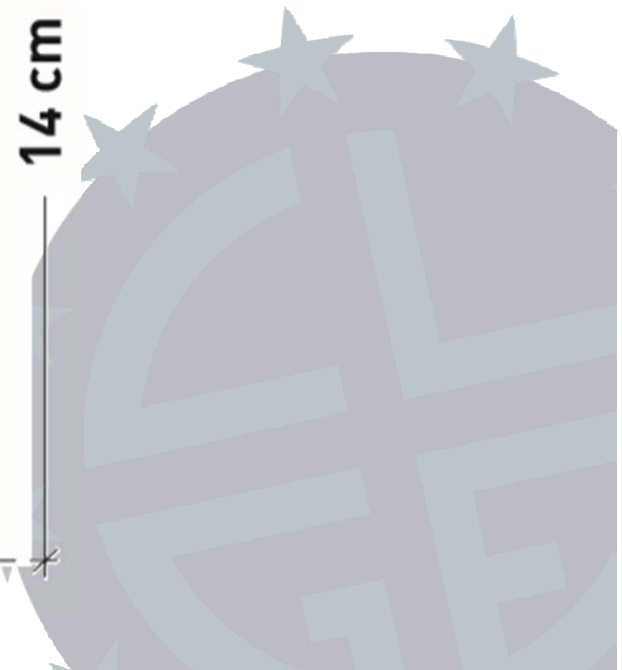


# 3D and Ethics





# 3D and Ethics







# 3D and Ethics

## PRINCIPLES

### 1. Principle of credibility

In order to ensure credible land representation, signatories commit to:

- ❑ create computer-generated images or three-dimensional representations that are not likely to influence without their knowledge the decision-maker, contracting authority or the public
- ❑ use only reliable and up-to-date data, promoting the use of official data that is of appropriate and sufficient quality and representative of the land affected by the project

### 2. Principle of transparency

In order to ensure the highest level of transparency in 3D production, the signatories commit to:

- ❑ document the source data included in the three-dimensional representation and computer-generated image
- ❑ specify the objectives of the three-dimensional representation
- ❑ indicate the appropriate subjective elements applied to the three-dimensional representation
- ❑ provide a suitable key for the three-dimensional representation
- ❑ reference any changes in data
- ❑ not to use data that at the time of acquisition would be damaging to people's private lives

### 3. Principle of 3D network development and training

In order to make the various players aware of the principles of this charter, the signatories commit to:

- ❑ share best practices in the use of 3D
- ❑ promote the creation of networks for sharing information in the area of three-dimensional land representation (3D community and forum in particular)
- ❑ encourage training (initial and ongoing) and research in the field of 3D
- ❑ promote the 3D Ethics and Deontology Charter



# 3D and Ethics

Some conclusions:

- Technological changes are driven societal changes
- Instrumental measurement / artificial intelligence are more and more used by the professionals
- We have new solutions for our day to day's work
- The new challenge is the control on digital data
- We don't have to forget to act as "ethical professionals"

Tank You for your attention