



Geospatial Consultants



George Havakis *Managing Director*

20 years in private sector
12 ½ years in public sector

Chairman of SIBA Victoria (*Spatial Industries Business Association*) and holds a position on the national board

Founding member of SSSI (Surveying and Spatial Sciences Institute).

Member of LandXML.org industry consortium

Executive Officer of the A-Spec consortium



Workforce Solutions

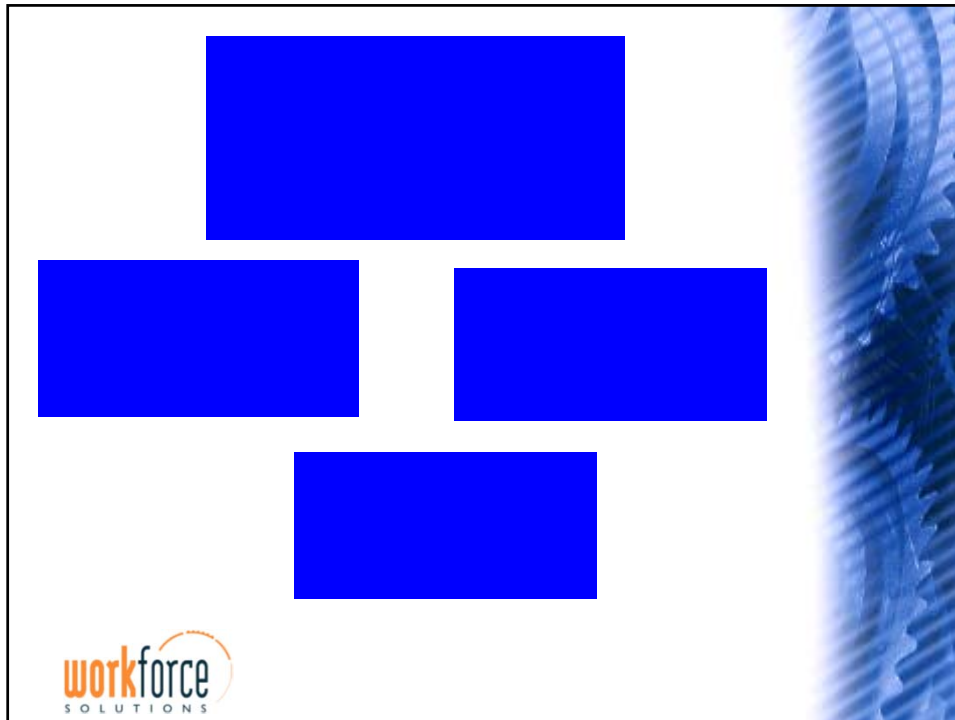
Vendor Independent Geospatial Consultants

- Strategic Advice
- GIS Project Management
- **Standard and Specification Development**
- Identification of User Requirements
- Cost Benefit Analysis
- GIS Tender Preparation, Evaluation and Recommendations
- Geospatial Data Capture
- Recruitment and Payroll Services



Facing the Challenges - Building the Capacity

**Low cost SDI
&
Best Practice Application**



Key Drivers

- Commonality of issues amongst Councils
- Qualification of accounts by Auditor ?
- The key to thinking globally with respect to spatial data is to promote the use of data standards
- Driven by Asset Management Strategies
- Consistent approach amongst all stakeholders
- Need for Interoperability

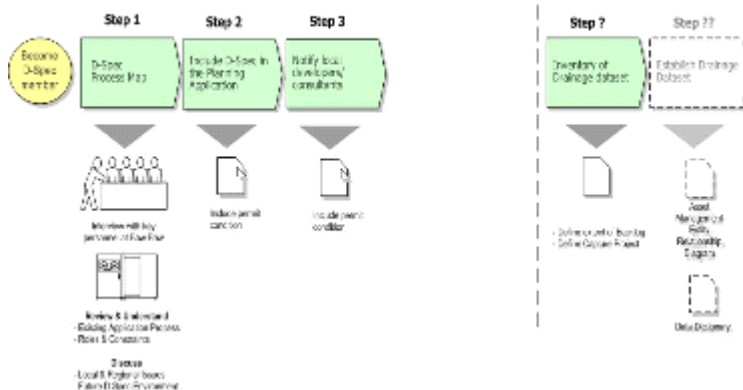


Development & Implementation

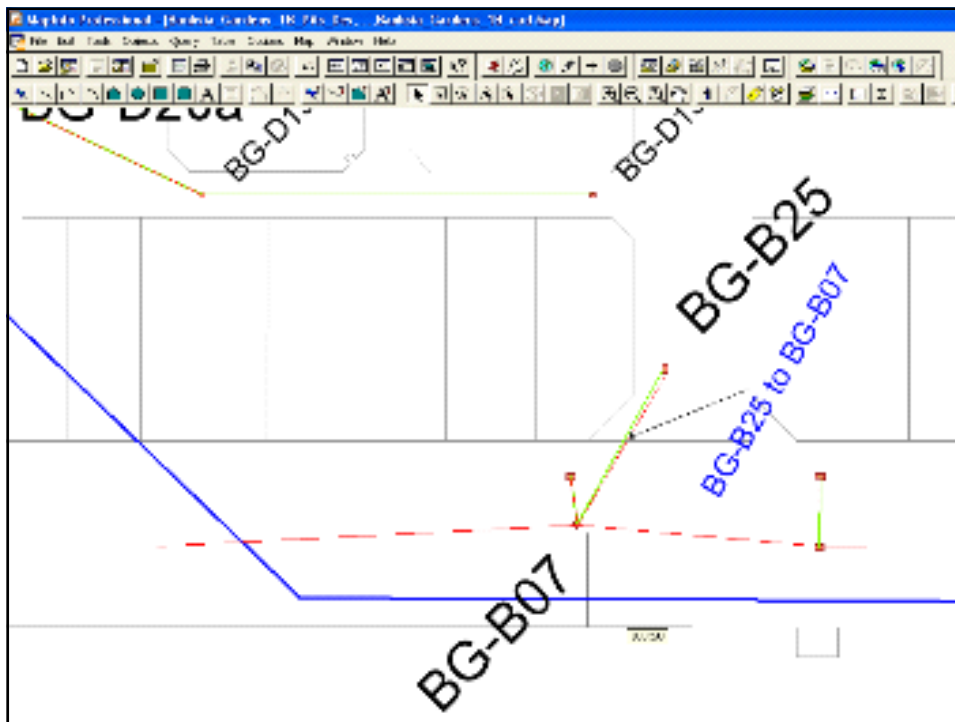


Road Map

Be a **SMART** follower



Industry Participation



Additional Industry “Buy in”

- Asset Management vendors
- GIS vendors
- Software developers
- Maintenance contractors
- Service providers
- Consultants
- Industry Associations

All involved in developing value added services



The screenshot shows a website interface with a red header bar. On the left, there is a navigation menu with links for "home", "participants", "news", "consultant register", and "contact us". Below the menu is a blue square and the text "Consortia Member Only". The main content area is titled "Registered Consultants" and lists 35 consulting firms. On the right side of the page, there is a link for "Participating Consortia".

[home](#)
[participants](#)
[news](#)
[consultant register](#)
[contact us](#)

Consortia Member Only

Registered Consultants

[Participating Consortia](#)

- > 35 Degrees South
- > Adrian Gordon Consulting
- > Baigents Pty Ltd
- > Barfell Wellington Pty Ltd
- > Biscoe Jackson Pty Ltd
- > Box Engineering Pty Ltd
- > Breake Pitt Dixon
- > Brown Consulting (Vic) Pty Ltd
- > Cardno BSD
- > Chris Smith & Associates
- > Coomes Consulting
- > Cowart & Wadley
- > David Curran Consulting Pty Ltd
- > DCE Dalton Consulting Engineers
- > Dennis Price and Miller
- > Design Link
- > Earth Tech Engineering Pty Ltd
- > Fortunato Group
- > Geocomp-Quintar Pty Ltd
- > Graham Richards Pty Ltd
- > Harley Survey Group
- > Hecker Moss Surveyors
- > Head & Humphreys
- > Hyder Consulting
- > John Kinneer & Associates
- > Kellogg, Brown & Root
- > KJR Spatial
- > Lambert & Rubin Pty Ltd
- > Langdon Baldwin
- > McMillan Nolan
- > Miller & Merrigan
- > M&R Surveys
- > MWH
- > Mixson, Noel & Holmes Engineers
- > Opus Informatica
- > Perry Fraser & Jones Pty Ltd
- > Parsons Brinckerhoff



WA Stakeholders

Department of Water
Government of Western Australia

mainroads
WESTERN AUSTRALIA

Albany

Shire of Busselton
Geographical Story

City of Cockburn

CITY of GOSNELLS

shire of kalamunda

City of MANDURAH

CITY OF Rockingham

accelerate your ideas

CITY OF SWAN
Let's realise it happen

City of Wanneroo

workforce
SOLUTIONS



Victorian Stakeholders

BAY SAUNDERS

BASS COAST

CITY OF BALLARAT

BRIMBANK
CITY COUNCIL

City of Casey

Colac Otway
SHIRE
Naturally Progressive

CITY OF GREATER DANDENONG

CLARKE SHIRE

HUME
CITY COUNCIL

LatrobeCity

KELTON

city of Melbourne

MITCHELL
SHIRE COUNCIL

MORNINGTON PENINSULA
SHIRE

SurfCOAST
CITY

GREATER SHEPPARTON

South Gippsland
SHIRE COUNCIL

RURAL CITY OF Wangaratta

WARRNAMBOOL
CITY COUNCIL

WYNDHAM
CITY COUNCIL

City of Whittlesea

workforce
SOLUTIONS

Key Lessons learned

Balance the risk

CO-ORDINATION

CO-OPERATION

COLLABORATION



Or does that mean...

PRODDING

CAJOLING

SEDUCING



Key Lessons learned

- Solve actual business problems
- **Communicate early and often**
- Accept that progress will be incremental -Be patient
- **One size does not fit all**
- Enforcement – tie in with local planning & engineering requirements



THANK YOU

www.dspeg.com.au

George Havakis
p: 03 9877 6972
m: 0407 574 477
e: george@viccadd.com.au

