



Spatial Information Management in the Context of Organizational Development – the Approach in North-Rhine Westphalia, Germany

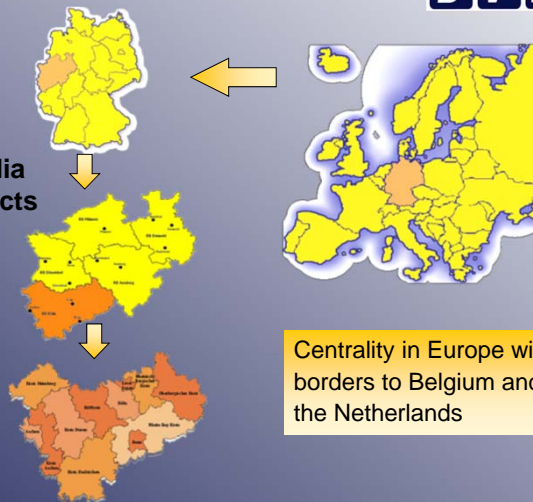
Dr. Jens Riecken
DVW Vice President
c/o Ministry of the Interior North-Rhine Westphalia, Germany



⇓ **Germany**
16 federal states
– 82 mill. people

⇓ **North-Rhine Westphalia**
5 administrative districts
– 18 mill. people
– 9 mill. parcels

• **District of Cologne**
– 4 municipalities
– 8 counties
– 95 dependent cities
– 4.36 mill. people
– 7.365 km²



Centrality in Europe with borders to Belgium and the Netherlands



**North-Rhine Westphalia Cologne District Government
Department 7 = GEObasis.nrw**

- **service provider for the whole of North-Rhine Westphalia** (280 staff members)
- offers **geobasis data** (reference data) for citizens, public administration, trade and industry
- **products and services**
 - **Satellite Positioning Service (SAPOS®)** / coordinate reference
 - topographic maps /data
 - aerial views / orthophotos
 - terrain- and landscape-models
 - thematic maps / data
 - ...
 - **house-coordinates / addresses**



Reorganisation of the surveying and mapping administration

Under the pressure of cost reduction the German State of North-Rhine Westphalia decided in 2007 to reorganise its surveying and mapping administration.

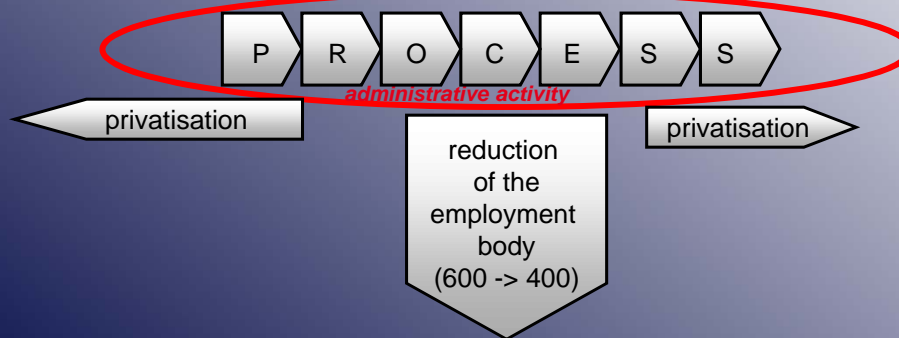
The main focus was:

1. Concentration on kernel tasks, reduction of the employment body
2. Private business replaces administrative activity
3. Restructuring of the organisation under consideration of work processes and quality measurement



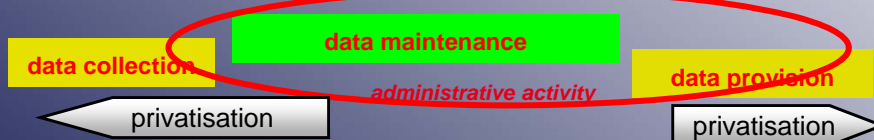
Definition of kernel tasks and personal resources

- guarantee of services in the surveying and mapping administration
- review of necessary tasks >>> reduction of administrative / state activities with respect to kernel tasks / definition of the spatial information infrastructure



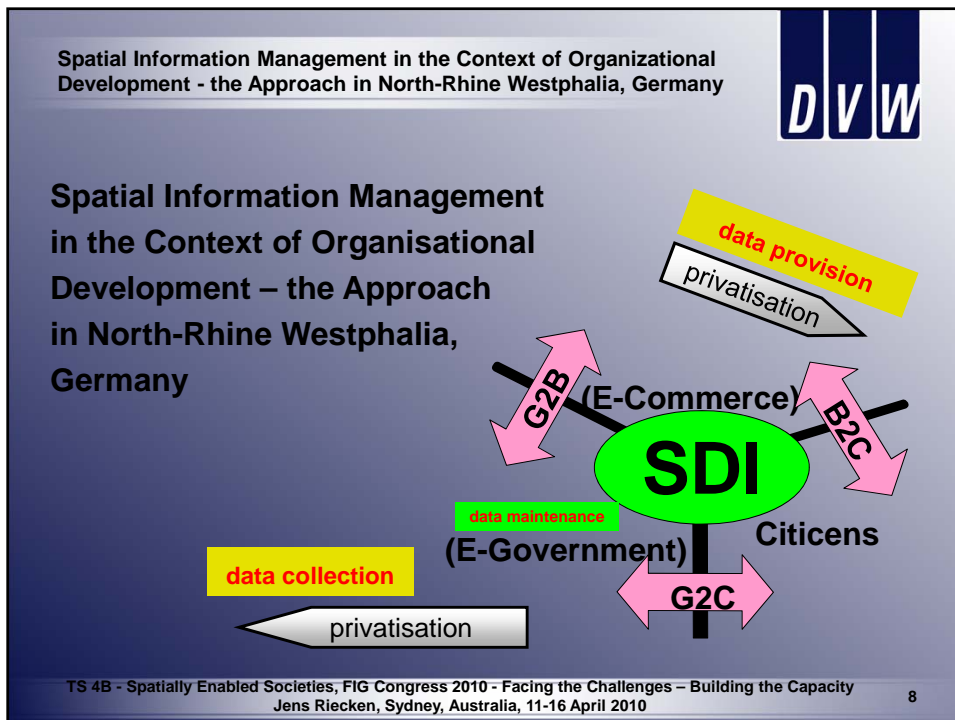
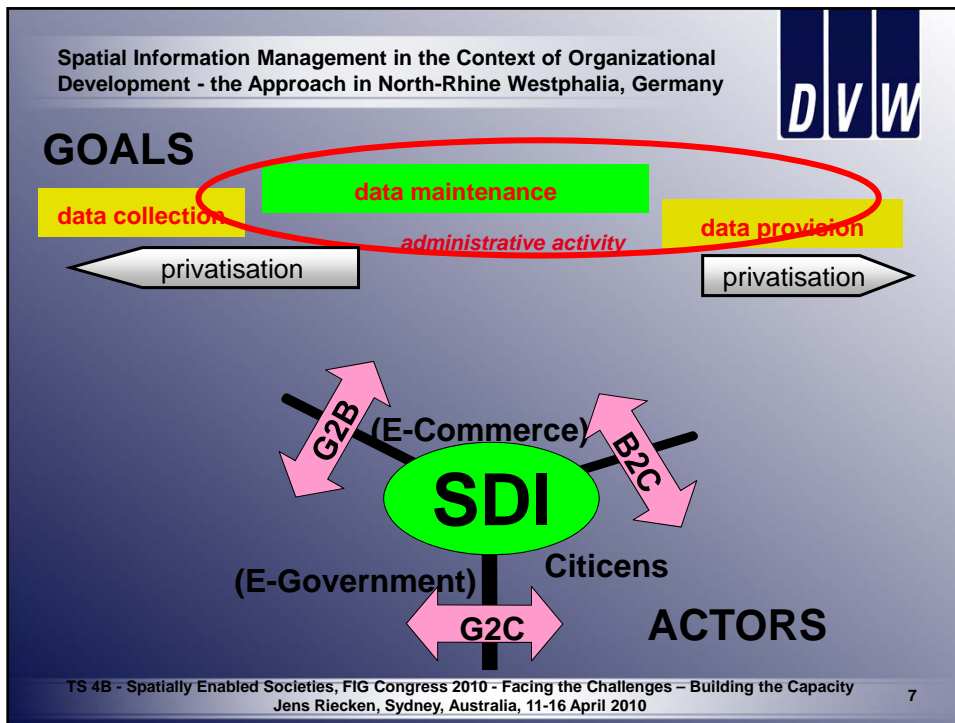
Definition of kernel tasks and personal resources

- guarantee of services in the surveying and mapping administration
- review of necessary tasks >>> reduction of administrative / state activities with respect to kernel tasks / definition of the spatial information infrastructure



kernel tasks = data maintenance and data provision restricted to a defined range of reference data (kernel of reference data)

perspective: SDI in close relation to INSPIRE



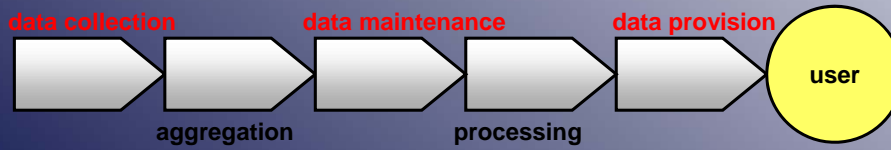


Surveying and Mapping Law in NRW

Vermessungs- und Katastergesetz NRW

§ 1 tasks

(1) ... The **collection, maintenance and provision** of the surveying and mapping **data** ... have to be continuously adjusted to the development of science and technique.



(1) ... The **collection, maintenance and provision** of the surveying and mapping **data** ... have to be continuously adjusted to the development of science and technique.

