



Cloud Computing: From “Isolate-Mode” to “Share-Mode”

SuperMap

The Smart Grid Can Deliver

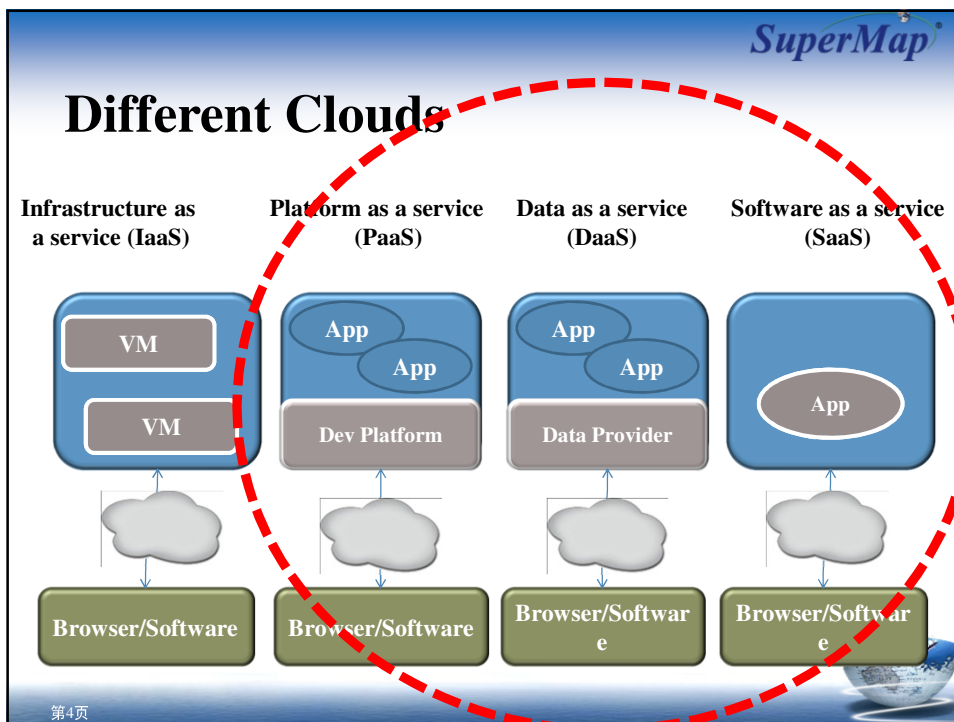
BENEFITS

- Enhanced energy security
- Reduced greenhouse gases
- Improved urban air quality

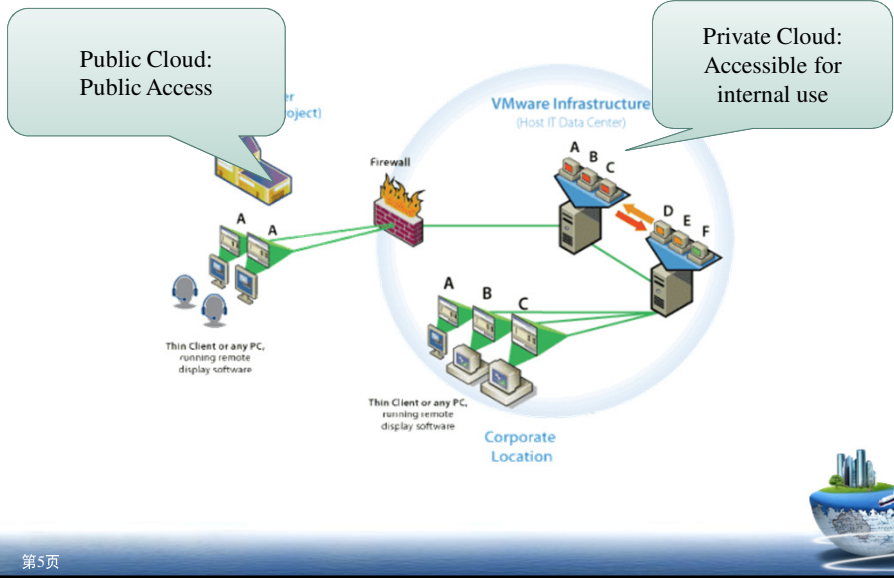
PHENOMENON

Access it whenever/wherever you need

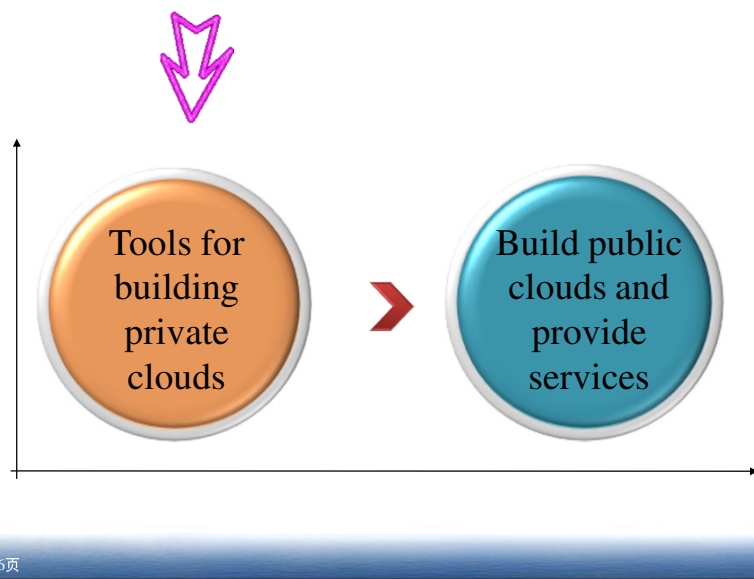
第3页



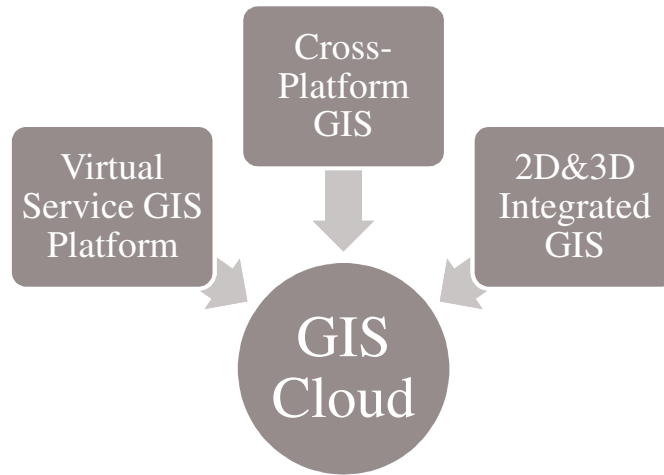
Public vs Private Cloud



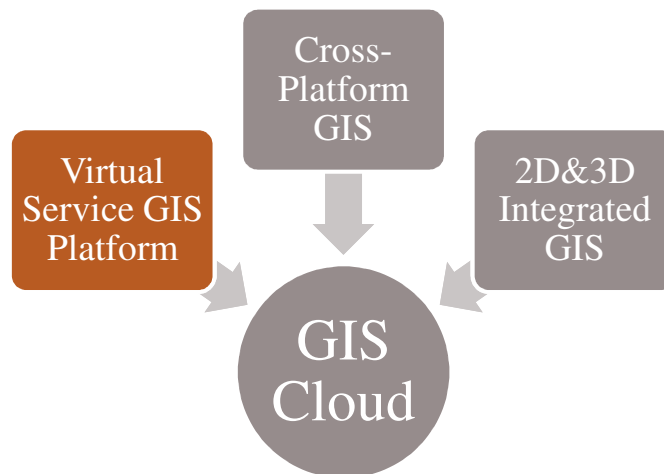
SuperMap's Plan for GIS Cloud

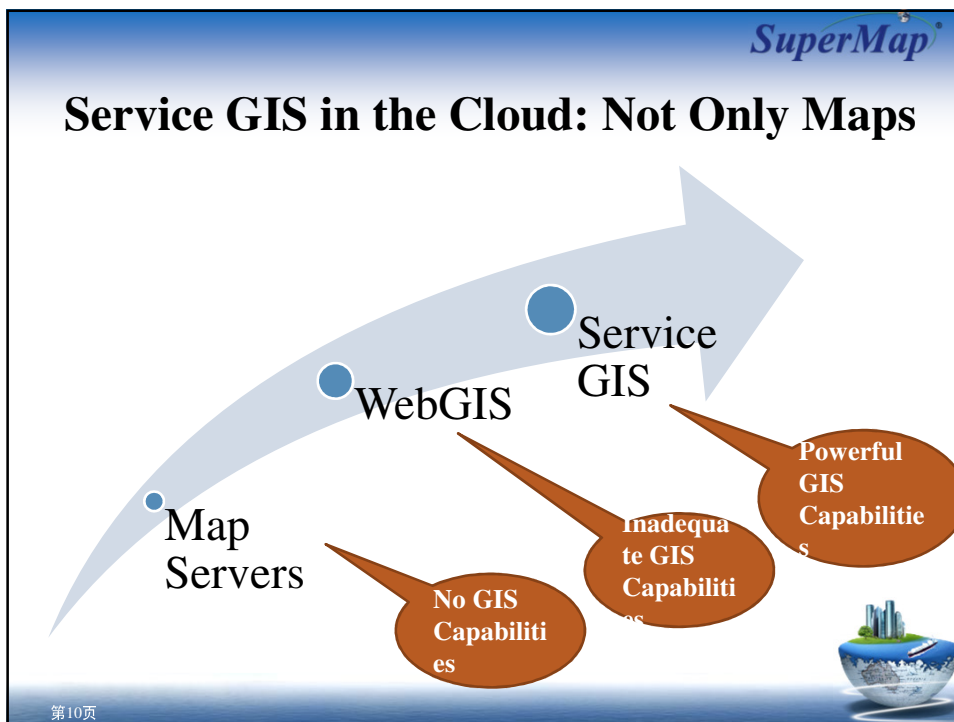
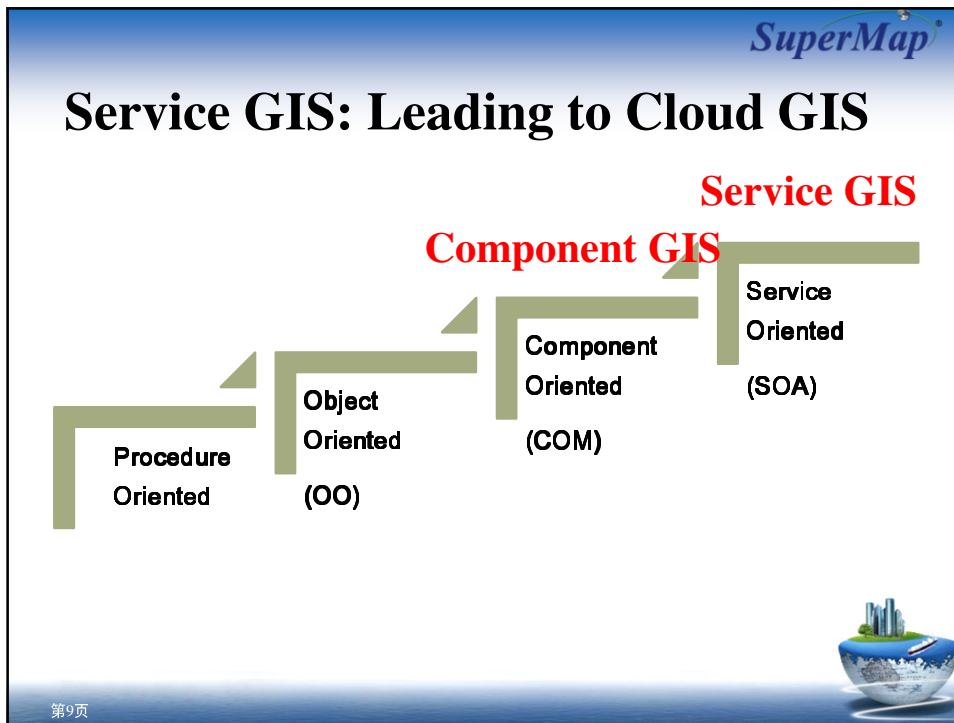


Requirements on GIS Software



Requirements on GIS Software (1)





SuperMap

SuperMap Service GIS Platform— SuperMap iServer

Full GIS Capabilities

Virtual

New GIS (SOA)

Cluster

Aggregation

第11页

SuperMap

Aggregation: Build Your Application Instantly

App 1 App 2 App 3 ... App M

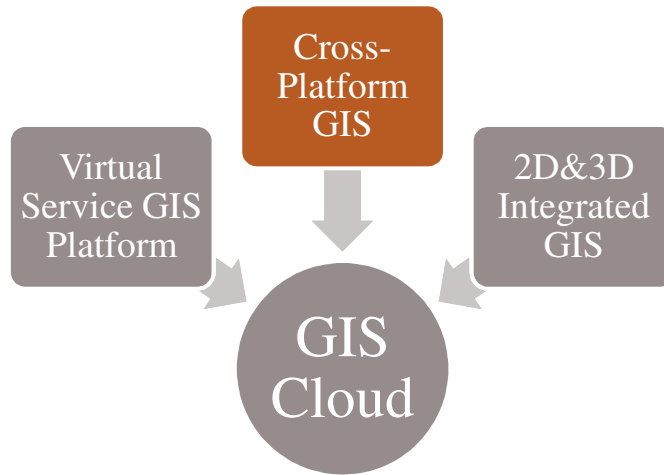
GIS Platform

Service Aggregation

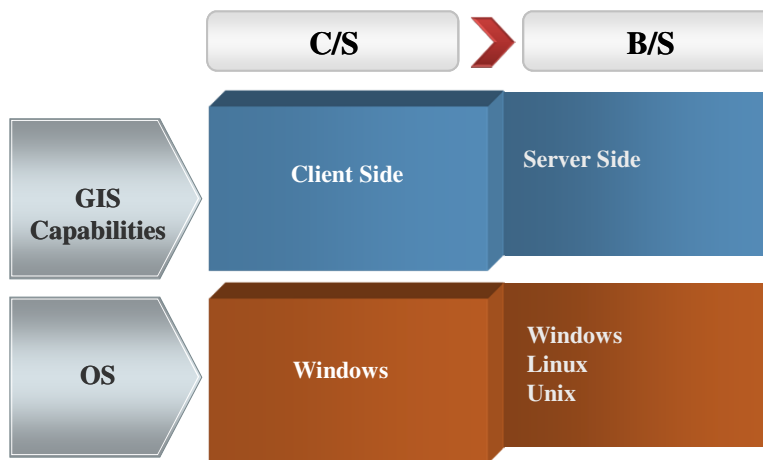
Cloud 1 Cloud 2 ... Cloud N

第12页

Requirements on GIS Software (2)



Cross platform is a Must



Cross-Platform: More Choices

Windows

Microsoft

Amazon

Linux, Unix

IBM

Redhat
You can't

resist

Google

...

第15页

SuperMap Approach to Cross Platform

Conventionally

COM VM on Unix, Linux,
Run COM Components

Low cost, fast development

Low performance on Non-
Windows platforms

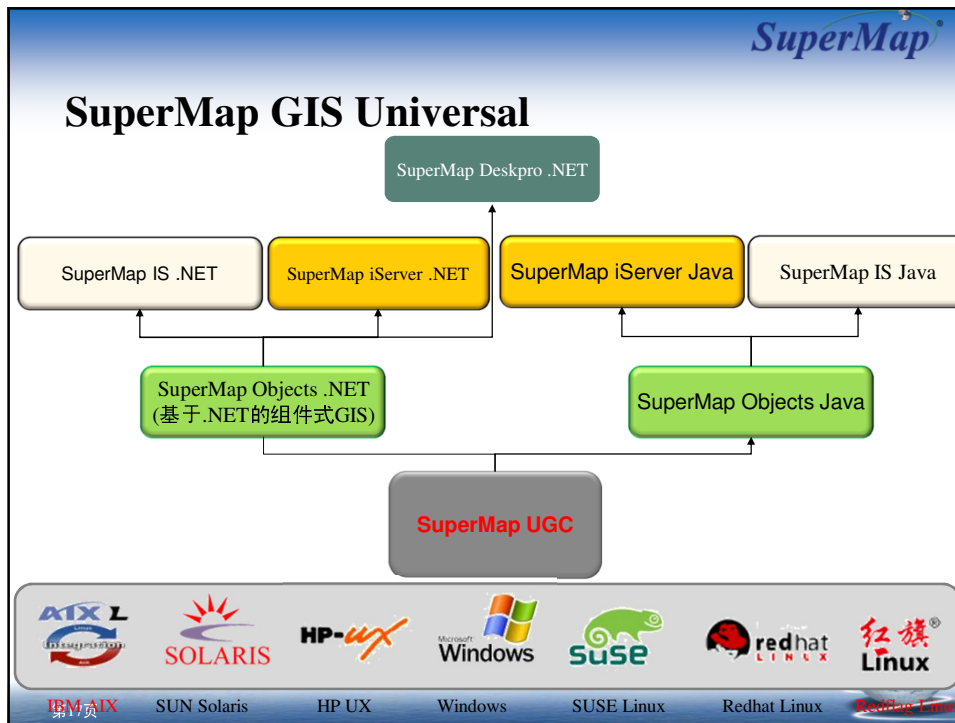
SuperMap

Rewrite GIS core in C++,
develop new software

We develop cross platform
software with great efforts

High performance on all
platforms

第16页

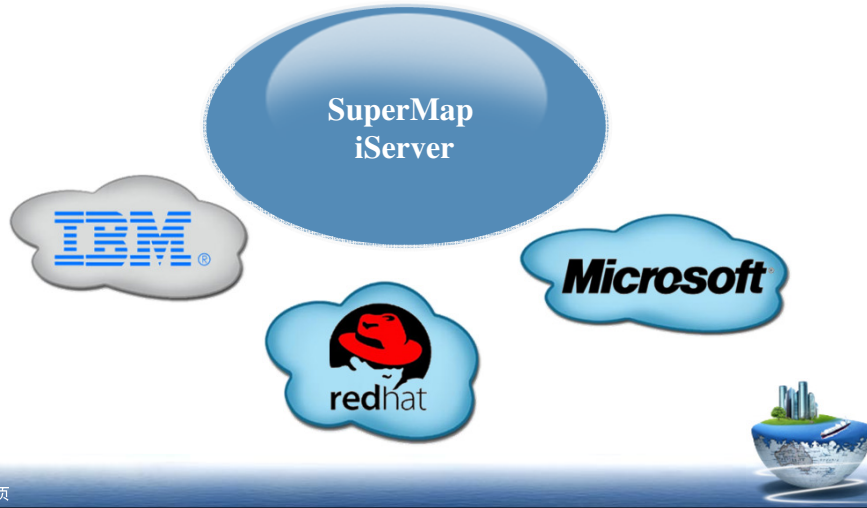


The Characteristics of Universal GIS Core

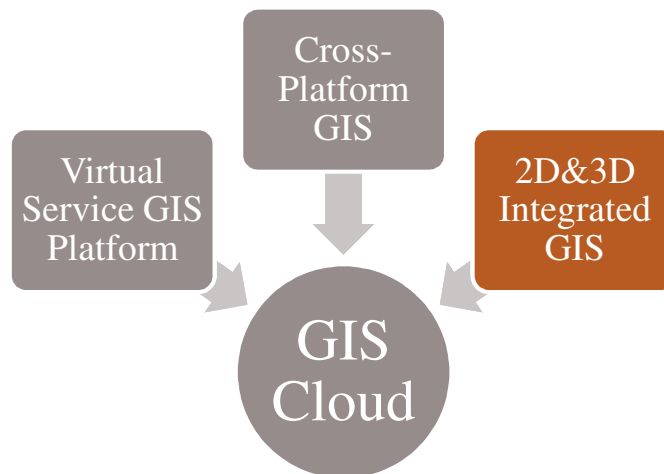
- Consistent functions among all products**
 - All the product will update together
- Support various of computer systems**
 - Unix, Windows, Linux...
- Support lots of computer languages**
 - .NET, Java
- High efficiency**
 - (C++, different from other cores like java)
- Flexible to adapt the ever changing technology**
 - Easily to adjust to new technologies

第18页

Support for Different Clouds



Requirements on GIS Software(3)



SuperMap®

Realspace GIS: Integration of 2D&3D ---Intuitive GIS Cloud

第21页

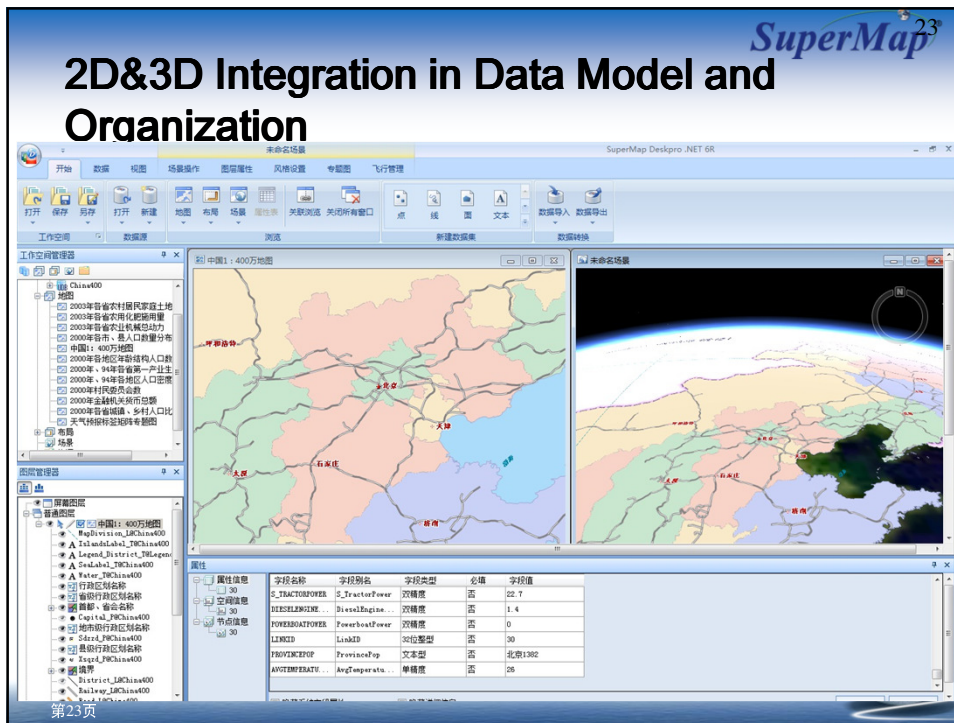
SuperMap®

Hybrid Solution:

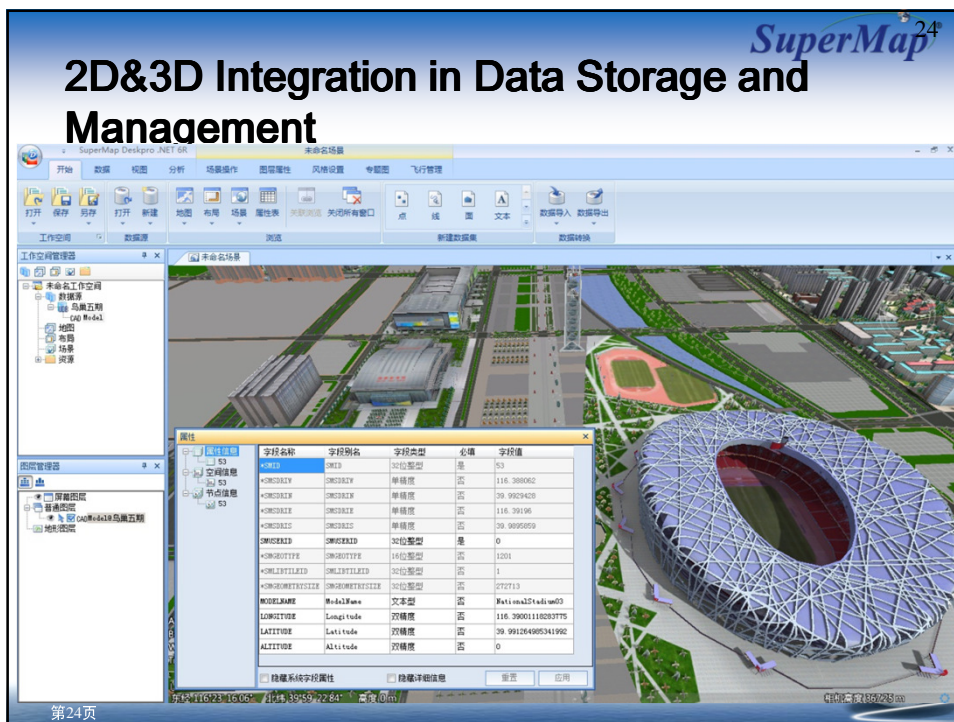
<p style="text-align: center;">Weak in integration of data</p> <ul style="list-style-type: none"> • Data redundancy 	<p style="text-align: center;">Weak in integration of 2D&3D</p> <ul style="list-style-type: none"> • Difficult to integrate 2D with 3D 	<p style="text-align: center;">Low Advanced Spatial Analysis</p> <ul style="list-style-type: none"> • Difficult to implement advanced spatial analysis
--	---	---

第22页

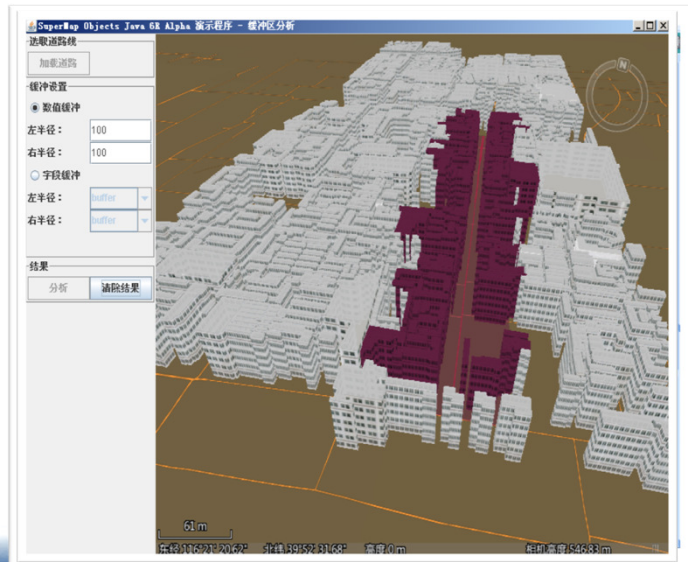
2D&3D Integration in Data Model and Organization



2D&3D Integration in Data Storage and Management

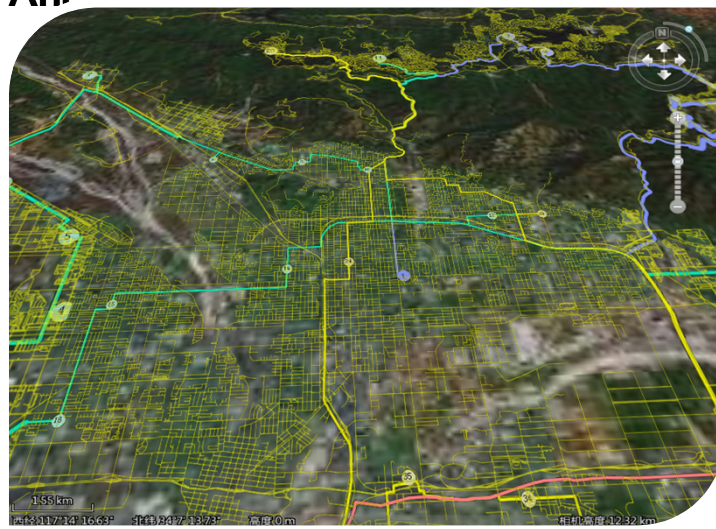


2D&3D Integration in Spatial Analysis



第25页

2D&3D Integration in Spatial Analysis



第26页

