

Long Term Assessment and Mapping of Erosion Hotspots in South East Nigeria

Obinna C.D. ANEJIONU, Peter C. NWILO and Elijah S. EBINNE

Paper presented at the FIG Working Week 2013– Environment for Sustainability
International Conference Centre and Nicon Luxury Hotel
Abuja, Nigeria, 6–10 May 2013



Department of Geoinformatics and Surveying
University of Nigeria Enugu Campus



Soil Erosion in the Southeast Nigeria

- Soil erosion is a serious environmental issue in south east Nigeria
- Increase in rate of erosion
- Devastating Impacts
 - Land degradation
 - Infrastructural damage
 - Loss of lives and properties



Obijiofor, 2012

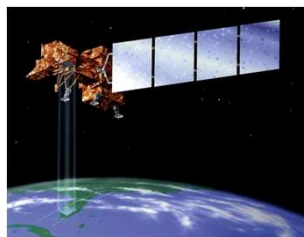
- Thus, assessment of erosion risk and mapping of hotspots
- Important step in curbing the increasing menace

Erosion hotspot identification

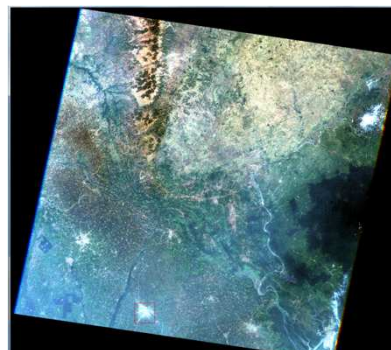
- Hotspots usually identified via
 - Field Observation
- Limitations:
 - time consuming
 - expensive
 - Tedious
- More so:
 - Current erosion studies in the region segmented
 - Focusing on different parts of the region
 - Therefore, the need for a broad regional study
- Environmental satellites to the rescue?

Erosion hotspots from satellites?

- Inputs from satellites used in erosion model
 - Cost effective
 - Quick
 - Comprehensive
 - Broader coverage
 - Can look back in time



The Landsat 7 satellite



17th December 2000 ETM+ image of part of Southeast Nigeria

Revised Universal Soil Loss Equation

- $A = R * K * LS * C * P$
 - **A** = the predicted average annual soil loss (tons per hectare per year)
 - **R** = Rainfall-Runoff Erosivity Factor
 - **K** = Soil Erodibility Factor
 - **LS** = Slope Length and Steepness Factor
 - **C** = Cover-Management Factor
 - **P** = Support Practices Factor
- 3 study periods
 - 1986-1996
 - 1996-2002
 - 2002-2011.

Data

- 15 cloud-free Landsat images (TM and ETM+)
- 3 digital elevation models (DEM)
 - ASTER Global DEM V2
 - SRTM 90m
 - GTOPO30
- Soil map of the region
- Political map of Nigeria
- Monthly mean precipitation



The erosion model

- Action of erosion stimulated with model
- $R = 38.5 + 0.35 \times Pr$
 - Pr = is the annual average rainfall (mm/yr)

$$A = R * K * LS * C * P$$

- Soil erodibility factor (K)
 - empirically derived index

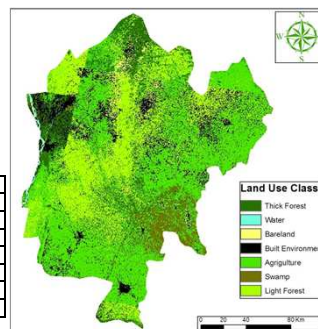
Soil Type	K factor	Soil Type	K factor
Clay Loam	0.30	Sandy Loam	0.13
Concretionary Clay	0.17	Sandy	0.02
Sandy Clay	0.20	Loamy Sand	0.04

- Slope length and slope steepness factor (LS)
 - λ = slope length in meters
 - θ = slope in degrees
 - m = a constant dependent on the value of the slope gradient (Wischmeier and Smith, 1978, Lu *et al.*, 2004)
- Aster, SRTM and GTOPO 30 DEMs used to derive the slopes

The erosion model (contd.)

- Cover and management factor (C)
 - indicates how crop management and land cover affect soil erodibility
 - dependent on landuse/landcover
- Supervised classification to delineate landuse
 - seven major land cover classes
 - Classes used to assign C values
- Support practice factor (P)
 - level of erosion control practices such as contour planting, terracing and strip cropping

Code	Land Use	C
1	Water	0.000
2	Barren	0.500
3	Developed	0.003
4	Light Vegetation	0.05
5	Agriculture	0.3
6	Thick Forest	0.004
7	Swamp/Muddy	0.002



Land use classification map

P factor values

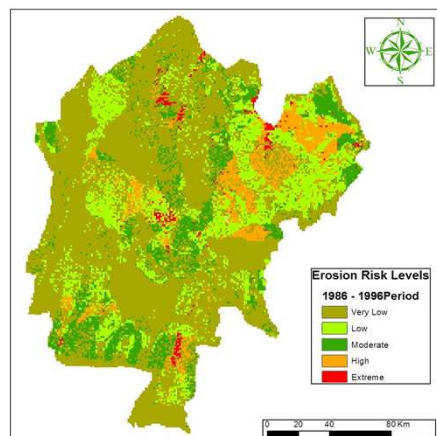
Slope	Contouring	Stripping	Terracing
0.0 - 7.00	0.55	0.27	0.10
7.00 - 11.3	0.60	0.30	0.12
11.3 - 17.6	0.80	0.40	0.16
17.6 - 26.8	0.90	0.45	0.18
26.8 >	1.00	0.50	0.20

Mapping hotspots

- Average soil loss in tons per acre per year (A) estimated for each of the study period via RUSLE
- Resultant soil loss map reclassified
- 5 erosion risk level areas delineated
 - extreme
 - high
 - moderate
 - low
 - very low
- Extreme and high risk levels noted as hotspots

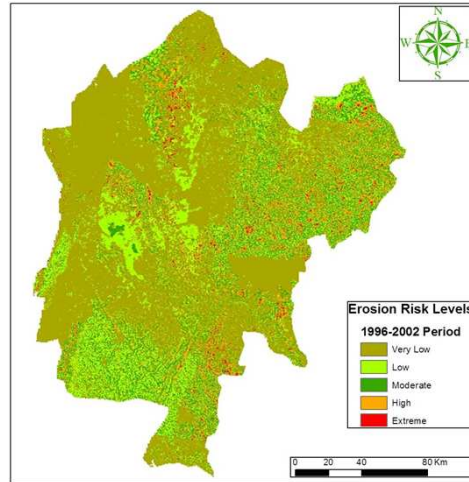
Erosion hotspots

- 1986-1996
- Hotspots denoted in red and orange



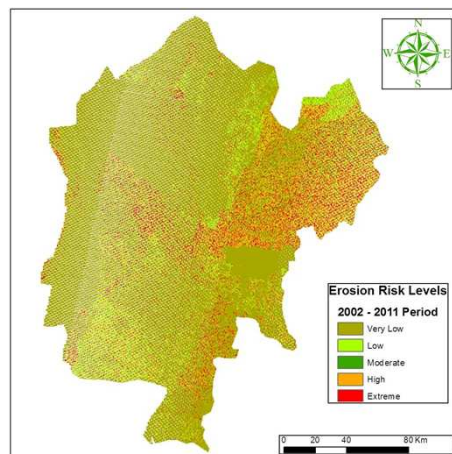
Erosion hotspots (Contd.)

- 1996-2000
- Hotspots denoted in red and orange

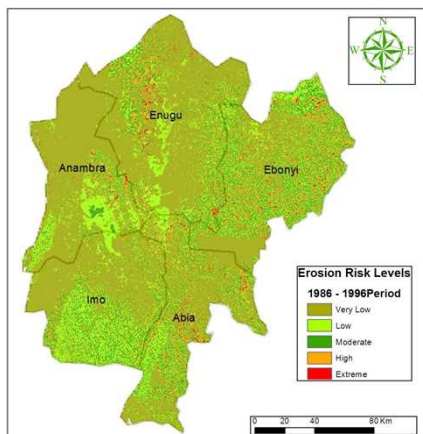


Erosion hotspots (Contd.)

- 2000-2011
- Hotspots denoted in red and orange
- Gaps due to Scan Line Correction error



Discussion



Research demonstrates that existing erosion control measures are not adequate to contain impacts of erosion

- Hotspots concentrated in most parts of Ebonyi State, Enugu State, Anambra State and Abia State
- Imo State was the least devastated by erosion
- Noticeable increasing erosion risk levels from earlier periods till present
- Ebonyi State will be severely be impacted by erosion in the next 10 years.
 - The consequences of this on food security in the region dire
- Fieldwork underway to validate result obtained

Conclusion

- Long-time assessment of areas of erosion vulnerability in the south east of Nigeria
- Mapped spatial distribution of erosion hotspots in the region over a 26 year period (1986-2011 inclusive)
 - providing a great insight of erosion impact trends in the region.
- Research clearly demonstrated the seriousness of erosion menace in the region.
- Ebonyi identified as the most impacted
- Increasing rate of erosion identified calls for urgent attention from the relevant government agencies
- Efforts to validate results ongoing
- Results expected to be relevant guide to environmental and water resources managers involved in the mitigation of the impact of erosion for urgent intervention

References

- Lu, D., Li, G, Valladares, G. S., and Batistella, M. (2004). Mapping soil erosion risk in Rondonia, Brazilian Amazonia: using RUSLE, remote sensing and GIS. *Land Degrad. Develop.* 15: 499–512.
- [Obijiofor](#), L. (2012). Halting soil erosion and other development challenges in Nanka. Nanka Patriotic Union Diaspora [World convention Houston Texas, United States.](#)
- Wischmeier, W.H., and Smith, D.D. (1978). Predicting rainfall erosion losses – A guide to conservation planning. US Department of Agriculture, Science and Education Administration. *Agriculture handbook 537*. Washington.

Thank you

Contact:

Obinna C.D. Anejionu

Email: obinna.anejionu@unn.edu.ng