

# Pro Poor Land Administration

Christiaan Lemmen (Kadaster, The Netherlands)

Jaap Zevenbergen (University of Twente/ITC, The Netherlands)

Stig Enemark (Aalborg University, Denmark)

XXV FIG Congress Kuala Lumpur, Malaysia

June 18th , 2014





LAND ADMINISTRATION  
ISO 19152:2012

Process of determining, recording and disseminating information about the relationship between people and land



Slums



## Customary Areas



7

## Private Land



8

# State Lands

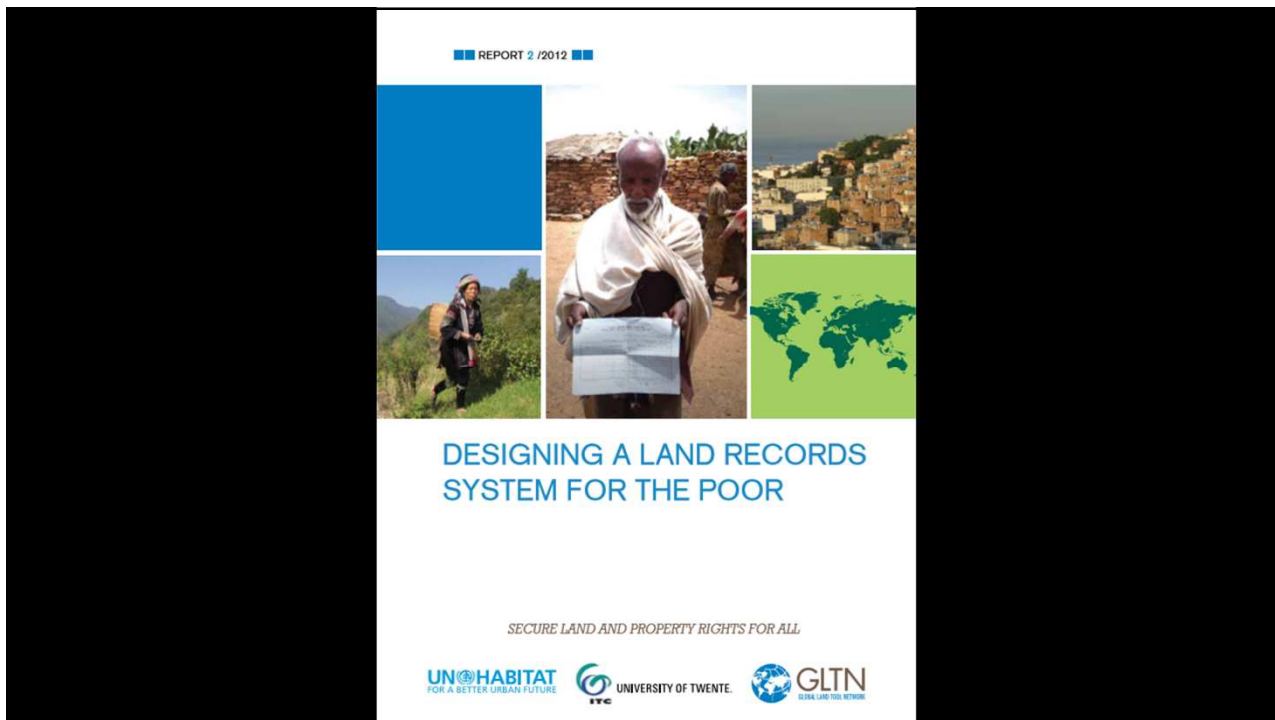


9

## STAKEHOLDERS IN CONVENTIONAL LAND ADMINISTRATION



# STAKEHOLDERS IN PRO POOR LAND RECORDATION



## PRO POOR LAND RECORDATION: SYSTEM REQUIREMENTS - AUGUSTINUS

- **Formal and informal tenure systems in one environment**
- **Representation in existing geodetic networks and in new spatial frameworks**
- **Different source data with different accuracies**
- **Participatory approach**
- **Gender**
- **Full and equal access to land information**
- **Different types of spatial units and identifiers**
- **Accommodate an overlap between different tenures on the Spatial Unit**
- **Linking all types of attributes and identifiers supported**

## Open Data Sources



Google earth

14



OpenStreetMap  
The Free Wiki World Map

# Point Cadastre



15

# Ethiopia





Ethiopia



Ethiopia



Ethiopia



Courtesy:  
Dr Zerfu Hailu

Ethiopia



Courtesy:  
Dr Zerfu Hailu

Rwanda



Rwanda



Rwanda



Rwanda



Rwanda



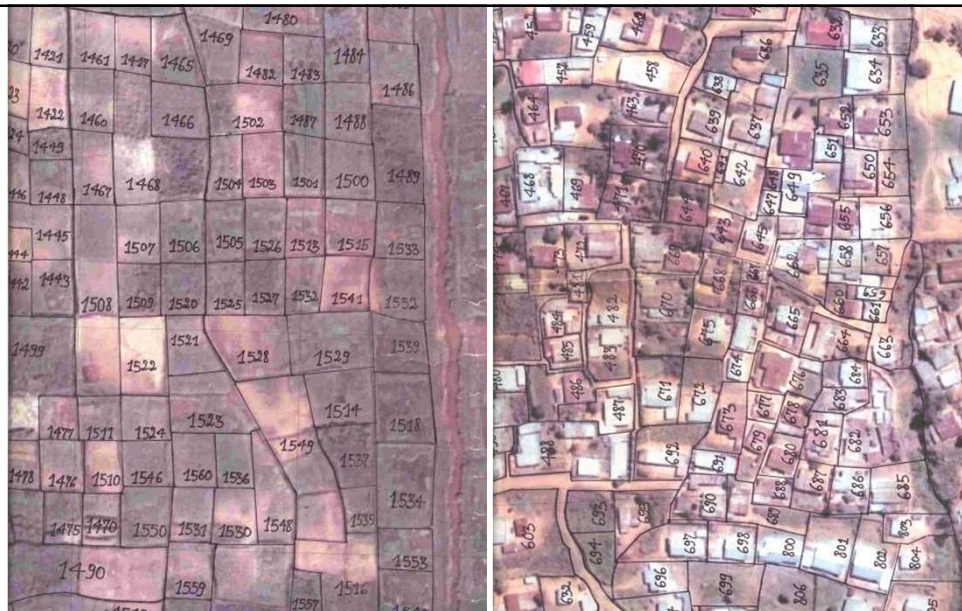
Rwanda



Rwanda



Rwanda







**REPUBLIC OF NAMIBIA**

**MINISTRY OF LANDS AND RESETTLEMENT**

Certificate No: **CCLB-000001**

Form 2

**CERTIFICATE OF REGISTRATION OF CUSTOMARY LAND RIGHT**  
As in the Communal Land Reform Act (Section 25, Regulation 5)

IT IS HEREBY CERTIFIED THAT

***Farming (Crop)***

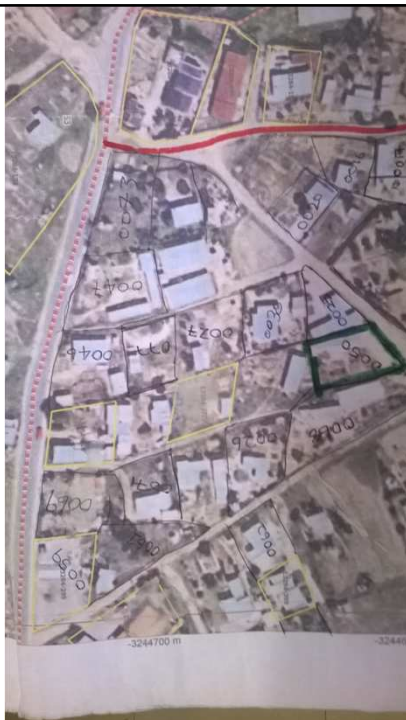
.....  
(description of customary land right which has been allocated as described on the back)

has been allocated to

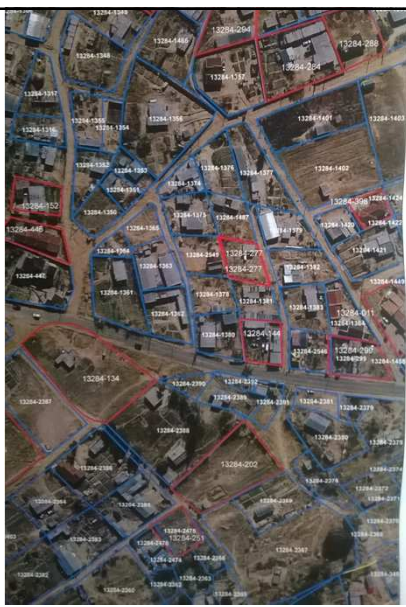




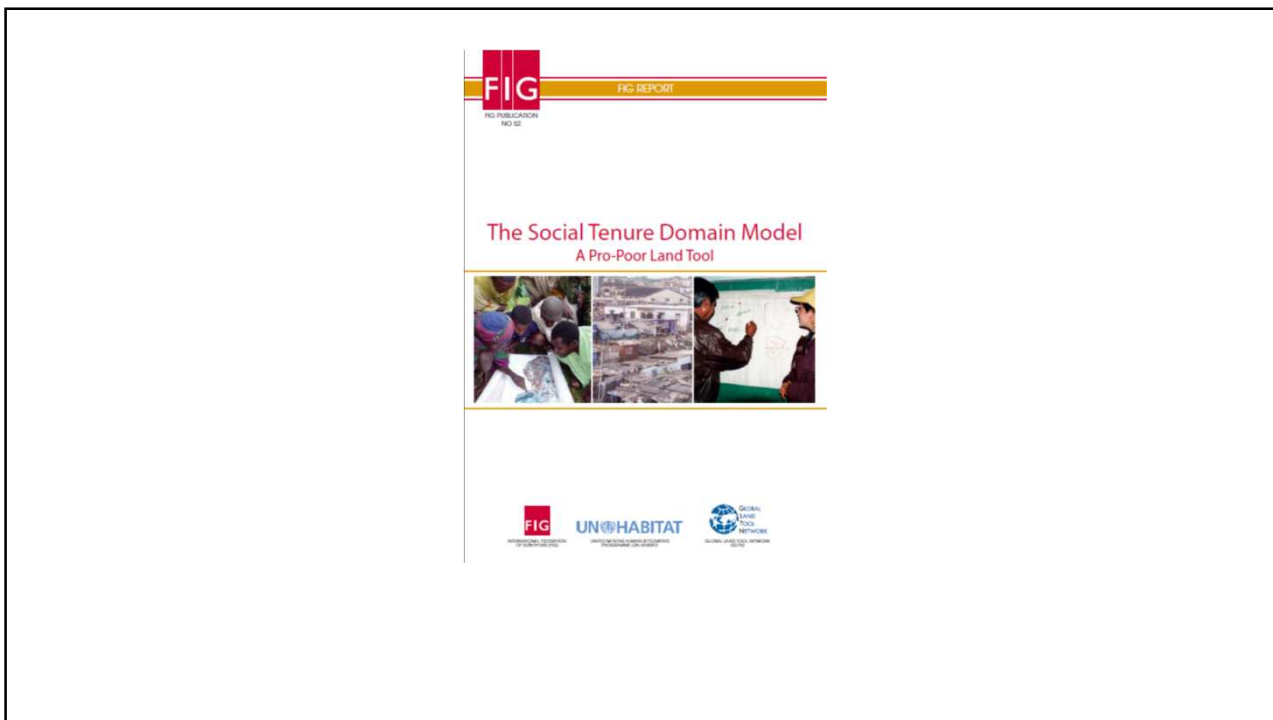
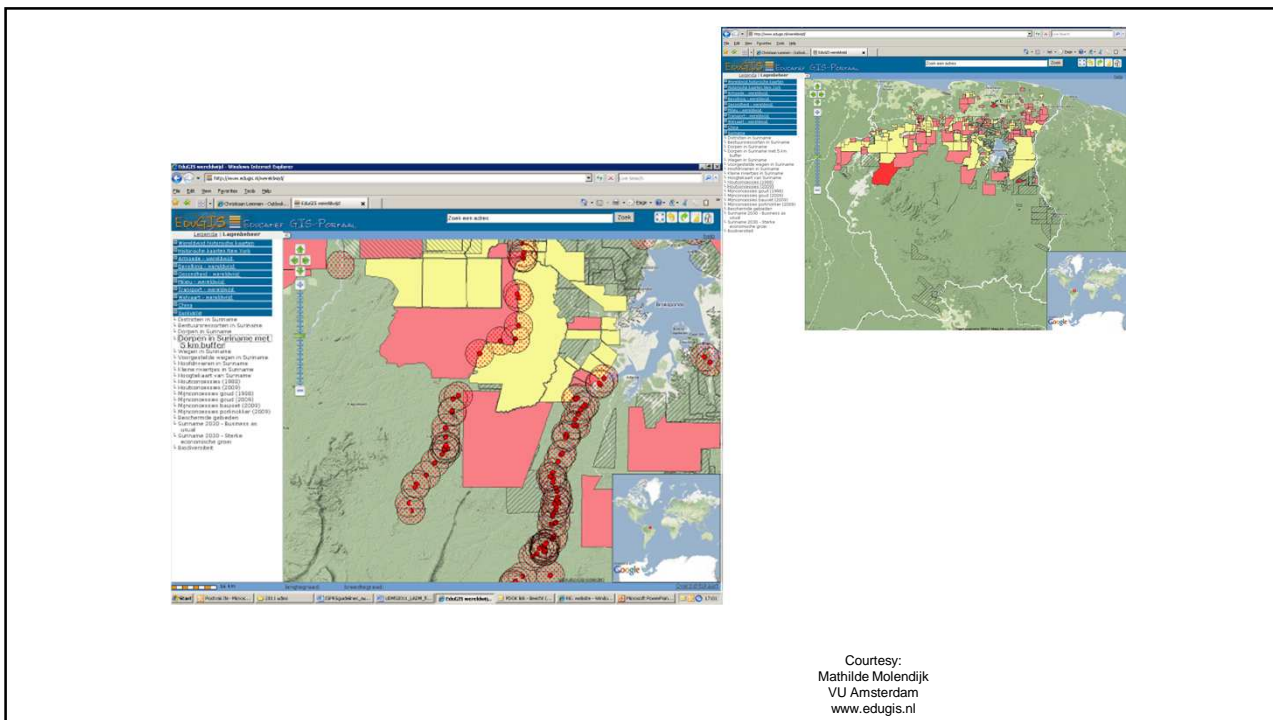
Lesotho



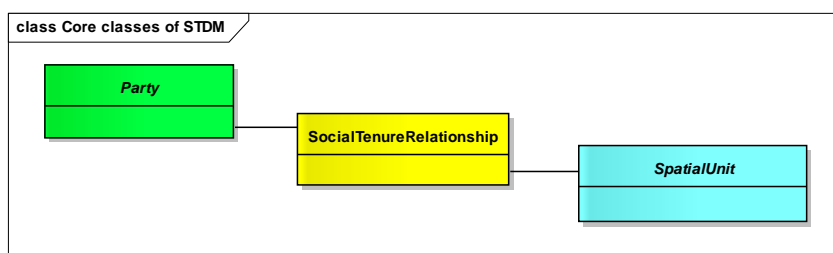
Courtesy:  
Peter Donker  
Co Meijer  
Lesotho Cadastre



Courtesy:  
Peter Donker  
Co Meijer  
Lesotho Cadastre



## Core Classes of STDM



## All People to Land Relationships

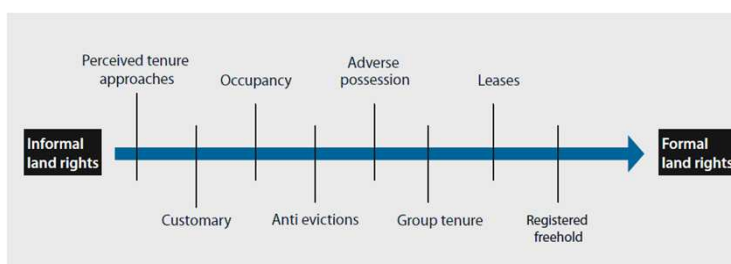
- Formal
- Informal
- Customary
- Indigenous
- Occupation
- Land use
- Religious
- Pastoralist
- Grazing, Fishing
- Marine
- Mining
- Forestry
- Road access
- Restrictions
- Responsibilities
- State, government
- Nature
- Water

## CONTINUUM....

- Parties
- Land Rights; Social Tenure Relations
- Credit Rights
- Spatial Units
- A range of data acquisition methods
- Recording systems
- Goals
- *And: Surveyors*

39

STDM supports the management of different tenures in one environment



 **FLOSS SOLA**  
Solutions for Open Land Administration

Already a member? [Login](#)

[Home](#) [About](#) [Downloads](#) [Community](#) [Resources](#) [My stuff](#)

**Solutions for Open Land Administration (SOLA) Project** is an open source software system that aims to make computerised cadastre and registration systems more affordable and more sustainable in developing countries.



SOLA Release 1402a is now available for [download](#).

[Follow @solafao](#)

**Latest notices**

- State Land Management Use Case Descriptions Updated  
3 Jun 2014

**Supporting Organisations**

 **FAO**  
FIAT PANIS

 **Governance of Tenure**

**Primary links**

- Home
- About
- About SOLA
- FAQ
- Supporting Organisations

# Thank you

- [www.gltn.net](http://www.gltn.net)
- [www.worldbank.org](http://www.worldbank.org)
- [www.fao.org](http://www.fao.org)
- [www.oicrf.org](http://www.oicrf.org)
- [www.fig.net](http://www.fig.net)
- [www.cadastraltemplate.org](http://www.cadastraltemplate.org)

