


"From the wisdom of the ages
to the challenges of modern world"



Testing the Sensitivity of Vegetation Indices for Crop Type Classification using RapidEye Imagery

Mustafa Ustuner & Fusun Balik Sanli
Yildiz Technical University
Turkey

FIG WORKING WEEK 2015

17-21 MAY SOFIA BULGARIA

Organised by:   CHAMBER OF GRADUATED SURVEYORS

Platinum Sponsors:  



"From the wisdom of the ages
to the challenges of modern world"

FIG WORKING WEEK 2015

17-21 MAY SOFIA BULGARIA

About me

- From Istanbul, Turkey
- BSc & MSc degree in Geomatic Engineering
- Currently pursuing PhD in Remote Sensing
- Member of RSPSoc and ISPRS
- Working as a research assistant in Geomatic Engineering in YTU







Platinum Sponsors:   CHAMBER OF GRADUATED SURVEYORS

Platinum Sponsors:  

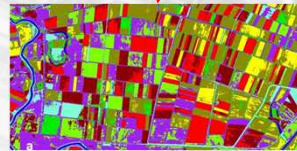
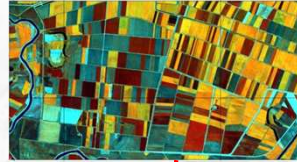


"From the wisdom of the ages
to the challenges of modern world"

FIG WORKING WEEK 2015
17-21 MAY SOFIA BULGARIA

OUTLINE

- Introduction
- Objectives
- Study area
- Data (RapidEye Imagery)
- Vegetation Indices
- Image Classification
- Results&Conslusion



Platinum Sponsors:



"From the wisdom of the ages
to the challenges of modern world"

FIG WORKING WEEK 2015
17-21 MAY SOFIA BULGARIA

INTRODUCTION

REMOTE SENSING AND AGRICULTURE

- increasing necessity of the food
- high population growth
- global climate change

Sustainable management of
agricultural resources



Economy!



Platinum Sponsors:





"From the wisdom of the ages to the challenges of modern world"

FIG WORKING WEEK 2015
17-21 MAY SOFIA BULGARIA

INTRODUCTION

REMOTE SENSING AND AGRICULTURE

- ✓ Crop pattern identification
- ✓ Crop yield estimation
- ✓ Precision Agriculture
- ✓ Monitoring crop status

✓ Adaptation to Common Agricultural Policy (CAP)

✓ Sustainable agriculture

✓ Accurate and appropriate planning



Platinum Sponsors:



"From the wisdom of the ages to the challenges of modern world"

FIG WORKING WEEK 2015
17-21 MAY SOFIA BULGARIA

Objective

IMAGE CLASSIFICATION

INFORMATION FROM IMAGES

Which is the best?

- Maximum Likelihood,
- Support Vector Machines and many more.....

Accurate Information?

Vegetation Indices

❖ Appropriate band selection

❖ Training/testing data

❖ Classification Methods

❖ Resolution

❖ Ancillary Data



Platinum Sponsors:





"From the wisdom of the ages
to the challenges of modern world"

FIG WORKING WEEK 2015
17-21 MAY SOFIA BULGARIA

Image Classification
Accuracy

+

Vegetation Indices

=

Classification
Accuracy ?



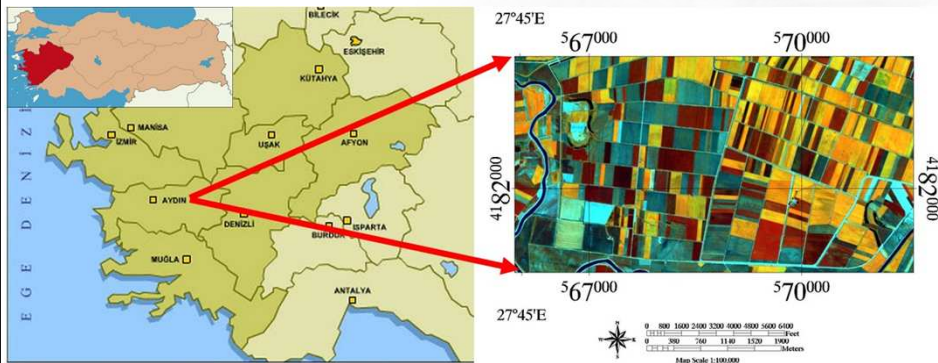
Platinum Sponsors:



"From the wisdom of the ages
to the challenges of modern world"

FIG WORKING WEEK 2015
17-21 MAY SOFIA BULGARIA

STUDY AREA



✓ Intensive crop farming (Modern Agriculture)



Platinum Sponsors:





"From the wisdom of the ages to the challenges of modern world"

FIG WORKING WEEK 2015
17-21 MAY SOFIA BULGARIA

Data (Satellite Imagery)

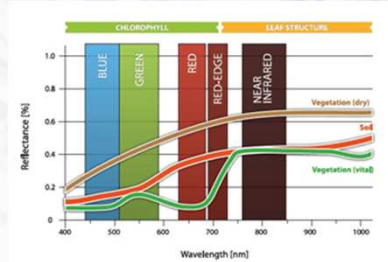
RapidEye Imagery

- 5m spatial resolution
- Orthoimage (Level 3A)



Prior (Common) Application Areas

- ✓ Agriculture
- ✓ Vegetation
- ✓ Forestry



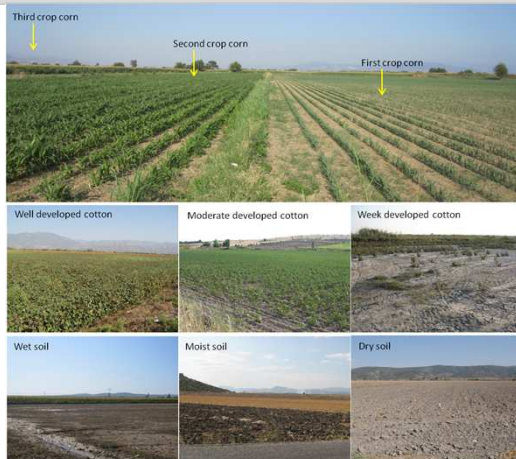
Platinum Sponsors:



"From the wisdom of the ages to the challenges of modern world"

FIG WORKING WEEK 2015
17-21 MAY SOFIA BULGARIA

Crop types



Platinum Sponsors:





"From the wisdom of the ages
to the challenges of modern world"

FIG WORKING WEEK 2015
17-21 MAY SOFIA BULGARIA

Vegetation Indices

Vegetation Index	Equation
NDVI	$NDVI = (R_{band5} - R_{band3}) / (R_{band5} + R_{band3})$
GNDVI	$GNDVI = (R_{band5} - R_{band2}) / (R_{band5} + R_{band2})$
NDRE	$NDRE = (R_{band5} - R_{band4}) / (R_{band5} + R_{band4})$

- Normalized Difference Vegetation Index (NDVI)
- Green Normalized Difference Vegetation Index (GNDVI)
- Normalized Difference Red Edge Index (NDRE)

The band numbers of 2,3,4,5 refer to green (520 – 590nm), red (630 – 685nm), rededge (690 – 730nm) and near-infrared (760 – 850nm), respectively



"From the wisdom of the ages
to the challenges of modern world"

FIG WORKING WEEK 2015
17-21 MAY SOFIA BULGARIA

Image Classification

- Maximum Likelihood and
- Support Vector Machines



ROI Name	Color	Pixels
1st_crop_corn	Red3	363
2nd_crop_corn	Red	558
well_cotton	Yellow	391
moderate_cotton	Yellow3	462
week_cotton	Green1	348
wet soil	Purple	319
moist soil	Aquamarine	355
dry soil	Chartreuse	627
water surface	Blue	218

Training Data



In-situ data collection



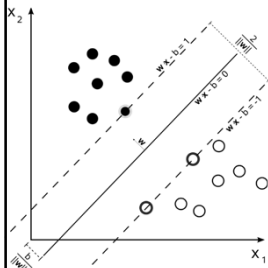


"From the wisdom of the ages to the challenges of modern world"

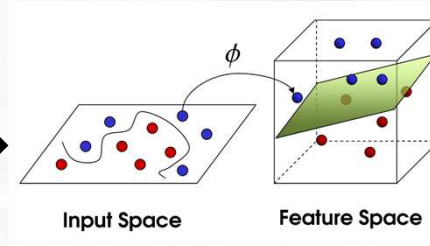
FIG WORKING WEEK 2015
17-21 MAY SOFIA BULGARIA

Image Classification

Support Vector Machines



http://en.wikipedia.org/wiki/Support_vector_machine



$$K(x_i, x_j) = \phi(x_i) \cdot \phi(x_j)$$

Radial Basis Function Kernel
(C, γ) = (100, 0.125)
Optimum Parameters

KERNEL FUNCTION



"From the wisdom of the ages to the challenges of modern world"

FIG WORKING WEEK 2015
17-21 MAY SOFIA BULGARIA

Accuracy Assessment

Analysis	Overall Accuracy (%)	Kappa coefficient
MLC_5 (5 spectral band)	80,21	0,77
MLC_8 (5 band+ 3 vegetation indices)	73,38	0,70
SVM_5 (5 spectral band)	83,96	0,82
SVM_8 (5 band+ 3 vegetation indices)	86,01	0,84





"From the wisdom of the ages
to the challenges of modern world"

FIG WORKING WEEK 2015
17-21 MAY SOFIA BULGARIA

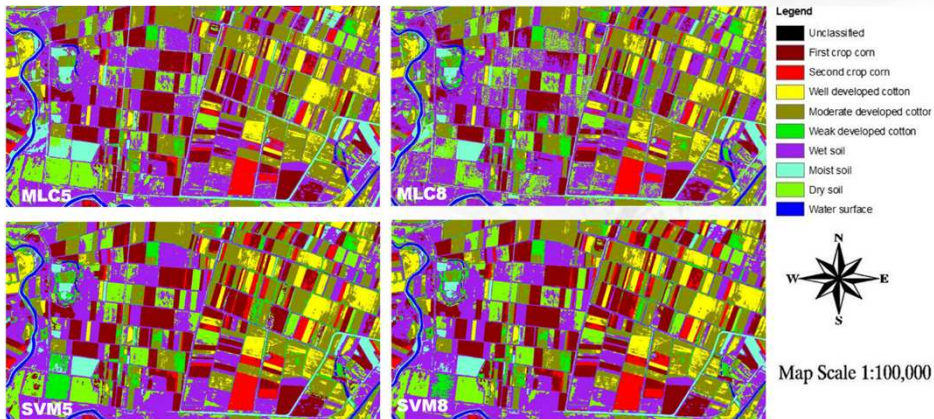
Accuracy Assessment



"From the wisdom of the ages
to the challenges of modern world"

FIG WORKING WEEK 2015
17-21 MAY SOFIA BULGARIA

Classified Images





"From the wisdom of the ages
to the challenges of modern world"

FIG WORKING WEEK 2015
17-21 MAY SOFIA BULGARIA

Conclusions

- ✓ RapidEye imagery for crop classification and satisfactory results
- ✓ Efficient use of SVM for crop classification
- ✓ vegetation indices(VIs) have different sensitivity on classification methods
- ✓ SVM increase , MLC decrease.....when VIs added



Platinum Sponsors:



"From the wisdom of the ages
to the challenges of modern world"

FIG WORKING WEEK 2015
17-21 MAY SOFIA BULGARIA

Acknowledgements

The authors would like to thank Prof.Dr Yusuf Kurucu and Dr. Ing.M. Tolga Esetlili
Department of Soil Science and Plant Nutrition in Ege University

for the data providing as well as their assistance in the analysis and interpretation the crop
types for the study area



Platinum Sponsors:





"From the wisdom of the ages
to the challenges of modern world"

FIG WORKING WEEK 2015
17-21 MAY SOFIA BULGARIA

Invitation



Platinum Sponsors:



"From the wisdom of the ages
to the challenges of modern world"

FIG WORKING WEEK 2015
17-21 MAY SOFIA BULGARIA

Thank you for your attention !

ResearchGate



Mustafa Üstüner Yıldız Technical University
Remote Sensing, Geoinformatics (GIS), Cartography
PhD student 43.43

OVERVIEW | CONTRIBUTIONS | INFO | STATS



Mustafa Üstüner 500+ connections
Research/Teaching Assistant
Istanbul, Turkey | Research

Current: Yıldız Technical University
Previous: University of South Florida, ESE - European School of English
Education: Yıldız Technical University
Recommendations: 2 people have recommended Mustafa

Contact
mustuner@yildiz.edu.tr



Platinum Sponsors:





"From the wisdom of the ages
to the challenges of modern world"

FIG WORKING WEEK 2015
17-21 MAY SOFIA BULGARIA



Questions & Answers



Platinum Sponsors:

