

*kadaster*

**Presented at the FIG Working Week 2016,  
May 2-6, 2016 in Christchurch, New Zealand**

# Distribution and intensity of agricultural traffic

Marije Louwsma, Annet Hospers,  
Ron van Lammeren, Paul Peter Kuiper,  
Christchurch, 5 May 2016

# Shared space - Agricultural traffic

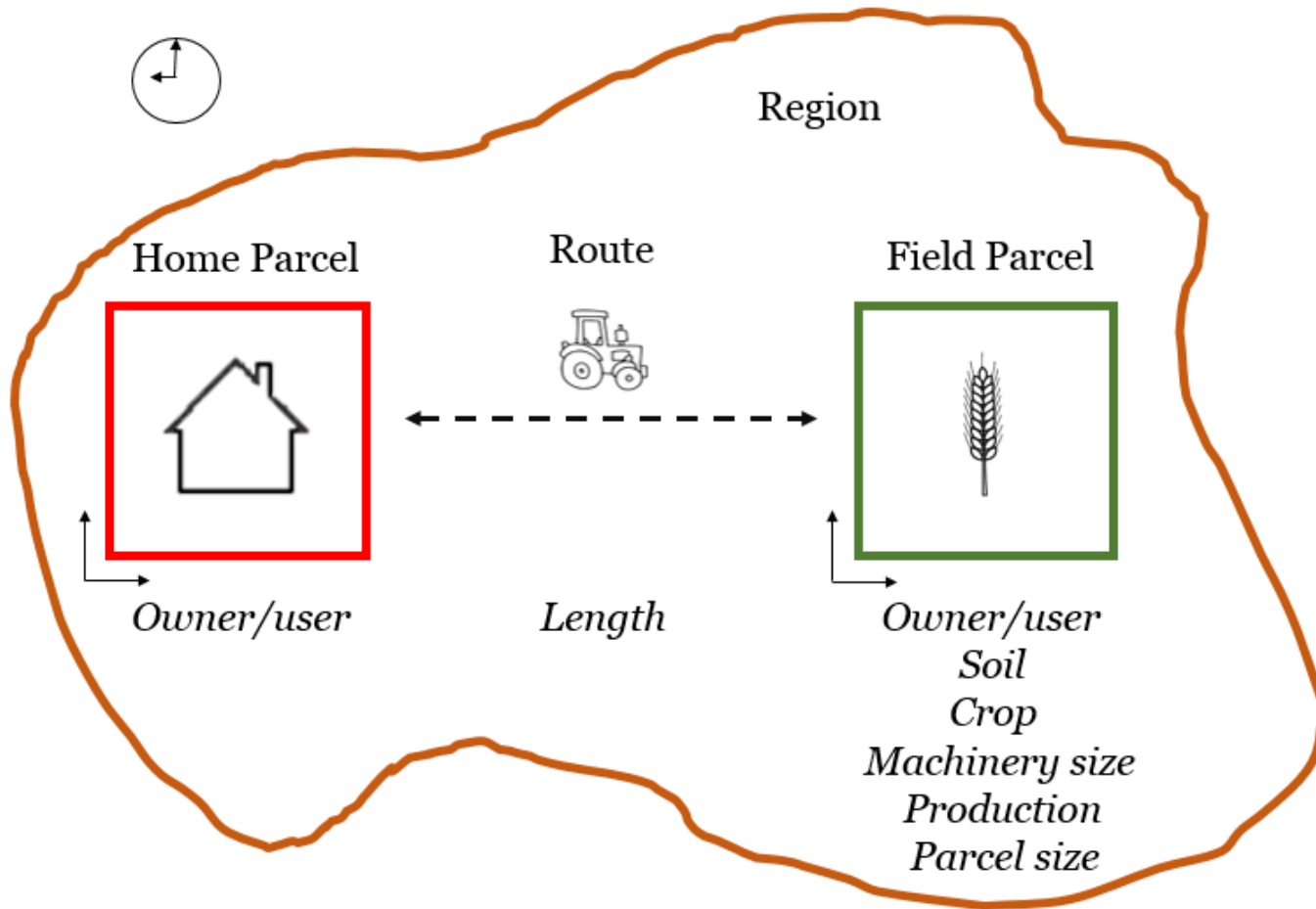


# Followed methodology

- Aim: to develop a **GIS model** that shows the spatial distribution and intensity of agricultural for a specific **area** and for a specific **season**
- Why:
  - To locate potentially unsafe locations
  - To manage road usage (separate different modes)
  - To take measures to reduce traffic intensity



# Concept

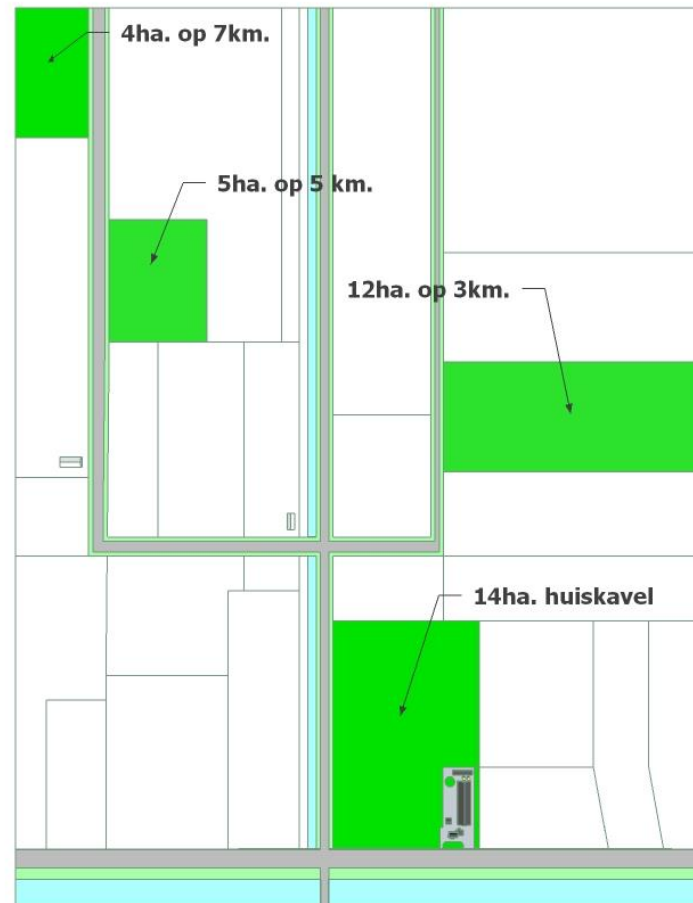


# Modelling in three steps

- Calculating routes from homestead to distant parcels
- Calculating traffic intensity (# rides) over that routes
- Calculating and mapping of all rides for each route segment
  
- Applied for:
  - land owners and land users
  - four seasons (winter, spring, summer, autumn)

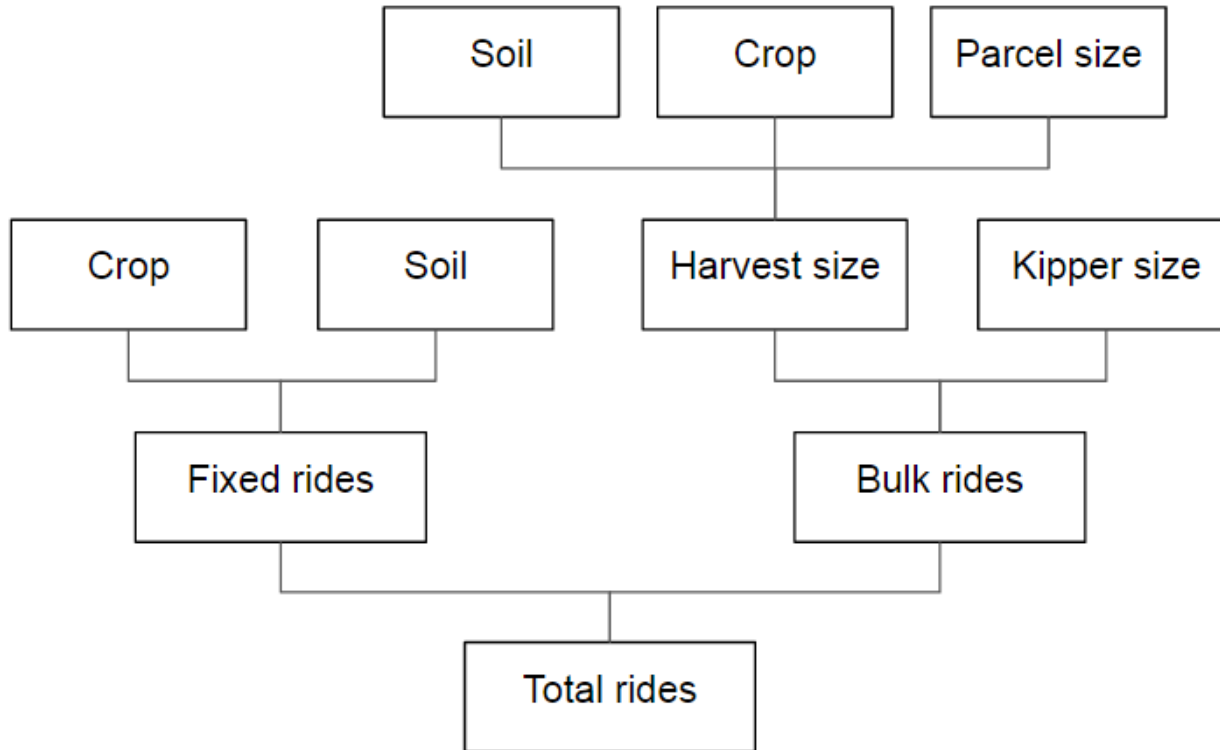
# Route factors

- Spatial distribution of land:
  - Location of distant parcels relative to homestead
  - Access point to parcel
- Road network

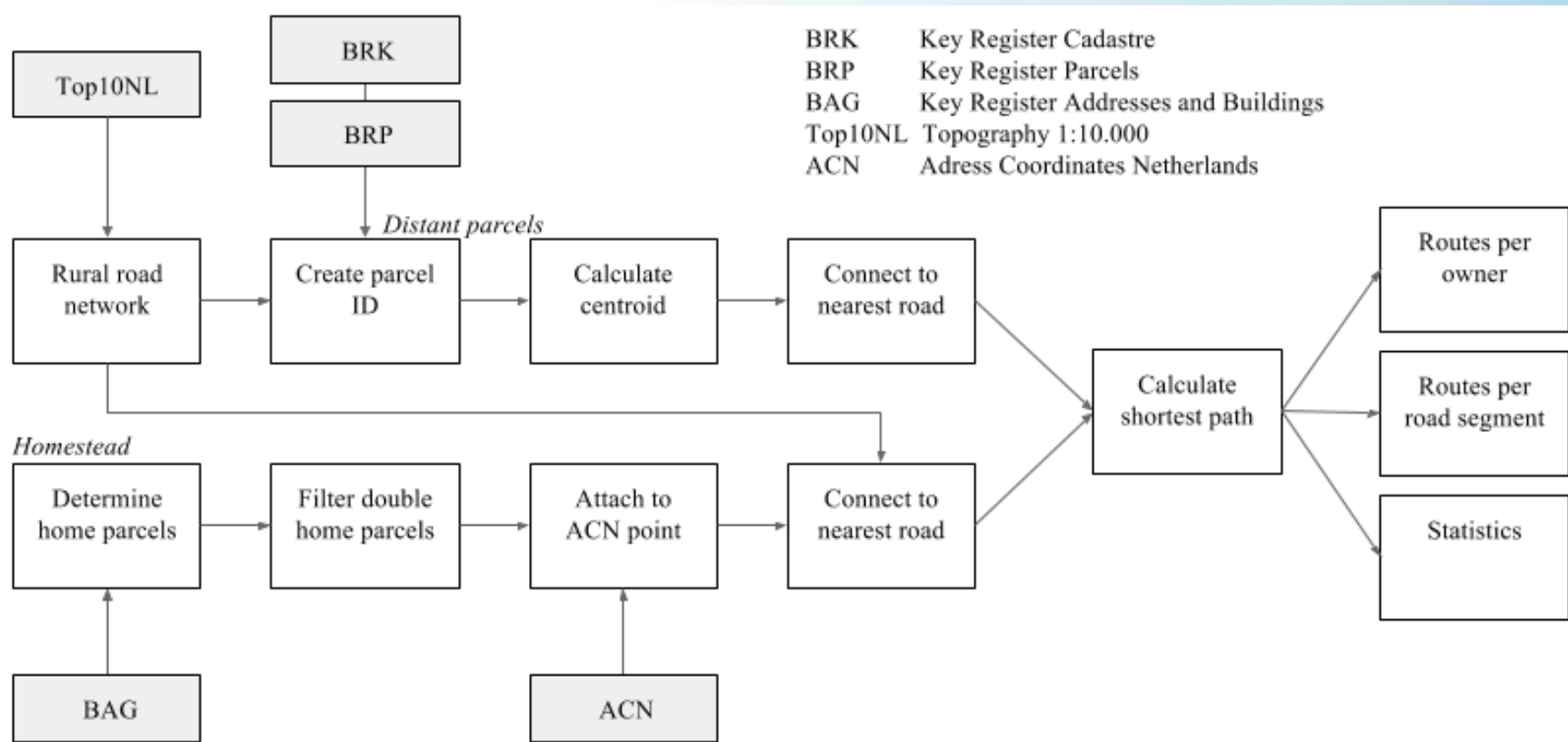




# Traffic intensity factors

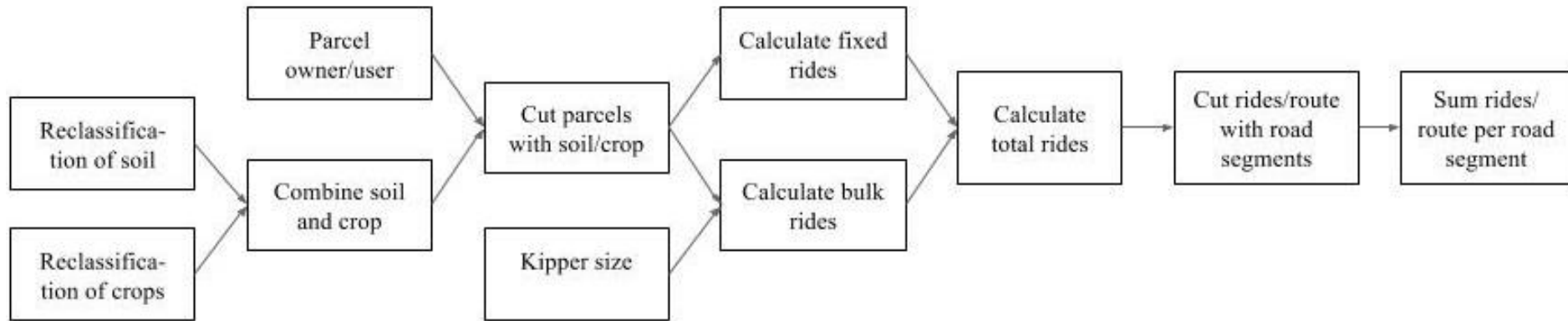


# Calculation of routes

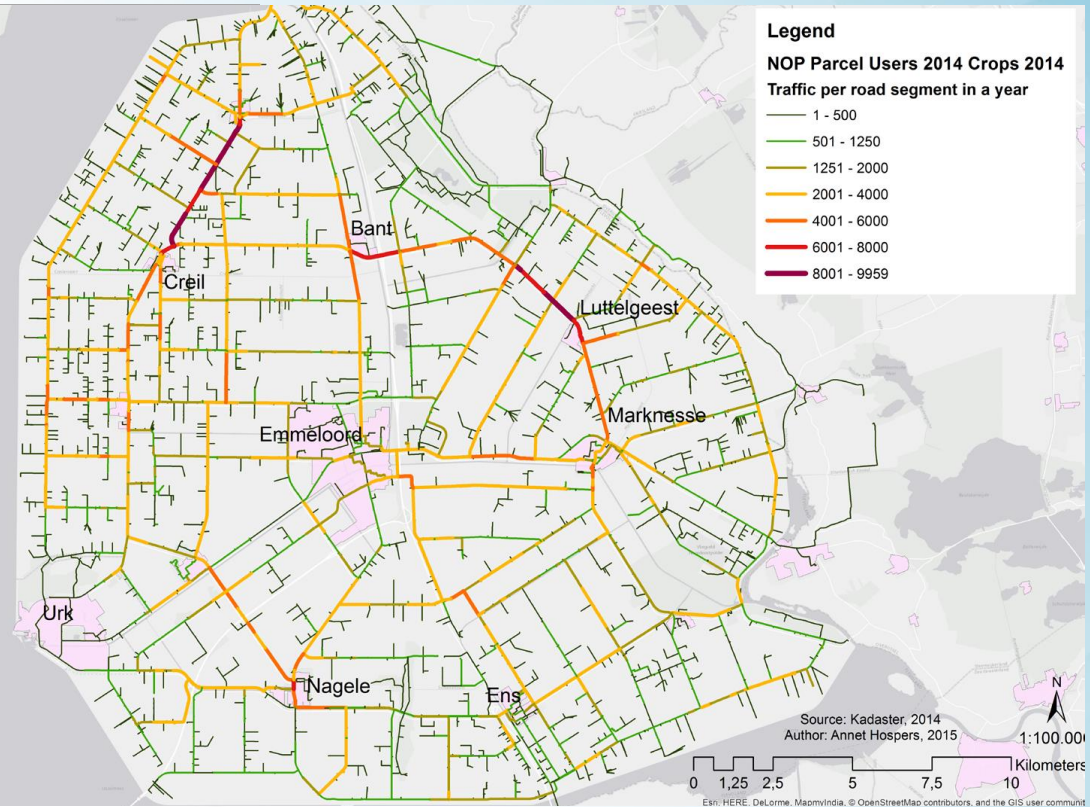
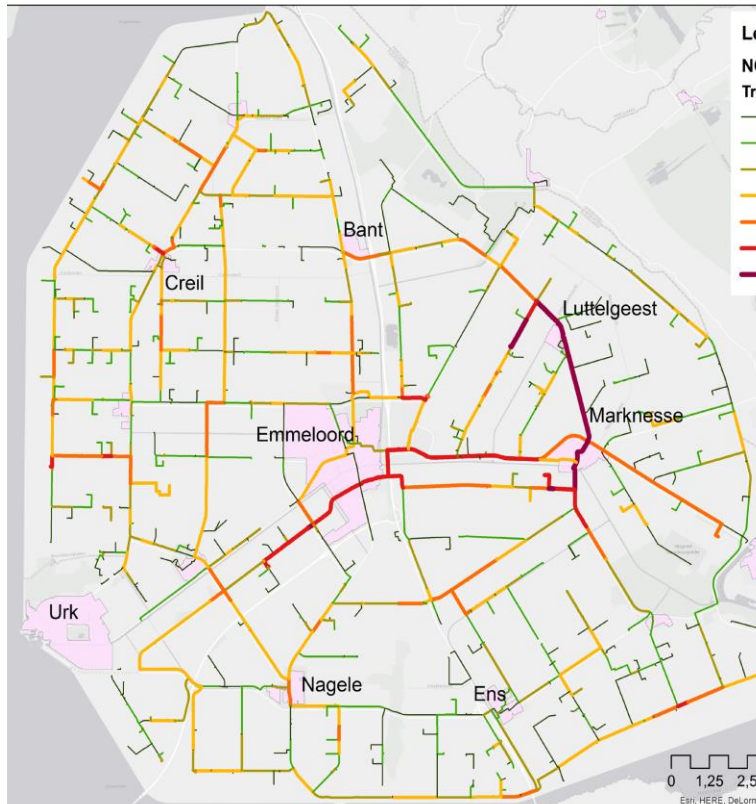




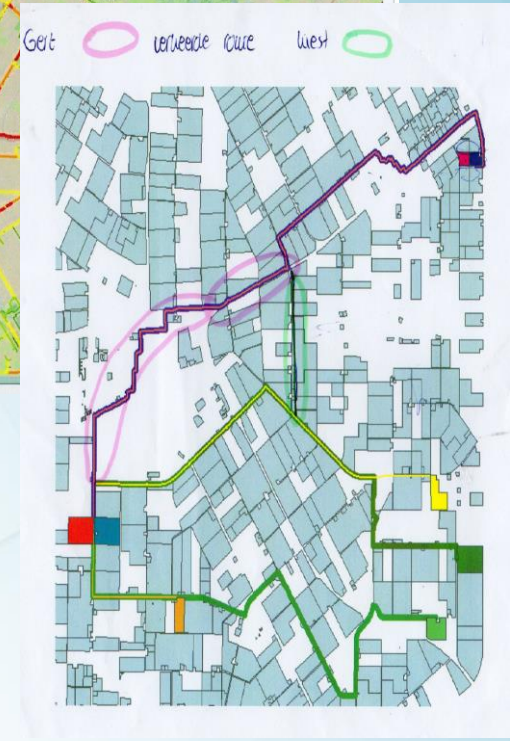
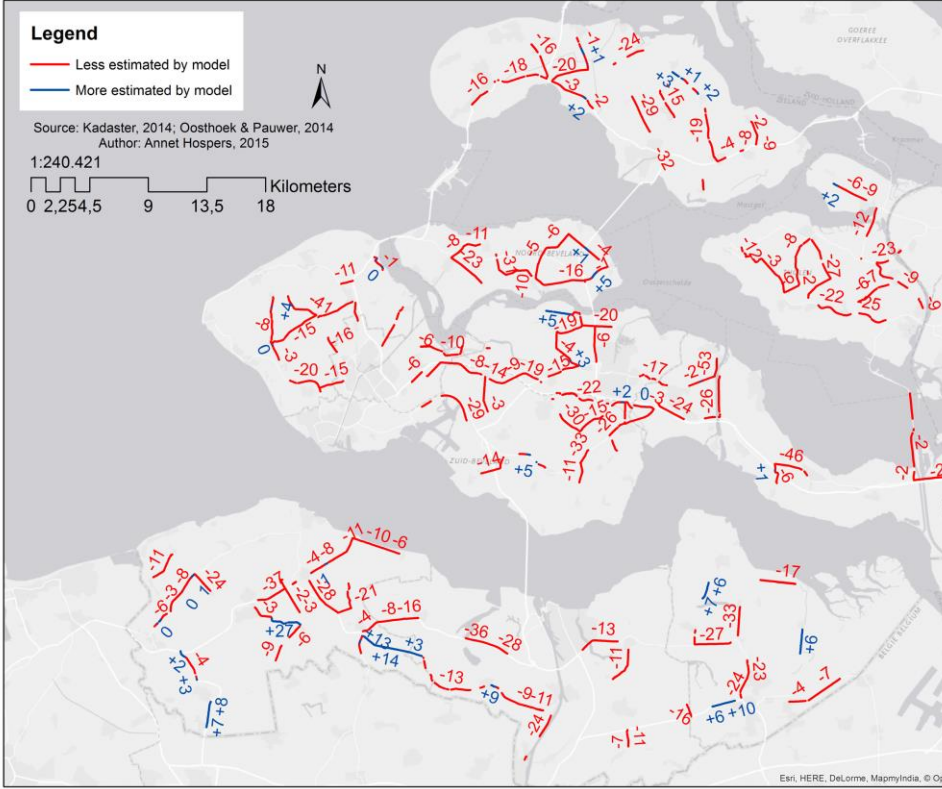
# Calculation of traffic intensity



# Traffic intensity Noordoostpolder



# Validation



# Discussion

- Limitations model:
  - Results are more complete with combination of information on land owner and land user
  - However, data on land users not always available
  - Mapped traffic distorted at boundaries area
  - Does not include all agricultural traffic, e.g. from employed contractors



# Conclusions

- Model is useful for quickly gaining information on spatial distribution and intensity of agricultural traffic in the area
- Other applications might be possible as well, e.g. for analyses of CO<sub>2</sub> emissions or traffic safety.



FIG WORKING WEEK 2020



## Holland is cool

- ✓ Venue: 10 minutes airport, city centre, polders & tulips
- ✓ Schiphol Airport: over 300 direct destinations
- ✓ Fee: 550 Euro
- ✓ “Smart surveyors for land and water management”