



# XXVI FIG CONGRESS

8-11 May 2018, İstanbul

## Analysis of the Multipurpose Cadastre use for Risk and Disaster Management in Colombia

Sandra RODRÍGUEZ, Daniel PÁEZ, Ricardo CAMACHO, Colombia

EMBRACING OUR SMART WORLD WHERE THE CONTINENTS CONNECT:  
ENHANCING THE GEOSPATIAL MATURITY OF SOCIETIES

Organized by



Main Supporters



Platinum Sponsors



# WHERE WE ARE TODAY

## Current cadastral management model

There is an inadequate institutional architecture that makes difficult the management of current cadastre (institutional dimension)

Appraisals do not reflect reasonable value of land (economic dimension)

Mainly fiscal

No multipurpose processes and methodologies

Outdated

Disarticulation between cadaster and property registration

The cadastre is inaccurate (physical dimension)

Fully public provision model: it concentrates standards, execution and control

Organized by



Main Supporters



Platinum Sponsors





In Colombia 66.5%  
of the municipalities  
are outdated

urban areas

64.9% outdated

35.1% updated

rural areas

59.2% outdated

40.8% updated



Organized by



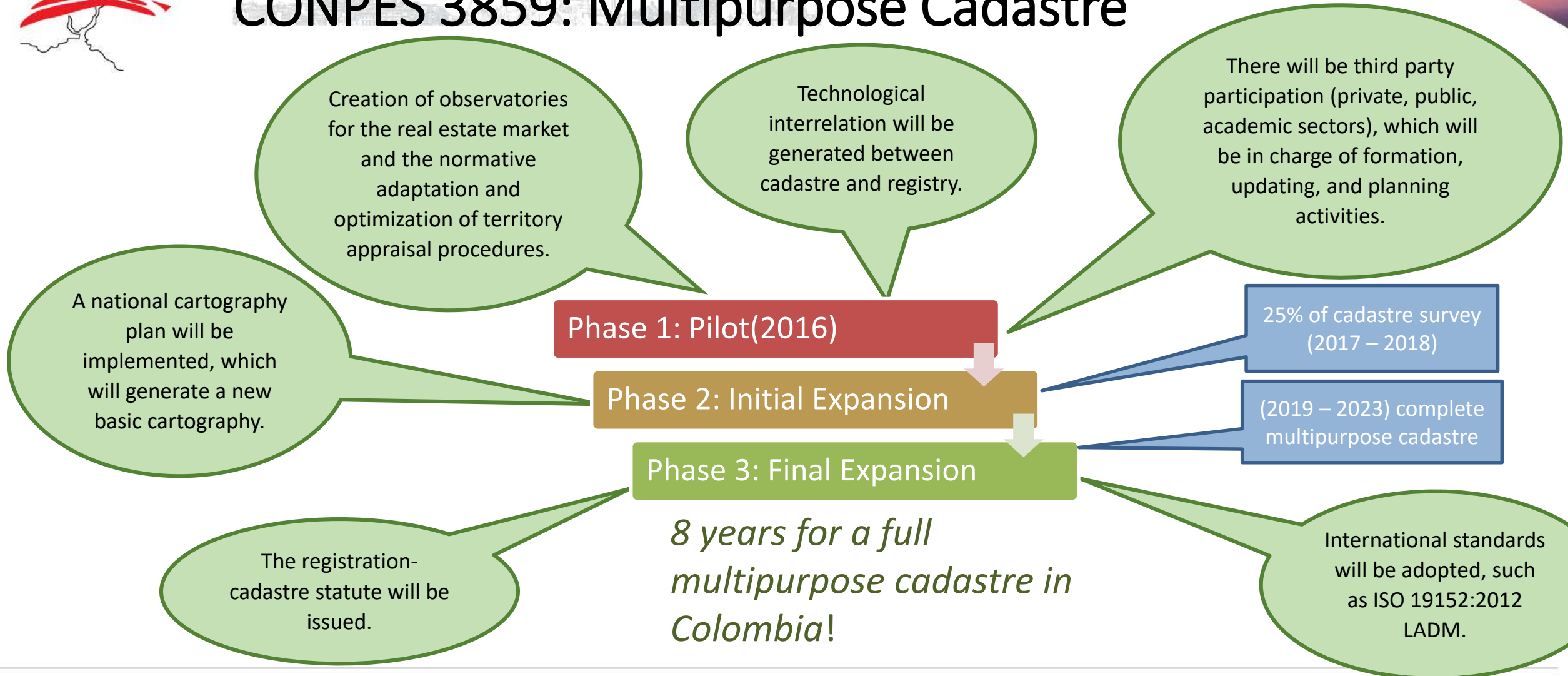
Main Supporters



Platinum Sponsors



# CONPES 3859: Multipurpose Cadastre



Organized by



Main Supporters

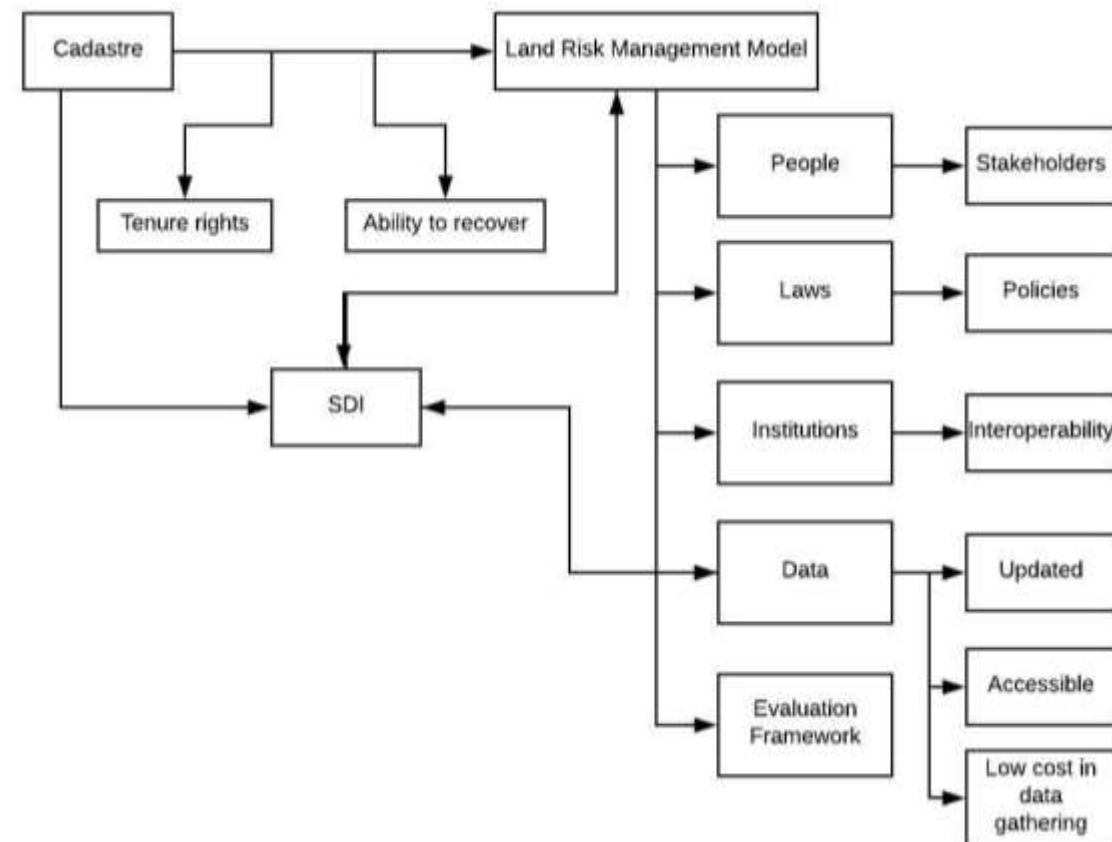
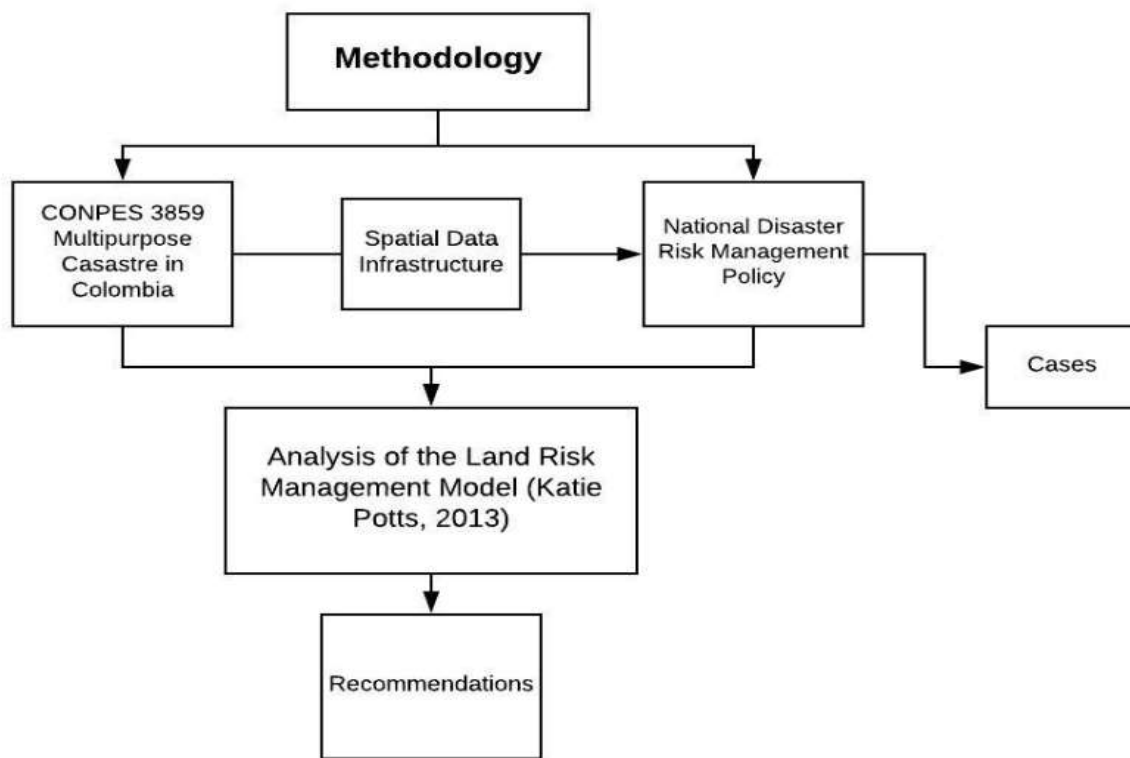


Platinum Sponsors





# METHODOLOGY



Organized by



Main Supporters



Platinum Sponsors



# METHODOLOGY

The multipurpose cadastre is a fundamental tool to integrate the land administration with the risk management



Organized by



Main Supporters

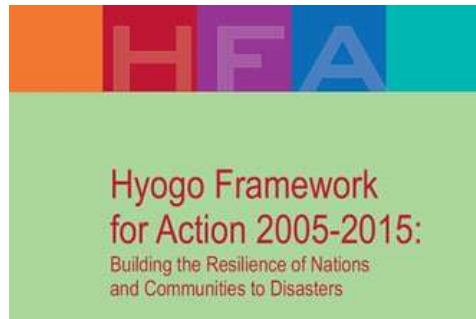


Platinum Sponsors



# Global efforts to reduce disaster losses

- Hyogo Framework for Action 2005 – 2015



*“The substantial reduction of disaster losses, in lives and in the social and economic assets of communities and countries”*

- Sendai Framework for Disaster Risk Reduction 2015 – 2030



*“The substantial reduction of disaster risk and losses in lives, livelihoods and health and in the economic, physical, social, cultural and environmental assets of persons, business, communities and countries”*

Organized by



Main Supporters



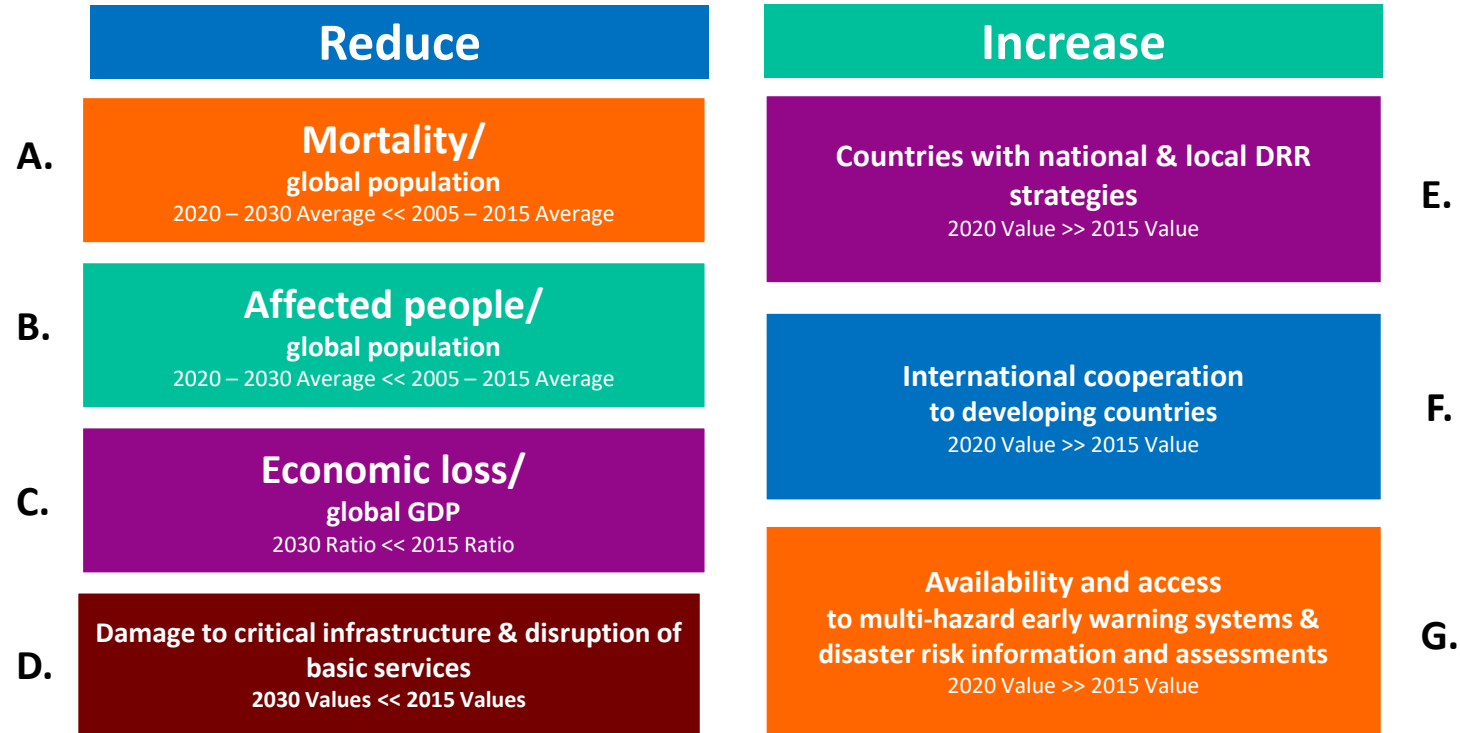
Platinum Sponsors





2020 – 2030 v. 2005 – 2015

## 7 Global Targets



Organized by



Main Supporters



Platinum Sponsors









EMBRACING OUR SMART WORLD WHERE THE CONTINENTS CONNECT:  
**ENHANCING THE GEOSPATIAL MATURITY OF SOCIETIES**

6-11 May 2018, İstanbul

# CASE STUDY: MOCOIA



Organized by



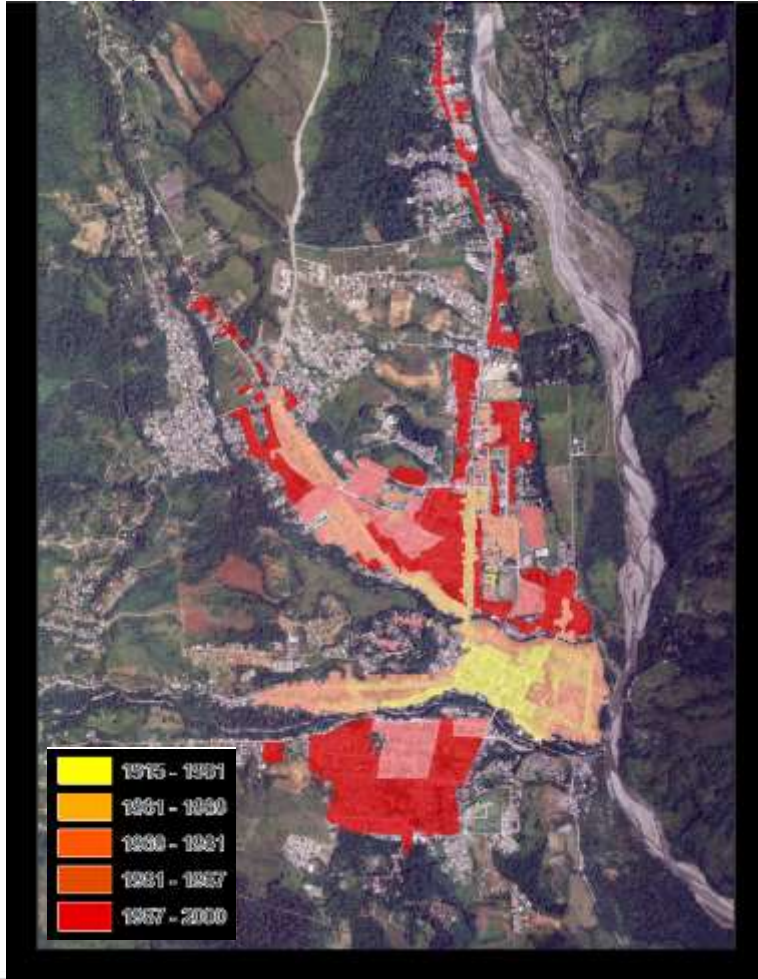
Main Supporters



Platinum Sponsors



# CASE STUDY: MOCOA



Organized by



Main Supporters



Platinum Sponsors



# CONCLUSIONS / RECOMMENDATIONS

- The multipurpose cadastre should be a basic input for the development of disaster risk management policies.
- It is from the cadastre that the necessary characteristics are identified to determine the different types of risk to which a community is exposed.
- After the implementation of such policies, building capacity of interoperability amongst different entities is a must for governments.

Organized by



Main Supporters



Platinum Sponsors





EMBRACING OUR SMART WORLD WHERE THE CONTINENTS CONNECT:  
**ENHANCING THE GEOSPATIAL MATURITY OF SOCIETIES**  
6-11 May 2018, Istanbul

# Thank you

Organized by



Main Supporters



Platinum Sponsors

