

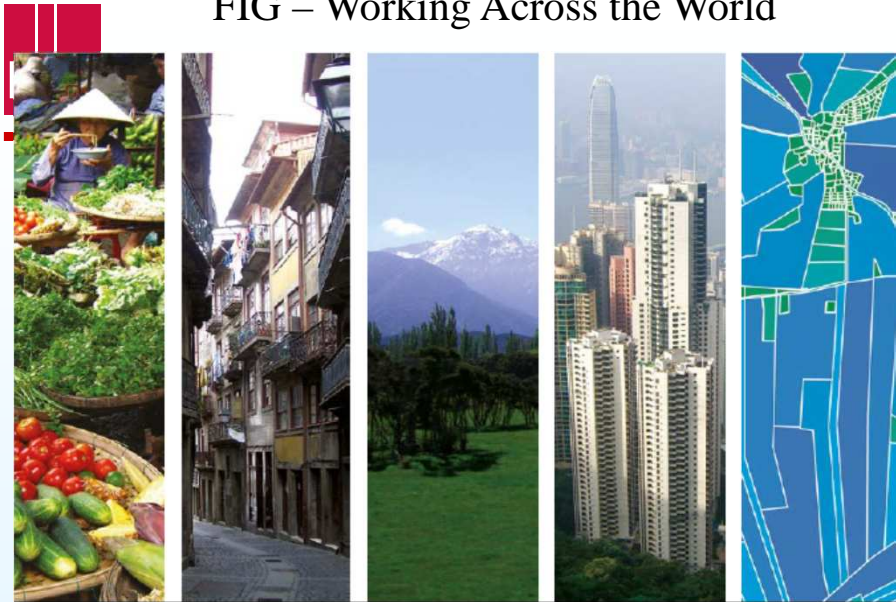


International Federation of Surveyors
Fédération Internationale des Géomètres
International Vereinigung der Vermessungsingenieure

Welcome to a brief presentation of:

FIG -International Federation of Surveyors

FIG – Working Across the World





The Role of FIG

- Professional Development;
 - Global forum for discussion;
- Institutional Development;
 - Building capacity;
 - Institutional support – ethics, codes of conduct;
- Global Development;
 - Global Agenda;
 - Co-operation with sister organisations.



Commissions

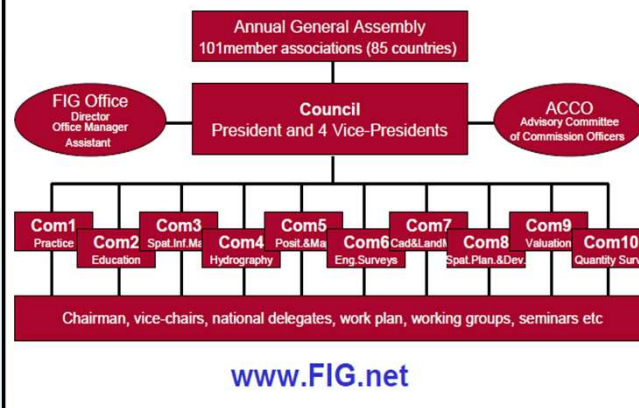
- Com 1 – Standards and Professional Practice;
- Com 2 – Professional Education;
- Com 3 – Spatial Information Management;
- Com 4 – Hydrography;
- Com 5 – Positioning and Measurement;
- Com 6 - Engineering Surveys;
- Com 7 – Cadastre and Land Management;
- Com 8 – Spatial Planning;
- Com 9 – Valuation & Real Estate Management;
- Com 10 – Construction & Economics Management.



Commission Chairs



Organizational Structure





Commission 8

Spatial Planning and Development

- Working Group 8.1:
- Working Group 8.2:
- Working Group 8.3:
- Working Group 8.4



Terms of Reference

- Regional and local structure planning
- Urban and rural land use planning and control
- Planning policies & environmental improvement
- Land use planning & implementation & control
- Public-private partnerships
- Informal settlement issues in spatial development,



Terms of Reference Cont.

- Spatial planning and good governance
- Re-engineering mega cities
- Strategy for environmentally sustainable development
- Disaster risk management & land use planning
- Inter-relationship between Commissions



Mission

Activities involve all levels of physical planning, which enable environmentally sustainable development to occur.



Commission Personnel

Chair:

Wafula Nabutola, M.Sc.

Email: wafulaluasinabutola@gmail.com

Vice Chair of Administration and Communication

Ms. Mercy Muthoni Njamwea

Email: mercym.desire@gmail.com



WG 8.1 Planning Strategy for Urban Development and Regeneration

- Planning urban development and renewal and their economic and social impacts
- The role of partnerships and urbanization process is a role for surveyors in moving towards sustainability in urban development/community living for people and places.

Chair: Frank Friesecke, Germany,
e-mail: frank.friesecke@steg.de



WG 8.2 Informal settlements issues in spatial development planning and governance

- Improvement of policies, laws etc. to attain Millennium Development Goals;
- Initiatives that deliver land for housing and associated financial mechanisms;
- Upgrading of settlements through participatory approaches to planning and development.
- Chair Eugene Silayo, Tanzania,
e-mail silayo@aru.ac.tz



WG 8.3 Re-engineering of Mega Cities

- To provide opportunities for surveyors to play a key role in solving problems and implementing infrastructure in environmentally sustainable projects/developments in mega cities
- Chair Enrico Rispoli, Italy,
email: e.rispoli@cng.it



WG 8.4 Land Policies; Land Use Planning Control and Implementation

- contribution to formulation and implementation of land policies in the world in general and in Africa in particular; land use planning and better integrate surveyors expertise in implementation of these policies, plans, implementation processes and agreements and real estate management



WG 8.4 Contd,

- to increase surveyors' and planners' awareness on sustainable planning and implementation of plans based on modern knowledge, technical solutions, rules and legislation, traditions, equity and development and implementation processes in different countries.

Chair: Ibrahim Mwathane, Kenya,
email: mwathane@landscs.co.ke



African Task Force

- focus on the African Surveying Profession & how it can best contribute to meet the key challenges of poverty alleviation, economic growth, and environmental sustainability.
- to enable the surveying profession in Sub Saharan Africa deal with social responsibility in terms of contributing to achieving the MDGs. new and creative tools to revitalise and strengthen members within Sub Saharan Africa.



Africa Task Force

Chair:

Dr. **Diane Dumashie**

E-mail: atfchair_p@ymail.com



Regular Opportunities to share and grow industry knowledge and connections



**8th FIG Regional Conference,
26-29 November 2012 Montevideo, Uruguay**



Environment for Sustainability

Abuja, Nigeria, International Conference Centre 6–10 May 2013



Commission 8 welcomes:

- Further debate;
- Members to get involved;
- Members to contribute where and when they can; and
- Thank you.